



Holborn Close, NW7

£39,000 Per calendar month

Introducing a stunning chapel conversion that seamlessly marries history with modern luxury. This extraordinary residence offers a unique blend of architectural grandeur and contemporary design. Featuring an elegant and open living space, this chapel conversion boasts an abundance of natural light, accentuating its original charm.

The property comprises four bedrooms and four bathrooms, providing a perfect balance of comfort and style. The meticulous attention to detail is evident in every corner, from the soaring ceilings adorned with original features to the bespoke fixtures that enhance the overall ambience.

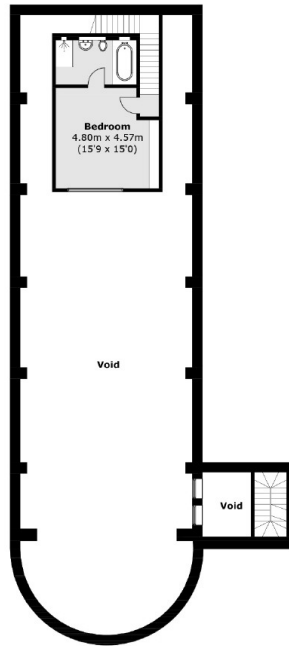
The heart of this home lies in its spacious living areas, where the divine charm of the chapel meets the convenience of modern living. Imagine entertaining guests in the gracefully transformed sanctuary, now a chic reception room, or relaxing in the inviting ambience of the carefully designed bedrooms.

Situated in one of the most sought-after areas of Mill Hill, enjoy the convenience of proximity to local amenities, including boutique shops, trendy cafes, and renowned restaurants, all contributing to the area's vibrant and diverse lifestyle. Nestled in the heart of Mill Hill, you'll find a community that boasts a harmonious mix of modern convenience and timeless charm. This area epitomises the perfect blend of urban sophistication and natural tranquility.

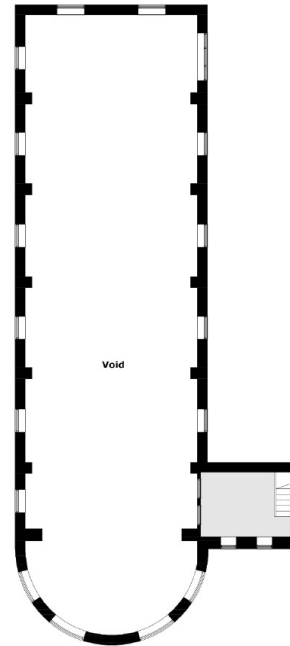
Features

- Four Bedrooms
- Four Bathrooms
- Spa, Gym and Sauna
- Off Street Parking
- Concierge
- South Facing Windows
- High Ceilings

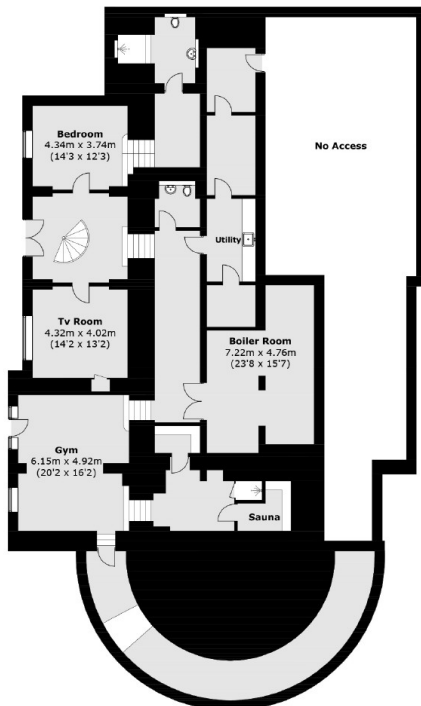
Holborn Close, London, NW7



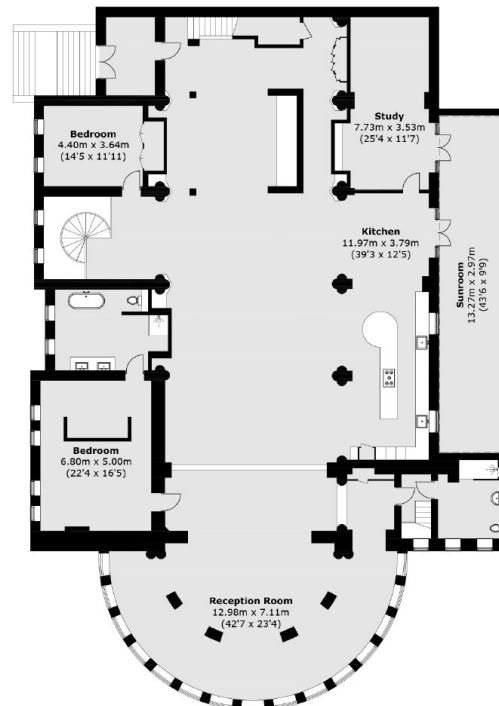
Second Floor



Third Floor



Ground Floor



First Floor

Total area (approx.): 914.2 sq. m (9,840.5 sq. ft)
(Excluding Voids)