



Hendon Lane, N3

£425,000

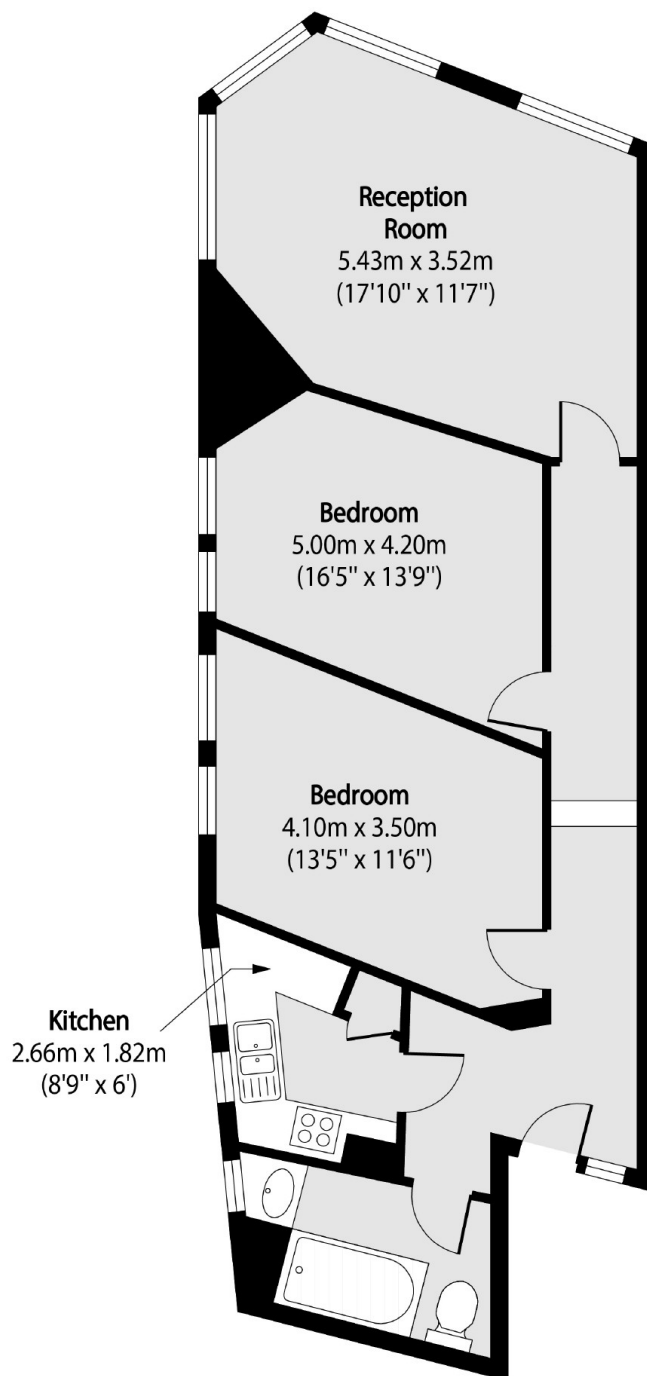
A very well maintained two bedroom apartment ideally situated in the heart of Finchley Central. The property comes complete with a newly fitted kitchen, bathroom, very bright double aspect living room and family bathroom.

Hendon Lane is within minutes of local amenities and public transport that include North Circular, local bus routes and Finchley Central Station, providing frequent travel links across the capital.

Features

- Two Bedrooms
- Spacious Hallway
- Double Aspect Living Room
- Newly Fitted Kitchen
- No Chain
- Town Centre Location

Hendon Lane, London, N3



Total area (approx): 65.79 sq m (708 sq. ft)