

## East End Road, N2

£780,000

An extended and tastefully renovated three bedroom family home offering a spacious kitchen with dining space, living room, downstairs WC, family bathroom, off street parking, garage and private rear garden.

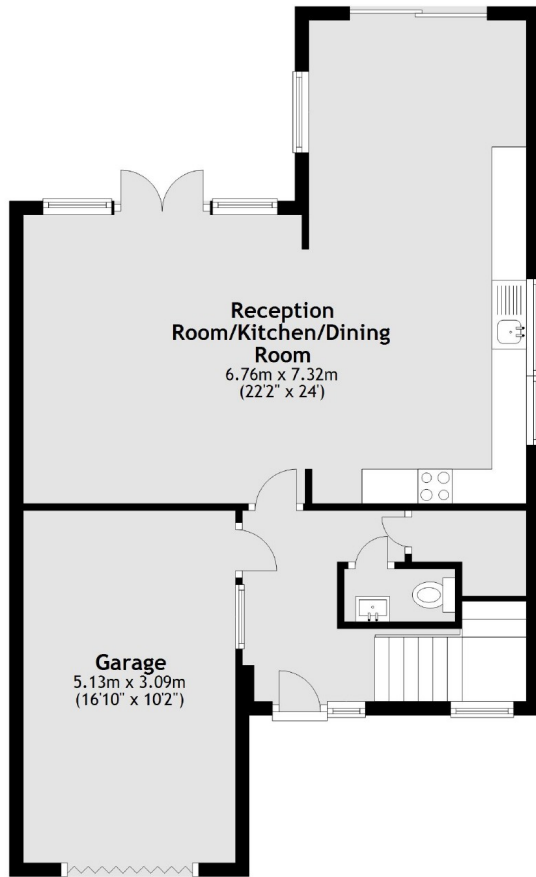
East End Road is situated within close proximity of East Finchley station as well as local bus routes. Nearby schooling include, Bishop Douglas, Christs College, Akiva and Brookland Primary.

### Features

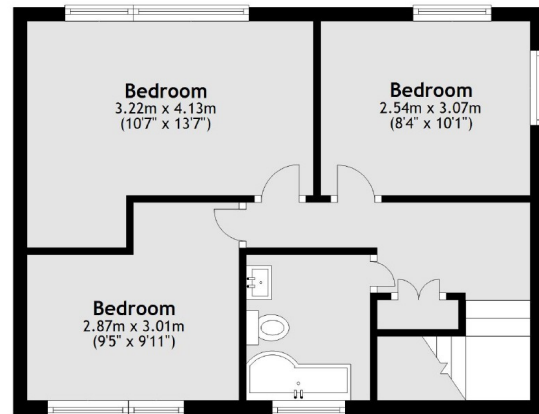
- Three Bedrooms
- Downstairs WC
- Kitchen
- Living Room
- Off Street Parking
- Garage

# East End Road, London, N2

Ground Floor



First Floor



Total area: approx. 108.6 sq. metres (1168.4 sq. feet)