

Old Park Road, EN2

£3,995 Per calendar month

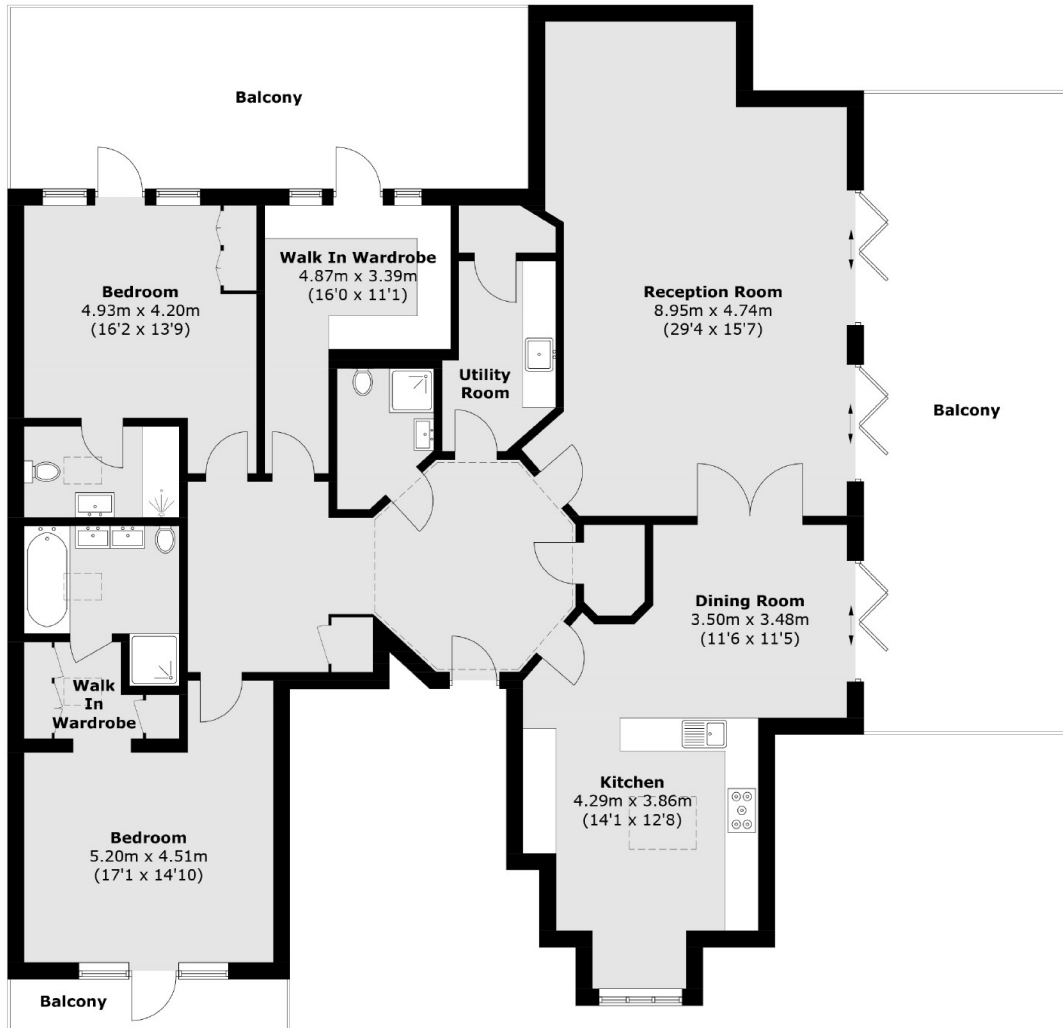
A modern penthouse located within a private gated development, which is set on the whole of the top floor. This property has its own south facing terrace with panoramic views of London. The property has three bathrooms and a double reception with bi-folding doors. The property comes with two secure underground parking spaces.

This property is located close to Enfield Chase Railway Station and overseas Enfield Golf Club. The high street is only moments away, with an excellent selection of restaurants and shops, including Waitrose.

Features

- Three Bedrooms
- Double Reception
- Three Bathrooms
- Two Parking Spaces
- Large Terrace
- Penthouse

Old Park Road, Enfield, EN2



Total area (approx.): 187.3 sq. m (2,016.0 sq. ft)
Balcony (approx.): 77.8 sq. m (837.4 sq. ft)