



Nether Street, N3

£400,000

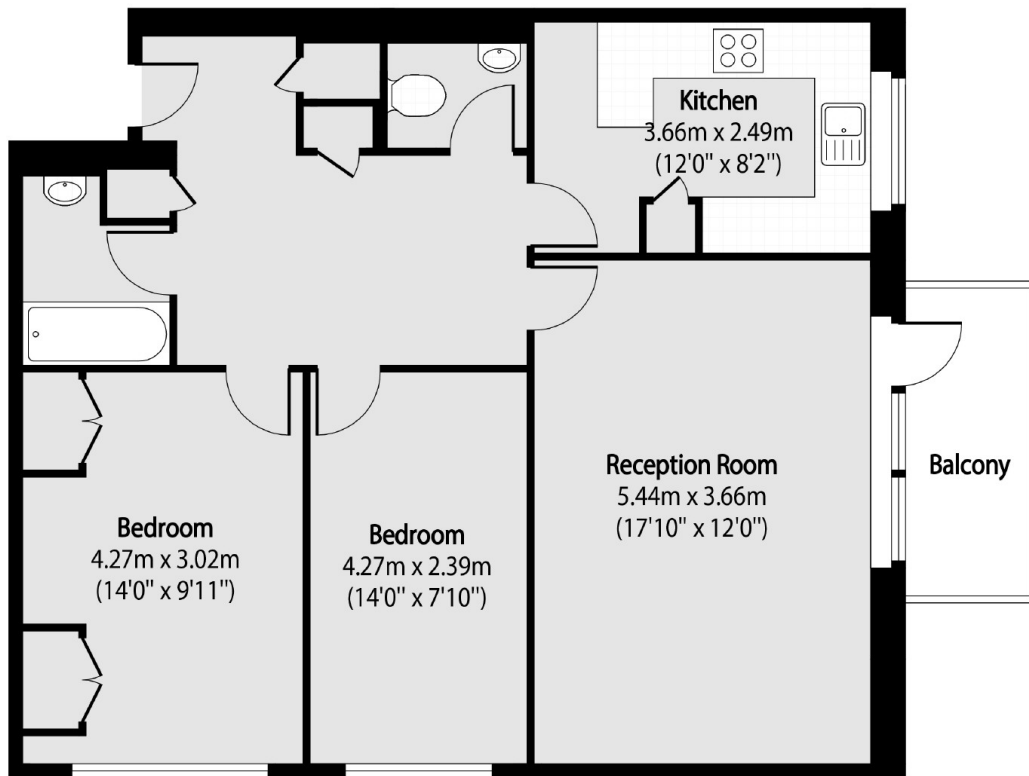
A two bedroom apartment on Nether Street. This flat includes communal gardens and a private balcony along with parking.

The Laurels is ideally located within close proximity of high street amenities and transport links including West Finchley underground station, providing fantastic connections across the capital via the Northern line. Local schooling includes Moss Hall Primary and Finchley Catholic Secondary.

Features

- Two Bedrooms
- Balcony
- Long Lease
- Parking Space
- Communal Gardens
- Chain Free

Nether Street, London, N3



Total area (approx): 71.44 sq m (769 sq. ft)

Balcony total area (approx): 4.55 sq m (49 sq. ft)