



Royal Engineers Way, NW7 £725,000

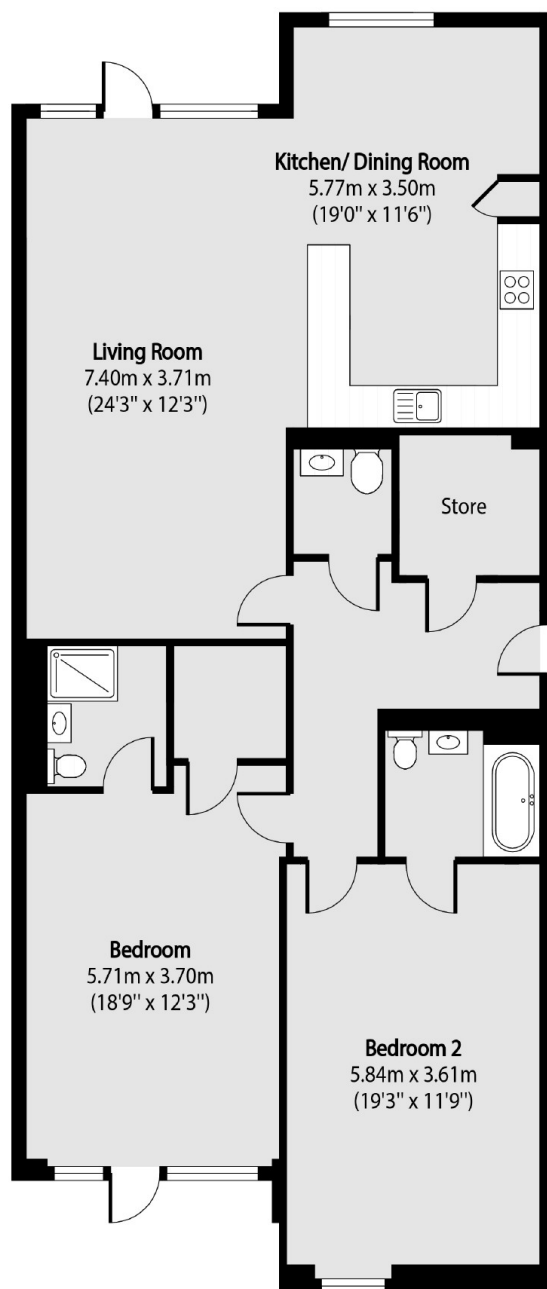
An exceptional two double bedroom apartment with an impressive 1276 sq ft of living space. This property offers a substantial open-plan living room, kitchen and separate dining area, two bathrooms, private terrace, parking, locked storage and communal facilities.

Burghley House is located in one of Millbrook Park's best locations, less than 200 metres from Mill Hill East Zone 4 Northern line train station, and a Co-op. It is also a short walk from Waitrose and Virgin Active Gym.

Features

- Two Double Bedrooms
- Two Bathrooms
- Large Living Space
- Allocated
- Locked Storage Unit
- Communal Facilities

Royal Engineers Way, London, NW7



Total area (approx): 118.56 sq m (1276 sq. ft)

Patio/Balcony/Terrace total area (approx): 26.19 sq m (282 sq. ft)