



Brompton Mews, N12

£800,000

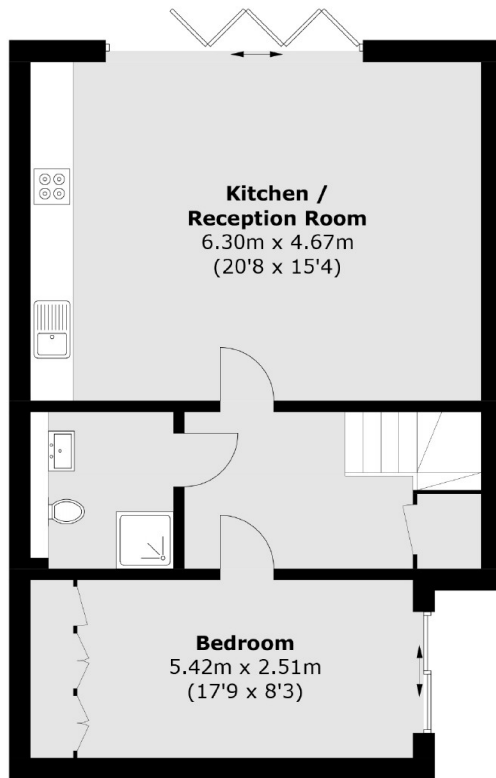
Situated within a gated mews development, this three bedroom unique home offers an open plan living and dining room with bi-folding doors, two bathrooms, large storage cupboard, private patio and parking.

The property is located within 0.5 miles of West Finchley station as well as an abundance of nearby amenities on the High Road. Local highly regarded schools include St. Michaels Catholic, with an outstanding Ofsted report.

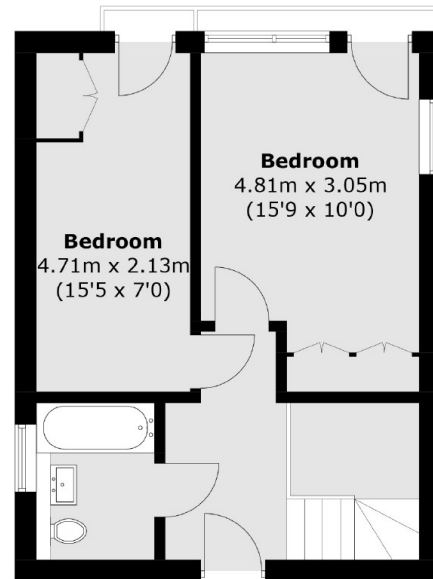
Features

- Modern Fitted Kitchen
- Three Double Bedrooms
- Two Bathrooms
- Parking
- Gated Development
- Close to Amenities

Brompton Mews, London, N12



Ground Floor



First Floor

Total area (approx.): 98.1 sq. m (1,055.9 sq. ft)