



The Ridgeway, NW7

£1,295,000

Dexters



The Ridgeway, NW7

A wonderful Tudor-style detached family home located on a highly regarded road, within reach of Mill Hill East Underground station and sought-after schools such as Millbrook Primary and St. Vincent's Catholic School.

The property includes six bedrooms, two reception rooms, a conservatory, and a substantial kitchen. It also features a mature, well-maintained rear garden with a raised deck, as well as a driveway and a garage.

The Ridgeway is an area that attracts many families due to its proximity to local amenities, public transport and green spaces. Nearby villages such as Totteridge and Woodside Park offer a selection of coffee shops as well as restaurants and public houses.

Features

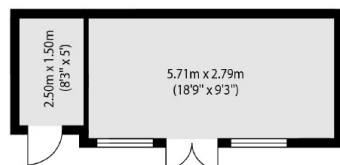
- Six Bedrooms
- Two Reception Rooms
- Mature Rear Garden
- Driveway
- Garage
- Large Kitchen



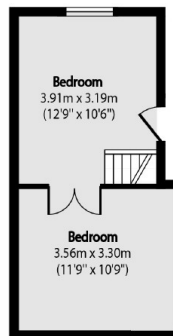




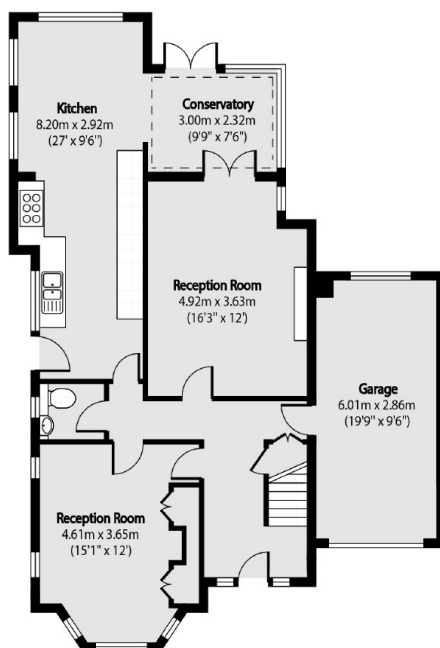
The Ridgeway, London, NW7



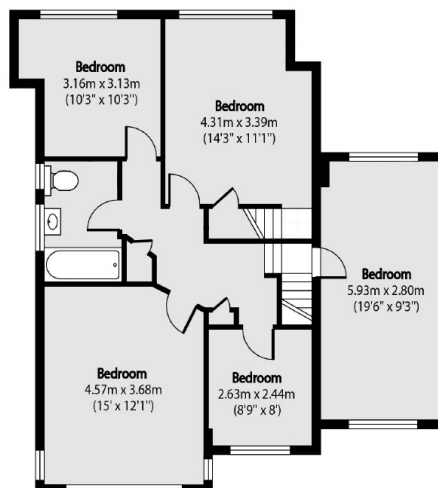
Out Building



Second Floor



Ground Floor



First Floor

Total area (approx): 205.21 sq m (2209 sq. ft)

Out Building total area (approx): 19.96 sq m (214 sq. ft)

Dexters

Finchley
126 Ballards Lane
Finchley
London
Sales
020 8742 4180

Energy Rating: E. We aim to make our particulars both accurate and reliable. However they are not guaranteed; nor do they form part of an offer or contract. If you require clarification on any points then please contact us, especially if you're traveling some distance to view. Please note that appliances and heating systems have not been tested and therefore no warranties can be given as to their good working order.

 **RICS** | Regulated
Estate Agent
and Letting Agent

dexters.co.uk