



The Ridgeway, NW7
£1,350,000

Dexters



The Ridgeway, NW7

A wonderful 'Tudor' style detached family home located on this highly regarded road within reach of Mill Hill East underground and local, sought after schooling such as Millbrook Primary and St Vincents Catholic.

The property comes complete with six bedrooms, two reception rooms as well as a conservatory and a substantial kitchen and breakfast room, a mature well kept rear garden with a raised deck, driveway and garage.

The Ridgeway is an area that attracts many families due to its proximity to local amenities, public transport and green spaces. Nearby villages such as Totteridge and Woodside Park offer a selection of coffee shops as well as restaurants and public houses.

Features

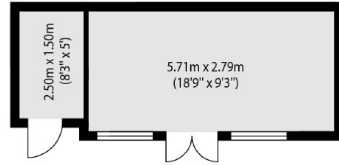
- Six Bedrooms
- Two Reception Rooms
- Mature Rear Garden
- Driveway
- Garage
- Large Kitchen



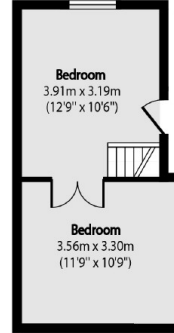




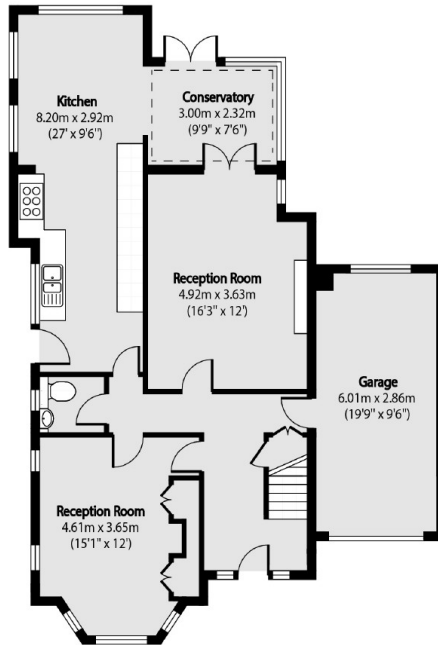
The Ridgeway, London, NW7



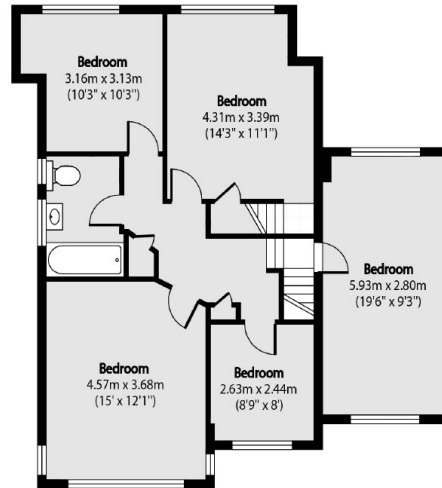
Out Building



Second Floor



Ground Floor



First Floor

Total area (approx): 205.21 sq m (2209 sq. ft)

Out Building total area (approx): 19.96 sq m (214 sq. ft)