



Fallow Court Avenue, N12

£825,000

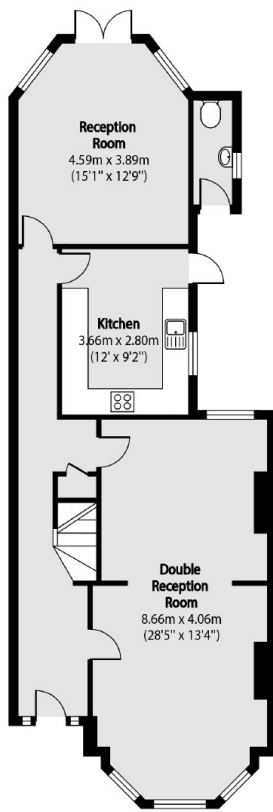
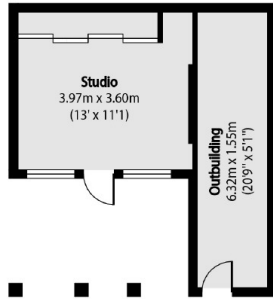
A spacious five bedroom mid terrace family home complete with three reception rooms, two bathrooms, brick built garden studio with additional storage and off street parking for two vehicles.

Fallow Court is ideally located in close proximity of West Finchley station and high street amenities which can be found along both Ballards Road and North Finchley.

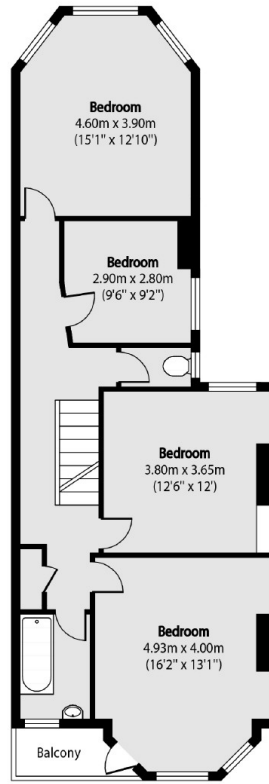
Features

- Five Bedrooms
- Two Bathrooms
- Three Reception Rooms
- Garden Studio
- Off Street Parking
- Spacious Garden

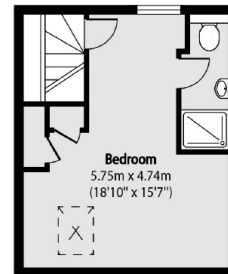
Fallow Court Avenue, London, N12



Ground Floor



First Floor



Second Floor

Total area (approx): 181.43 sq m (1953 sq. ft)
 Studio Total area (approx): 14.40 sq m (155 sq. ft)
 Outbuilding Total area (approx): 10.08 sq m (109 sq. ft)
 Balcony total area (approx): 2.53 sq m (27 sq. ft)