



Moss Hall Grove, N12

£300,000

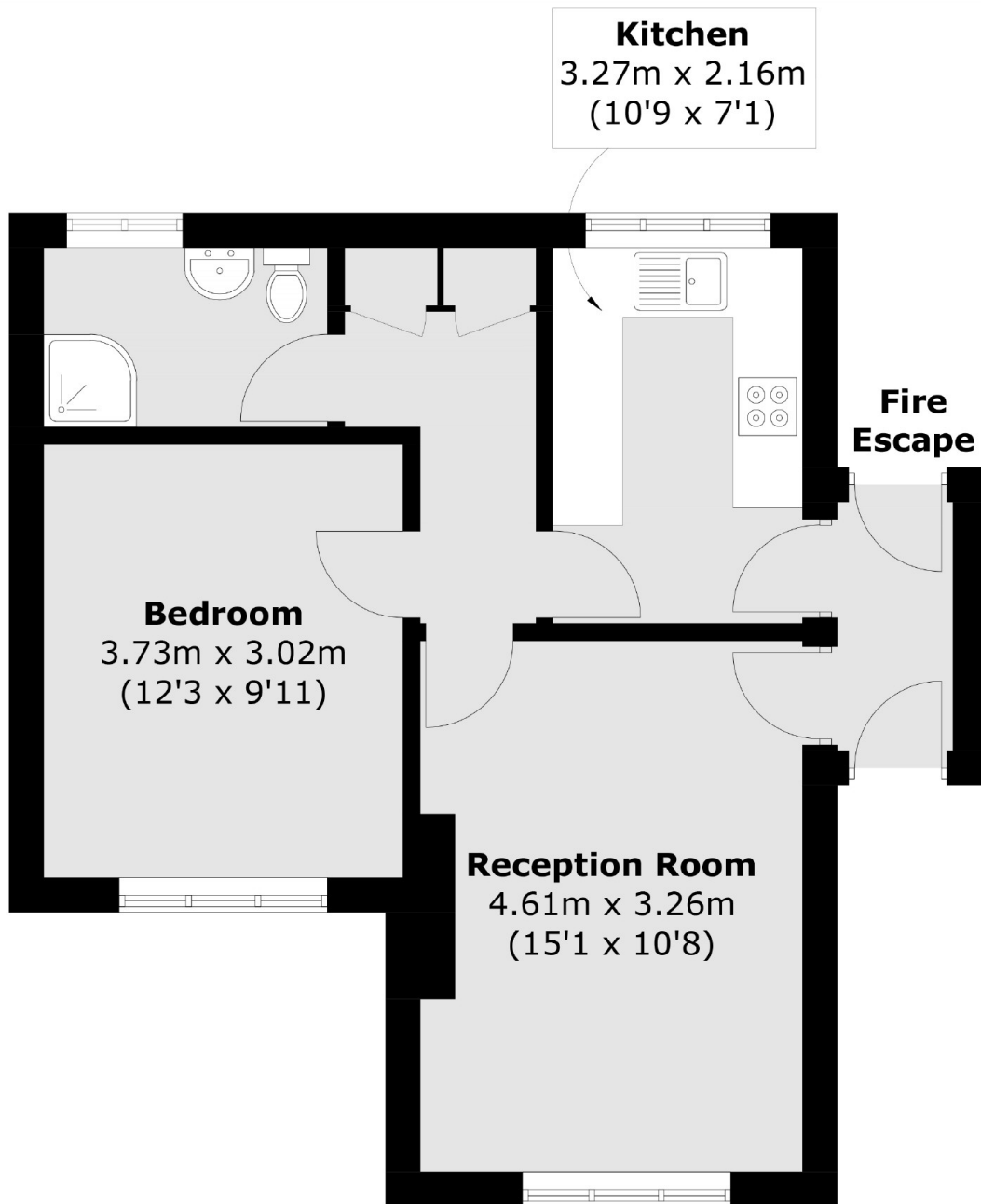
A well presented one bedroom apartment in Moss Hall Court, North Finchley. The property is located on the top floor with a spacious living area and a good sized kitchen. It is offered to the market with no chain.

Moss Hall Court is ideally located within close proximity of high street amenities and transport links including West Finchley underground, providing fantastic connections across the capital via the Northern line. Local schooling includes Moss Hall Primary and Finchley Catholic Secondary.

Features

- No Chain
- Family Bathroom
- Residents Parking
- Top Floor
- Double Bedroom
- West Finchley Station

Moss Hall Grove, London, N12



Total area (approx.): 47.2 sq. m (508.0 sq. ft)