



Ballards Lane, N3

£550,000

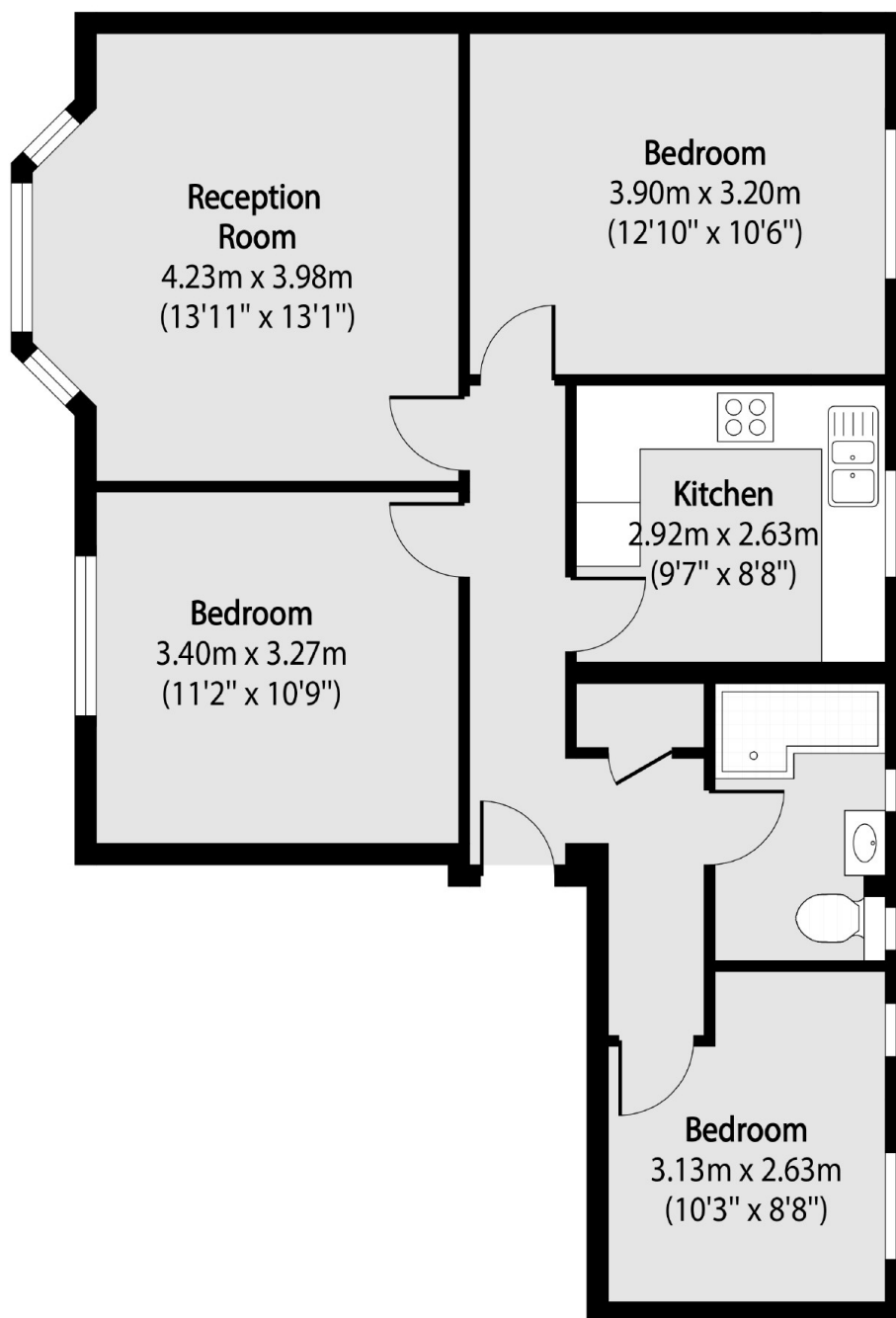
A newly renovated three bedroom apartment in the popular Finchley Court that comes complete with a family bathroom, living room with garden views and resident parking and a share of freehold,

Finchley Court is ideally located just off Ballards Lane, offering an array of restaurants, coffee shops and retail outlets. The nearest station being West Finchley, provides Northern Line links across the capital.

Features

- Three Bedrooms
- Family Bathroom
- Share of Freehold
- Communal Gardens
- Close to Station
- Residents Parking

Ballards Lane, London, N3



Total area (approx): 68.92 sq m (742 sq. ft)