



Regiment Hill, NW7

£500,000

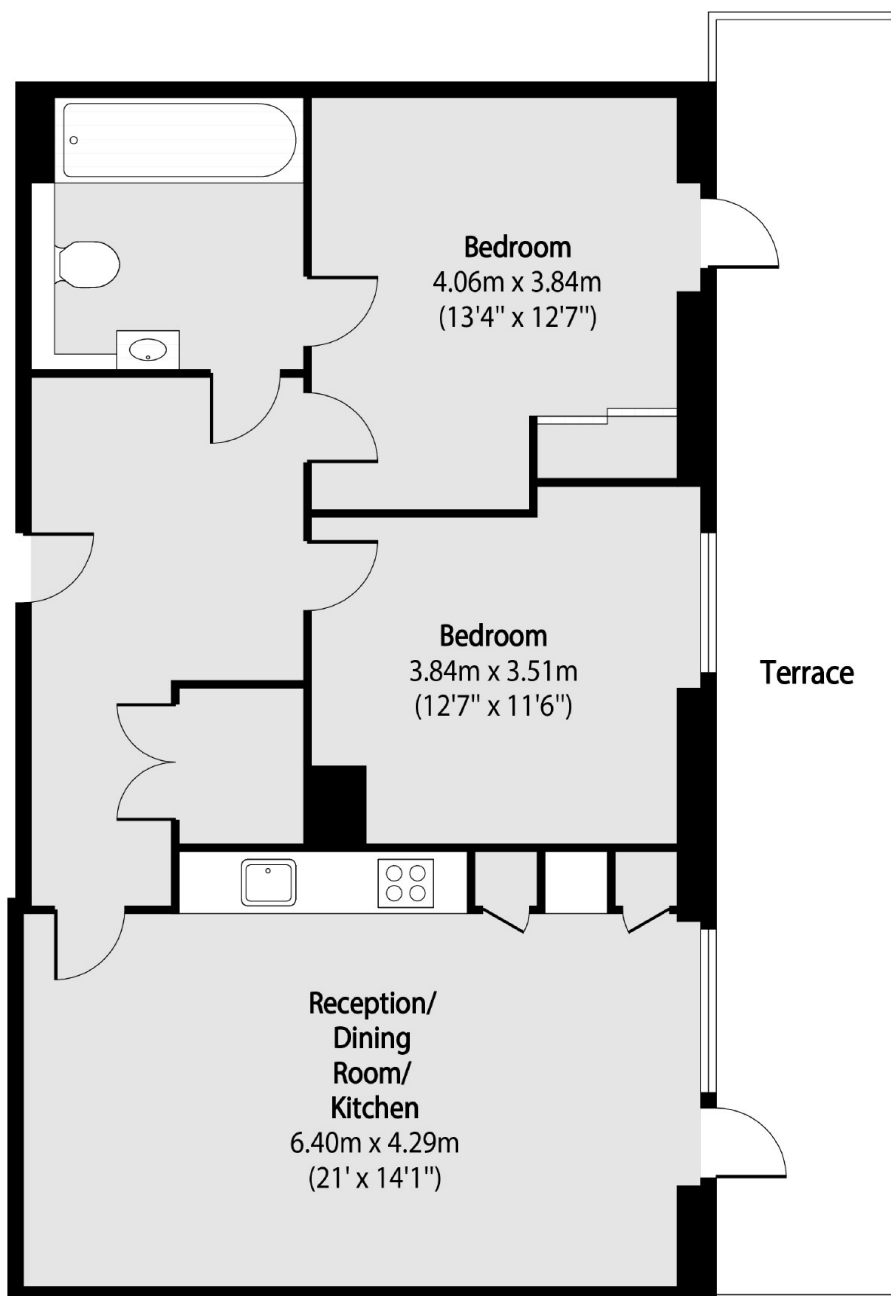
A modern ground floor apartment located within the ever popular Millbrook Park, Mill Hill. The property comes complete with parking, two double bedrooms, family bathroom, open plan living room and large private terrace.

Millbrook Park is ideally located within minutes of Mill Hill East station profiling frequent travel links along the Northern Line. Local amenities, parks and nature walks are all within walking distance as is highly regarded schooling.

Features

- Ground Floor Apartment
- Two Double Bedrooms
- Family Bathroom
- Allocated Parking
- Open Plan Living
- No Chain

Regiment Hill, London, NW7



Total area (approx): 76.08 sq m (819 sq. ft)

Terrace total area (approx): 21.93 sq m (236 sq. ft)