



## Gruneisen Road, N3

£715,000

An extended three/four bedroom period property that has been tastefully renovated throughout to a modern style, located within walking distance of Victoria Park and Finchley Central.

Gruneisen Road is located just off Ballards Lane that provides an array of eateries, coffee shops and retail outlets. Victoria Park is within walking distance as is Finchley Central underground proving links across the capital via the Northern Line.

### Features

- Three/Four Bedrooms
- Two Reception Rooms
- Family Bathroom
- Garden With Patio
- Central Location
- No Chain



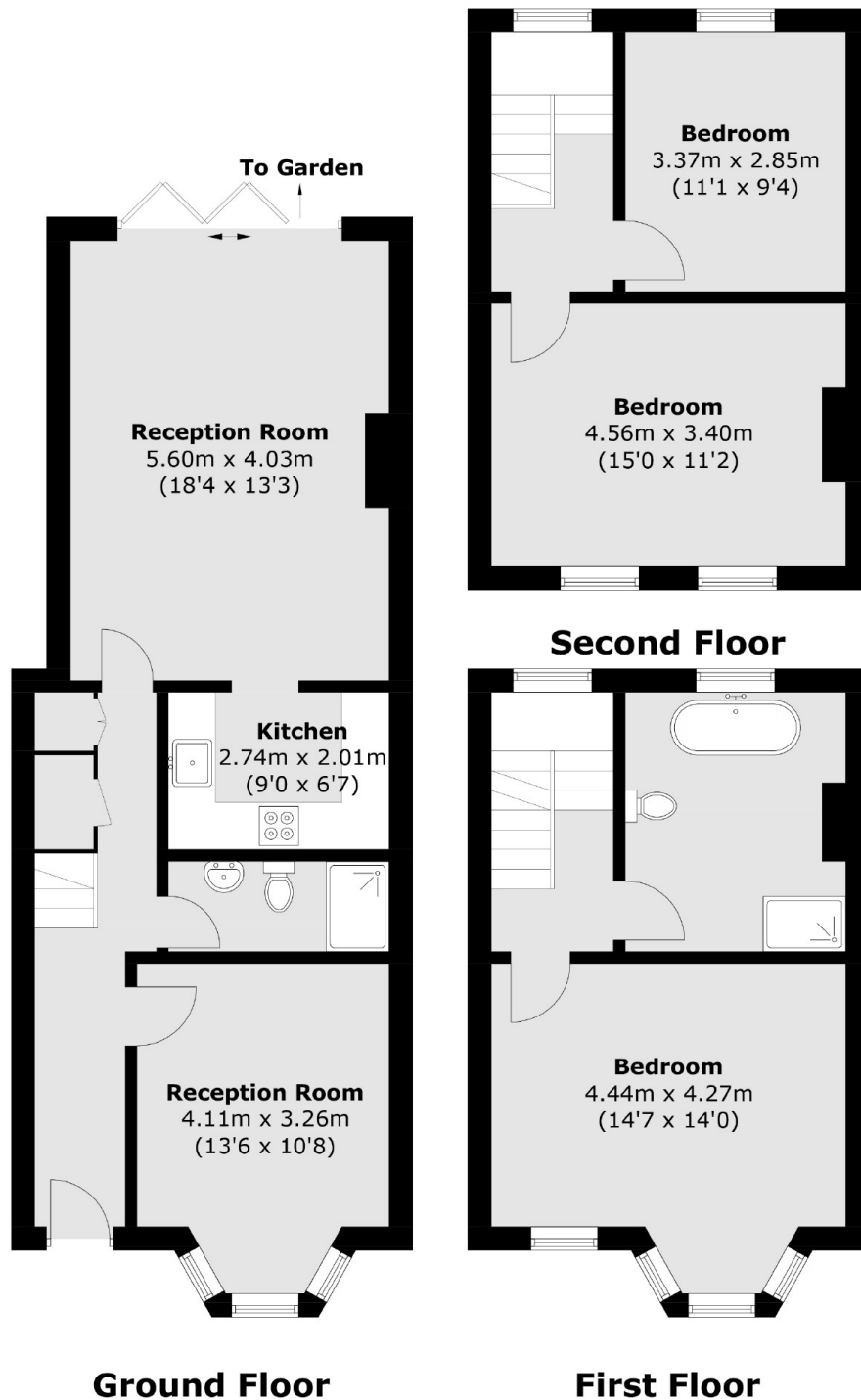
## Gruneisen Road, N3

The property which is spread across three floors offer two reception rooms, a kitchen with appliances, three bedrooms with a potential fourth, a family bathroom, rear garden with patio, outside storage, on street parking and is offered to the market with no onward chain.





# Gruneisen Road, London, N3



Total area (approx.): 118.1 sq. m (1,271.2 sq. ft)