

Walking Distance to Central Heswall • Two Double Bedrooms • Spacious Lounge Diner • Well-Fitted Breakfast Kitchen • Bathroom Plus En-Suite Shower Room • Allocated Parking with Visitor Space • Ideal Downsize or First Time Buy • Ground Floor



Flat 10, Rosebrae Court, 110 Pensby Road £180,000 Leasehold

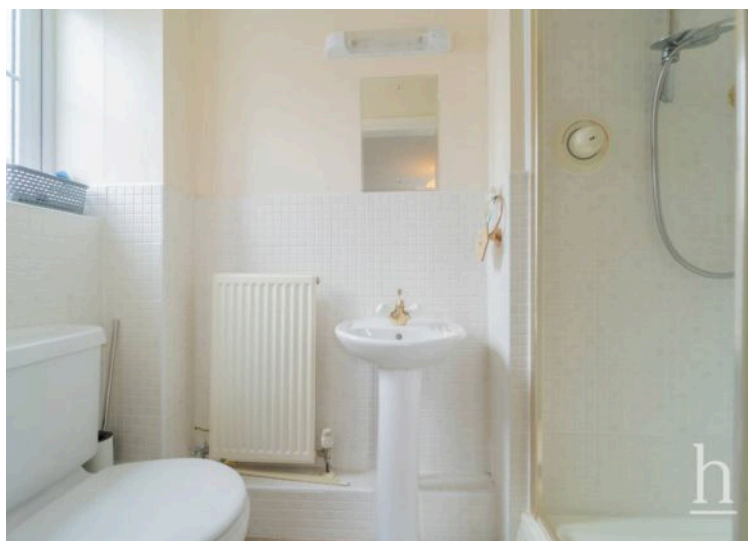
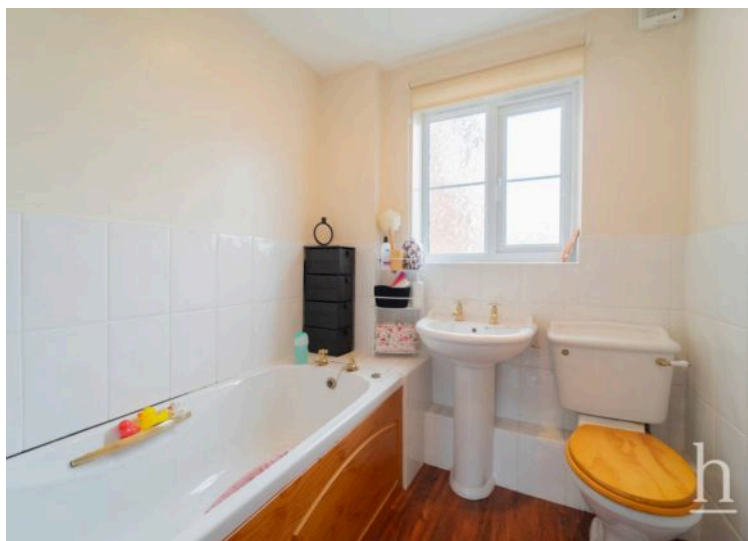




A STYLISH MODERN APARTMENT NEAR HESWALL CENTRE! Situated just a stone's throw away from the centre of Heswall town this ground floor apartment is the perfect blend of modern living and practical access to local amenities.
Council Tax band: C

Tenure: Leasehold

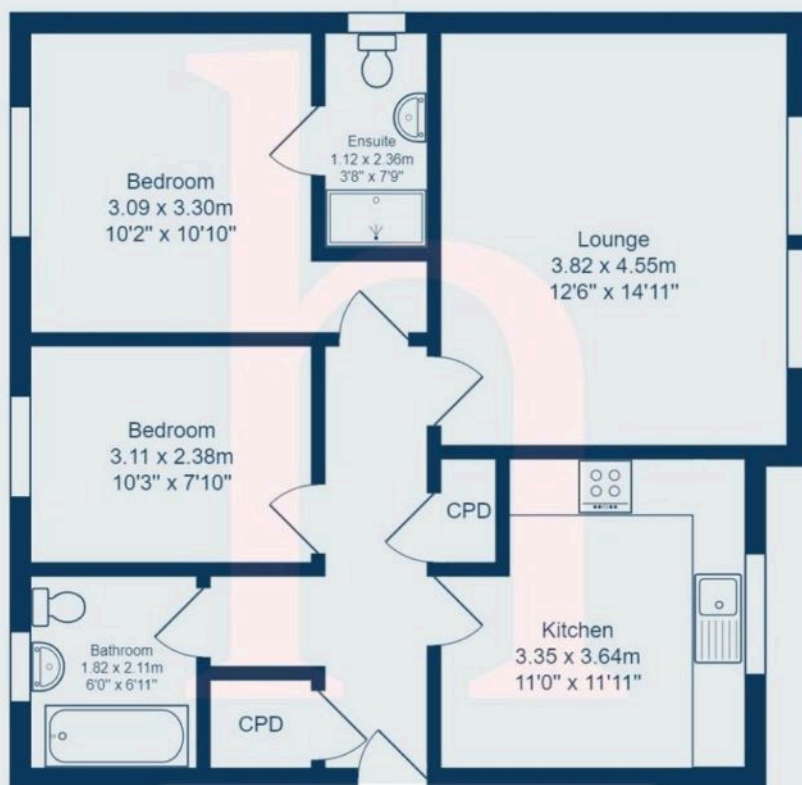






Apt 10, Rosebrae Crt

Ground Floor



Total Area: 66.1 m² ... 712 ft²

All measurements are approximate and for display purposes only.

You can include any text here. The text can be modified upon generating your brochure.