



Willow Close | | Hockley | SS5 5DH

Guide Price £400,000

bear
Estate Agents

Willow Close |
Hockley | SS5 5DH
Guide Price £400,000

Guide Price £400,000 - £425,000

This delightful semi-detached house presents an excellent opportunity for families and individuals alike. The property boasts a generous layout, providing ample space for comfortable living.

The well-proportioned bedrooms are perfect for relaxation, while the living areas are designed for both entertaining and everyday family life. The property also features a garage and off-street parking, ensuring convenience for you and your guests.

One of the standout features of this home is the spacious rear garden, which offers a wonderful outdoor space for children to play, gardening enthusiasts to thrive, or simply for enjoying the fresh air during the warmer months. With the property offering potential to extend and add your own personal touches, this property is not one to be missed.

Moreover, the location is particularly advantageous, as it is situated close to local amenities. Located in the popular Broadlands Estate, this property offers a chance to live in a very desirable area in Hockley.

- Semi Detached House
- Three Bedrooms
- Garage
- Spacious Lounge
- Close To Local Amenities
- Conservatory
- Spacious Rear Garden

Hallway

5'52" x 13'33 (1.52m' x 3.96m)

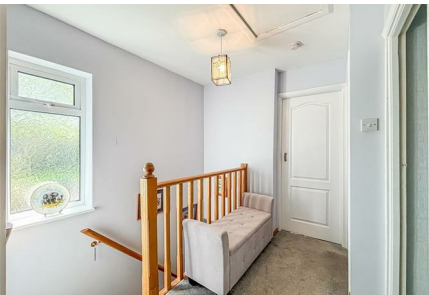
Wooden effect floors throughout access into kitchen and lounge smooth ceilings with pendant ceiling light .

Lounge

11'96 x 28'88 (3.35m'29.26m x 8.53m)

Carpet throughout smooth of pendant feeling light French sliding doors onto the conservatory double glaze bay window to the front aspect.





Kitchen

6'95 x 9'76 (1.83m x 2.74m)
Wooden effect floors, smooth ceilings with coving, pendant ceiling light, freezing, plumbing for washing machine.

Conservatory

18'52 x 6'64 (5.49m x 1.83m)
Wooden effect floors double glazed window surround access in the WC.

Landing

8'19 x 6'80 (2.44m x 1.83m)
Carpet throughout move ceilings with pendant ceiling light obscure double glaze window to side aspect.

Bedroom One

9'44 x 15'39 (2.74m x 4.57m)
Carpet throughout double glazed bay window to the front aspect.

Bedroom Two

12'85 x 10'68 (3.66m x 3.05m)
Top it throughout pendant ceiling light double glazed window to the rear aspect.

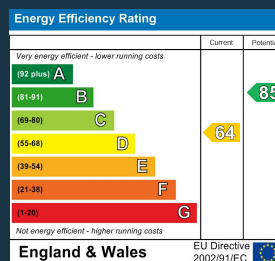
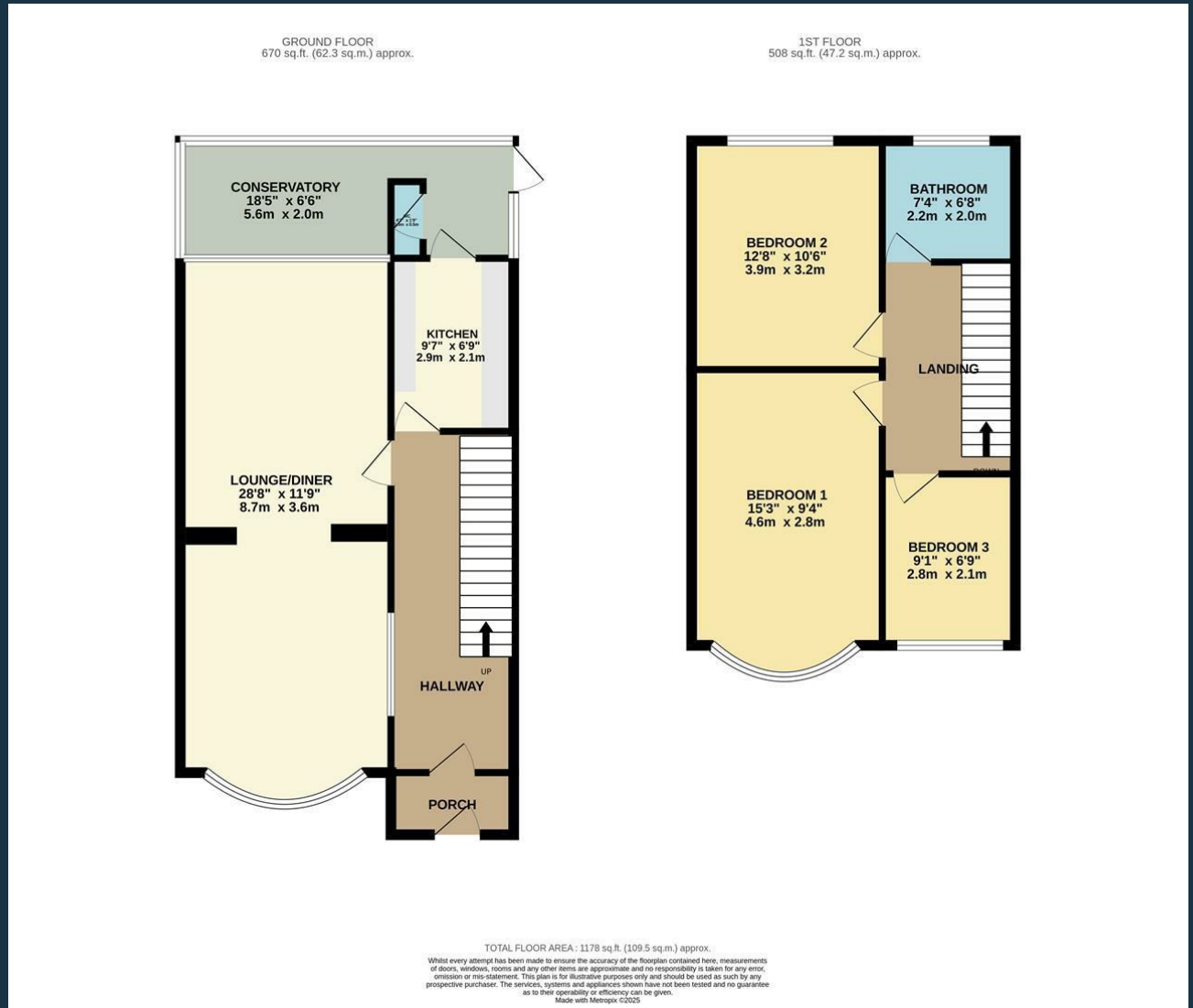
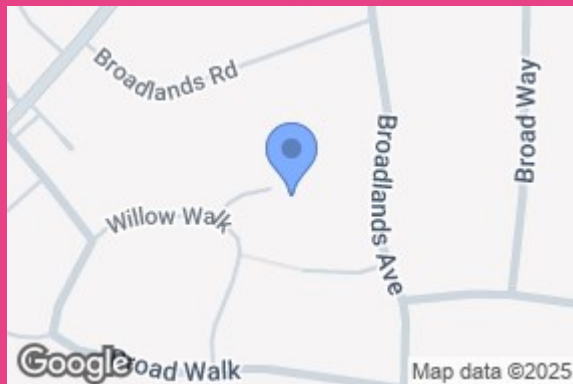
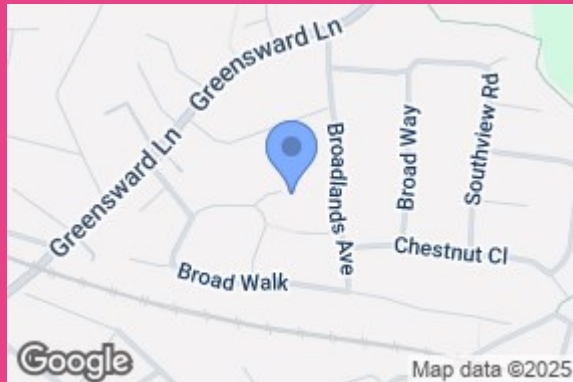
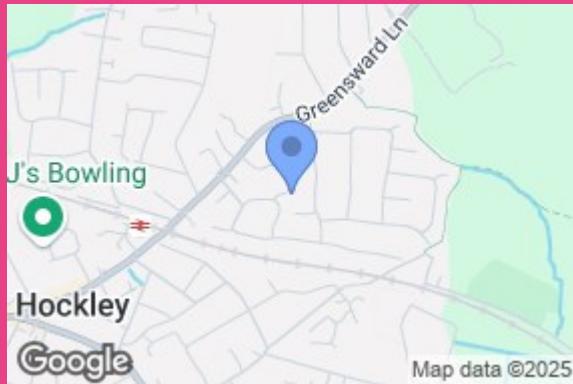
Bedroom Three

19'15 x 6'92 (5.79m x 1.83m)

Bathroom

7'48 x 6'80 (2.13m x 1.83m)
Wooden effect floor and tiled surrounds, double glazed obscure window to the rear, walk and shower, vanity sink unit with hot and cold taps, wall mounted towel rail.





11 Main Road
Hockley
Essex
SS5 4QY
01702 416476
hockley@bearestateagents.co.uk
<https://www.bearestateagents.co.uk>