



Welcome to this charming two-bedroom semi-detached bungalow on High Road, located in the picturesque and sought-after area of Hockley.

This home features two spacious double bedrooms, a contemporary family bathroom, a modern kitchen with integrated appliances and a spacious living room where bi-folding doors open to reveal the stunning rear garden. One of the unique highlights of this lovely bungalow is the newly constructed games room/office, complete with a bar and WC. This versatile space is ideal for entertaining guests, hosting gatherings, or simply unwinding with family and friends.

The property is ready to move into, allowing you to start enjoying the comforts of your new home without any delay. Additionally, the large, beautifully landscaped rear garden provides a peaceful outdoor retreat where you can soak up the sunshine, indulge in some gardening or simply relax with a cup of tea in the fresh air.

Don't miss the chance to make this captivating bungalow your new home and experience the convenience and comfort it has to offer, including being located within walking distance of Hockley Station. Schedule a viewing today and imagine the wonderful memories you'll create in this welcoming space on High Road, Hockley.

- Modern Two Bedroom Semi Detached Bungalow
- Landscaped Rear Garden
- Modern Kitchen And Bathroom
- Plans Passed For Rear Extension
- Easy Access To Bus Routes And Hockley Highstreet
- Recently Built Garden Room With Bar And WC
- Ample Off Street Parking
- Spacious Lounge With Bi-Folds
- High Specification Throughout
- A Must View

High Road

Hockley

£475,000

Offers In Excess Of



High Road



Interior

Upon entering this property, you're welcomed by a bright and airy entrance hall which sets the tone for the rest of the home. The spacious lounge is a highlight, featuring a contemporary media wall and bi-fold doors that open directly onto the rear garden, creating a seamless indoor-outdoor flow. This room also offers ample room for a dining table, making it perfect for both relaxation and entertaining.

Adjacent to the lounge, the modern kitchen is equipped with integrated appliances and sleek fitted units, offering a functional yet stylish space for cooking. The bungalow includes two generously sized double bedrooms, with the primary bedroom boasting a large bay window that allows natural light to flood the room. The main family bathroom has been recently updated with a three-piece suite, providing a contemporary and comfortable space.

Exterior

The exterior of this property is equally impressive, starting with large block-paved driveway provides off-street parking for up to seven vehicles, ensuring convenience for you and your guests. Side access leads to the beautifully landscaped rear garden, which begins with a decked seating area – perfect for alfresco dining and relaxation. The garden is well maintained, featuring steps leading down to a lush lawn, and further steps guiding you to an additional decked area at the rear.

This area perfect for entertainment and connects directly to a newly built garden room. The versatile space is fitted with new herringbone flooring, a modern kitchenette, a sink, and a WC, making it suitable for use as a home gym, office, or games. Fully powered and thoughtfully designed, the garden room offers endless possibilities for its use, while the entire garden is enclosed with fencing, providing both privacy and security.

Planning Permission

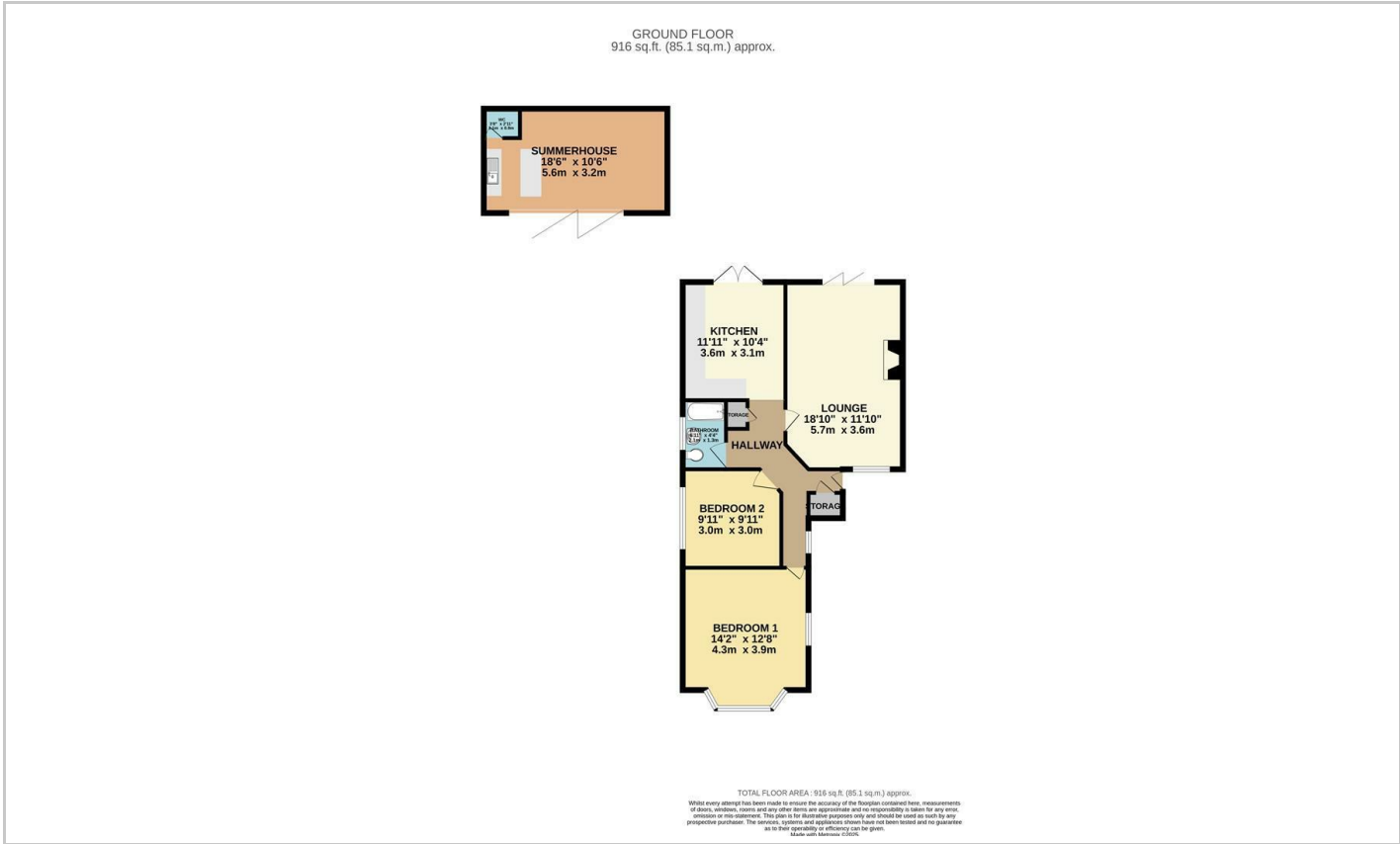
Permission has been granted by Rochford District Council to construct a spacious one storey rear extension, allowing for relocation of the existing kitchen with an open plan dining area overlooking the garden and addition of a third bedroom.

Building regulation drawings and specification available upon request.

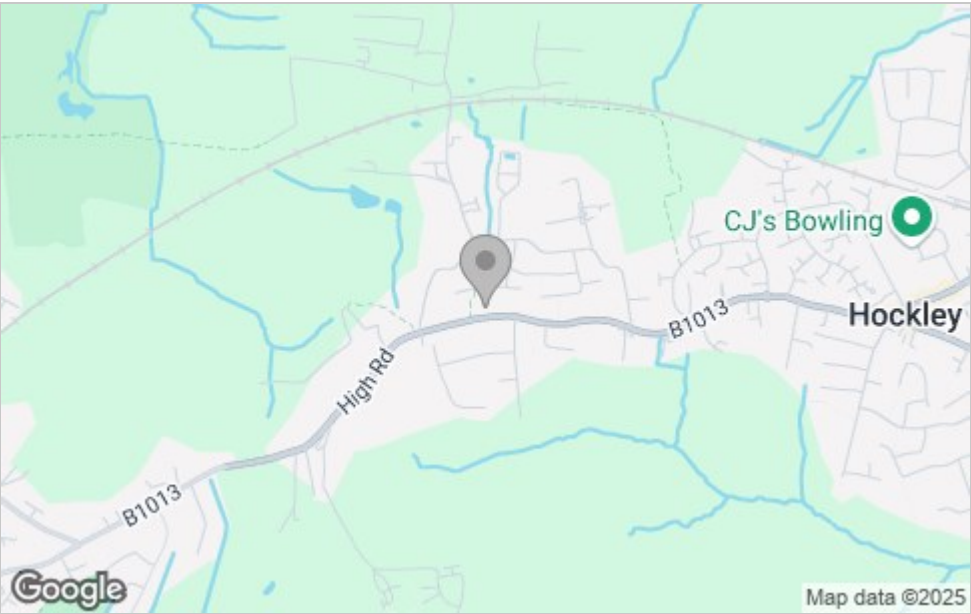
Application Reference:
23/00651/FUL



Floor Plan



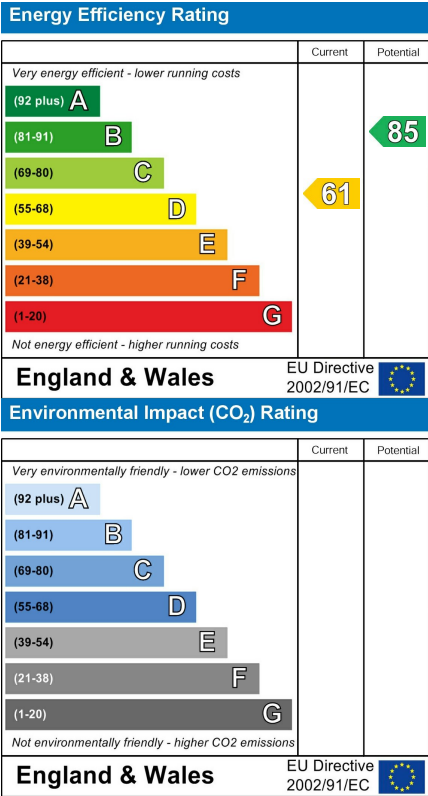
Area Map



Viewing

Please contact our Hockley Office on 01702 416476 if you wish to arrange a viewing appointment for this property or require further information.

Energy Efficiency Graph



These particulars, whilst believed to be accurate are set out as a general outline only for guidance and do not constitute any part of an offer or contract. Intending purchasers should not rely on them as statements of representation of fact, but must satisfy themselves by inspection or otherwise as to their accuracy. No person in this firms employment has the authority to make or give any representation or warranty in respect of the property.

11 Main Road, Hockley, Essex, SS5 4QY

Office: 01702 416476 hockley@bearestateagents.co.uk <https://www.bearestateagents.co.uk>