



Welcome to this stunning penthouse flat located in the desirable development, The Courtyard, Rayleigh. This exceptional property boasts an impressive open plan layout, perfect for modern living and entertaining. With three well-proportioned bedrooms, including a luxurious master suite complete with an ensuite bathroom, this home offers both comfort and privacy.

Located in the heart of Rayleigh Highstreet and walking distance to Rayleigh Train Station for a direct commute into London within the hour this pent house is not only a home but a great investment opportunity with a high yield and a lengthy lease.

The spacious open plan reception room is bathed in natural light, with high vaulted ceilings creating an open and inviting atmosphere. The contemporary design seamlessly connects the living area to the dining space, making it ideal for hosting family and friends. The additional two bedrooms are versatile and can be easily adapted to suit your needs, whether as guest rooms, a home office, or a children's play area. The penthouse also features a second bathroom, ensuring convenience for all residents and guests.

This property is perfect for those seeking a stylish and modern home in a

- Penthouse Apartment
- Excellent Condition
- High Specification And Modern Kitchen With Marble Worksurfaces
- Vaulted Ceiling In Living Room
- One Allocated Parking Space
- Close To Rayleigh Highstreet
- Living Space Across Two Floors
- Great Investment Opportunity
- Long Lease
- No Onward Chain

## The Courtyard

Rayleigh

**£375,000**

Offers In The Region Of



# The Courtyard



## Exterior

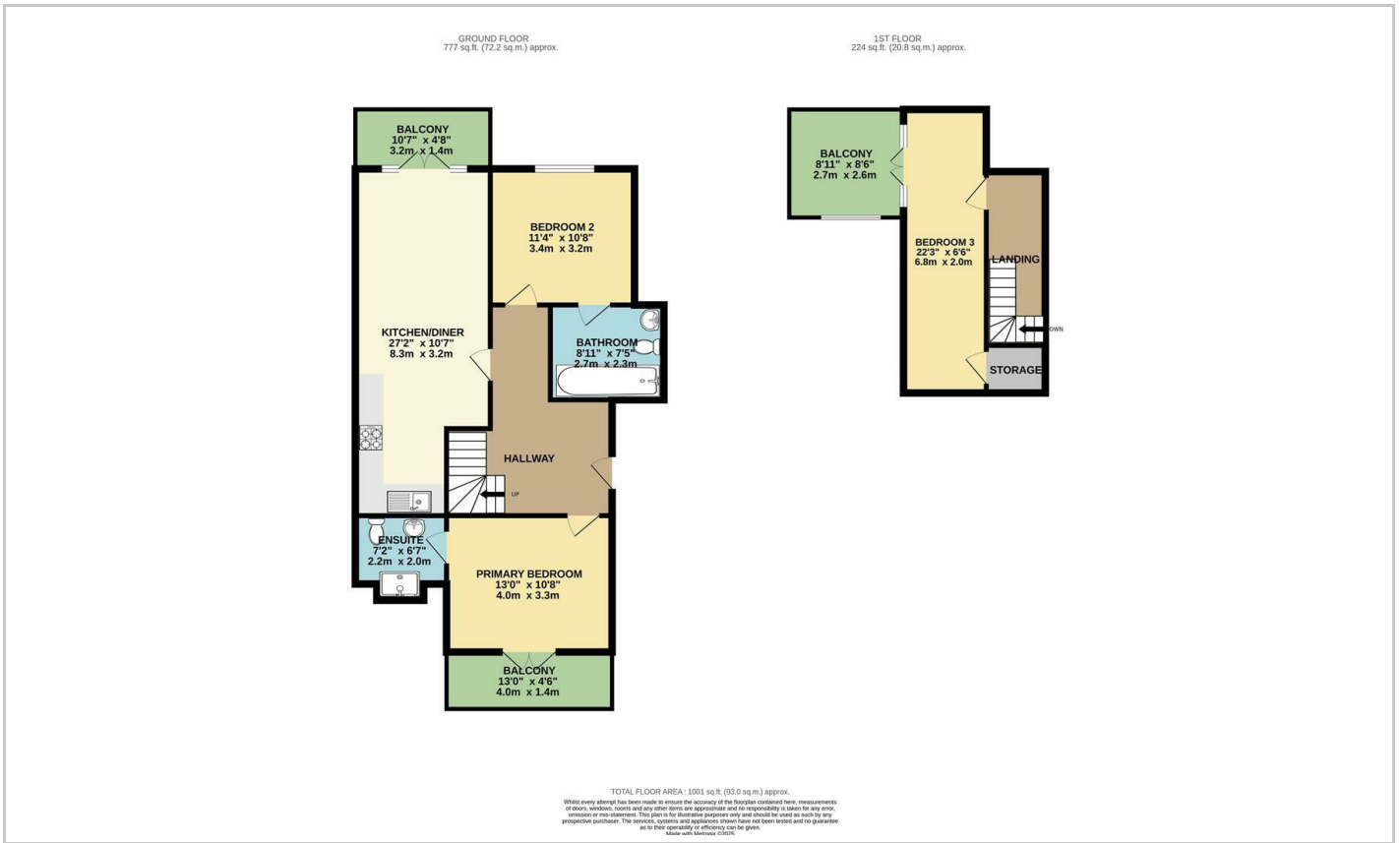
This newly built three-bedroom penthouse offers a modern and stylish exterior, designed to complement contemporary living. The property boasts an open-plan layout, enhancing the sense of space and light throughout. One of its standout features is the stunning roof terrace, providing an impressive outdoor space with panoramic views, perfect for relaxing or entertaining. In addition, two private balconies offer more opportunities to enjoy outdoor living, both offering a tranquil retreat. The penthouse is further complemented by allocated parking, a sought-after feature that adds convenience and ease to everyday life, making it an ideal choice for those seeking a blend of luxury and practicality.

## Interior

Inside, this newly built three-bedroom penthouse offers a beautifully designed and spacious interior. The open-plan layout seamlessly combines the lounge and kitchen areas, creating a bright and inviting space ideal for both relaxation and entertaining. The kitchen features bespoke fitted cabinetry and is equipped with high-end integrated appliances, making it both a functional and stylish centerpiece of the home. The master bedroom includes the luxury of an ensuite bathroom, offering privacy and convenience. In addition to the master suite, there are two further well-sized bedrooms, complemented by a sleek and modern family bathroom. The overall design combines contemporary elegance with practicality, providing the perfect space for comfortable living.



# Floor Plan



# Area Map



# Viewing

Please contact our Hockley Office on 01702 416476 if you wish to arrange a viewing appointment for this property or require further information.

These particulars, whilst believed to be accurate are set out as a general outline only for guidance and do not constitute any part of an offer or contract. Intending purchasers should not rely on them as statements of representation of fact, but must satisfy themselves by inspection or otherwise as to their accuracy. No person in this firm's employment has the authority to make or give any representation or warranty in respect of the property.

11 Main Road, Hockley, Essex, SS5 4QY

Office: 01702 416476 [hockley@bearestateagents.co.uk](mailto:hockley@bearestateagents.co.uk) <https://www.bearestateagents.co.uk>

# Energy Efficiency Graph

