

bear

Estate Agents



Guide Price £230,000 to £250,000.

Welcome to this charming property located in the picturesque Palm Court, Battlesbridge, Wickford. This delightful mobile home boasts two reception rooms, perfect for entertaining guests or simply relaxing with your loved ones. With two bedrooms and two bathrooms, this property offers ample space for comfortable living.

Situated in a serene location close to the River Crouch, this home provides a tranquil environment for those who appreciate nature. The property features two double bedrooms, ideal for a small family or for guests staying over. Additionally, you'll find two off-street parking spaces, ensuring convenience for you and your visitors.

This mobile home is in pristine condition, ready for you to move in and make it your own. Whether you're looking for a peaceful retreat or a cosy place to call home, this property offers the perfect blend of comfort and tranquillity. Don't miss out on the opportunity to own this lovely home in such a desirable location.

- Modern Kitchen And Bathroom
- Garden
- Spacious Lounge
- Off Street Parking
- Idyllic Location
- A Must View

Palm Court

Wickford

£230,000

Guide Price



Palm Court



Frontage

The frontage of this park home offers a welcoming and secure environment. The street is block-paved, providing a neat and well-maintained appearance. Two parking spaces are conveniently located on the side, ensuring easy access. Security is a priority, with CCTV cameras monitoring the area and a private entrance enhancing peace of mind. Situated in a quiet location, this property enjoys close proximity to the scenic River Crouch, making it an ideal retreat for tranquillity and relaxation.

Utility Room

The utility room is a practical and stylish space designed for efficiency. It features fitted cupboards, offering ample storage for household essentials and supplies. An integrated sink provides convenience for various tasks such as washing and cleaning. Positioned adjacent to the kitchen on the right side, it ensures seamless access for additional preparation and organization. Directly in front of the entrance, another doorway leads into the hall, facilitating easy movement throughout the home. The room is distinguished by its attractive surface and flooring, combining functionality with aesthetic appeal to enhance the overall living experience.

Kitchen

Upon entering this modern kitchen, you are immediately greeted by a sense of streamlined functionality and contemporary design. The space is efficiently utilized, with a seamless integration of essential appliances and ample storage solutions, creating a clutter-free and inviting environment. The kitchen boasts an integrated oven and a four-hob stove, perfectly built into the cabinetry to maintain a cohesive aesthetic. The oven, designed for both novice cooks and culinary enthusiasts, offers a range of features to accommodate various cooking styles. Above it, the four-hob stove provides ample space for preparing multiple dishes simultaneously, making it ideal for both everyday meals and larger gatherings. One of the standout features of this kitchen is the abundance of cupboards. These storage units are thoughtfully placed, providing easy access to cookware, utensils, and pantry items. The cabinetry's design not only maximizes storage space but also adds to the kitchen's sleek and modern look.

****Integrated Fridge Freezer:****

The integrated fridge freezer is another practical addition, blending seamlessly with the cabinetry. This design choice ensures that the kitchen maintains a uniform appearance, while the appliance itself offers generous storage for both fresh and frozen goods.

A window on the side wall allows natural light to flood the kitchen, enhancing its warm and welcoming atmosphere. This window not only provides excellent lighting for food preparation but also offers a pleasant view, making the kitchen a bright and enjoyable space to spend time in.

The integrated sink is thoughtfully positioned for both practicality and aesthetic appeal. Its sleek design complements the overall modern feel of the kitchen, and it is ideally located for easy access during food preparation and clean-up.

Bathroom

This well-appointed bathroom features a convenient bath with a fitted shower on the wall, providing both relaxation and functionality. The space includes a modern toilet and a sleek sink, complemented by a handy storage unit mounted on the wall for your essentials. Natural light pours in through a window, enhancing the room's bright and inviting atmosphere.

Lounge

Step into this inviting lounge, a perfect blend of comfort, space, and functionality. Designed to cater to both relaxation and family gatherings, this room offers a cosy yet spacious environment where everyone can feel at home. The centerpiece of the lounge is the collection of big, comfortable sofas. These plush seating options are generously sized, providing ample space for family and guests to sit, relax, and enjoy each other's company. The sofas' soft cushions and supportive structure ensure that everyone can find their perfect spot to unwind. The lounge is bathed in natural light, thanks to the two large windows that adorn the walls. These windows not only brighten the room but also offer picturesque views of the outside, creating a serene and airy atmosphere. The abundance of natural light enhances the room's warmth and makes it a pleasant place to spend time during the day.

Bedroom One

Bedroom 1 is a spacious double bedroom, offering plenty of room around the sides of the bed for comfort and ease of movement. It boasts a fitted walk-in wardrobe, providing ample space for all your clothing and accessories. The bedroom also features an elegant ensuite bathroom, enhancing convenience and privacy. A window on the side of the room allows for excellent natural lighting, making the space bright and inviting. This well-designed bedroom combines functionality with style, perfect for a restful retreat.

Bedroom Two

This inviting double bedroom offers a blend of comfort and functionality. The room features fitted wardrobes, providing ample storage space while maintaining a clean and streamlined look. A beautiful bay window allows for plenty of natural light to flood the room, creating a bright and airy atmosphere. The layout includes additional space for storage solutions, ensuring that the room remains organized and clutter-free. Ideal for relaxation and rest, this bedroom is perfect for creating a cosy and serene retreat.

Study

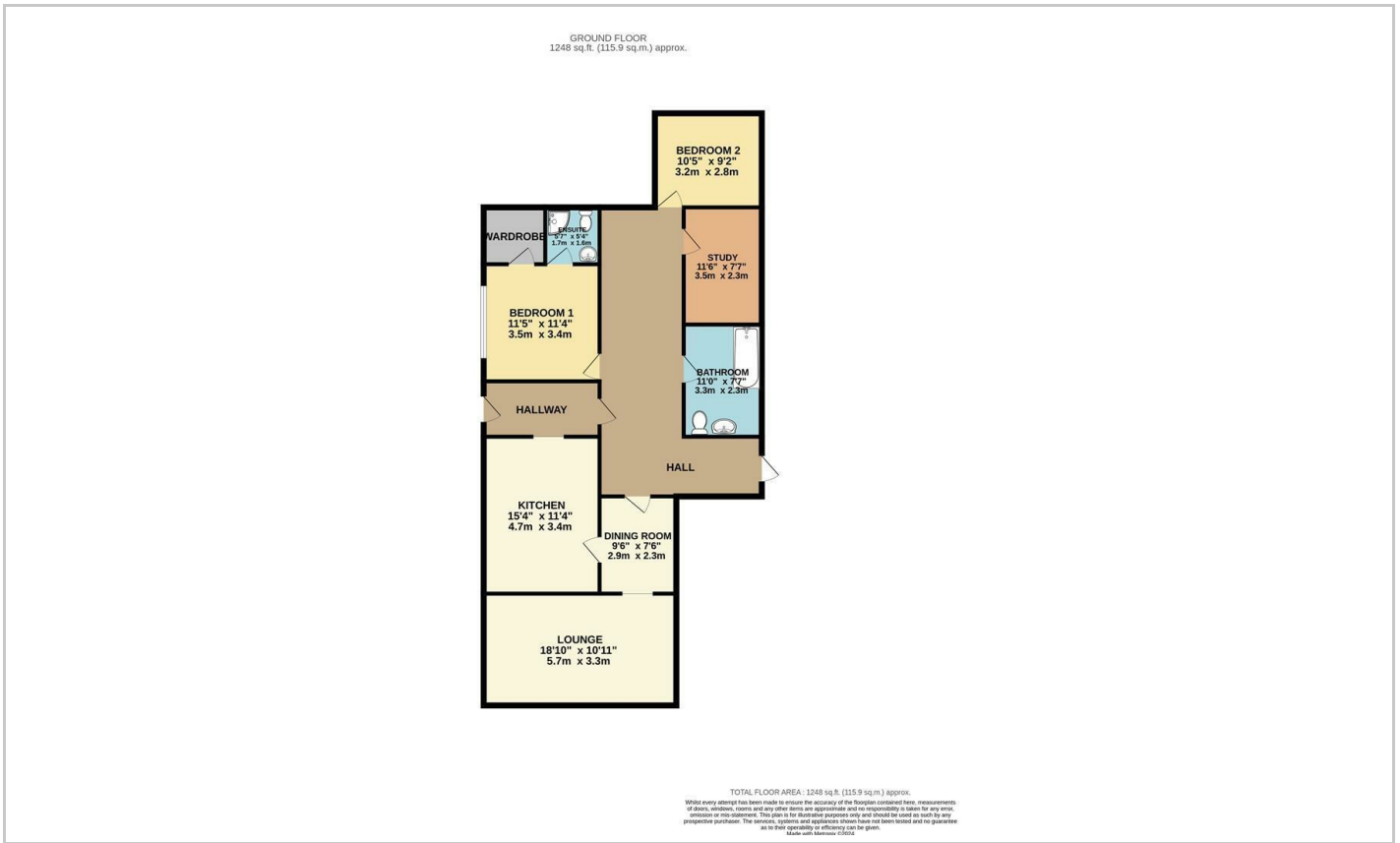
This versatile study is an ideal space for a home office or additional wardrobe storage. The room is well-lit with natural light streaming through a sizable window, creating a pleasant and productive environment. It offers ample extra storage space to suit your needs, whether for office supplies or personal belongings. Designed for functionality and comfort, this room provides a flexible solution for both work and organization.

En-Suite Bathroom

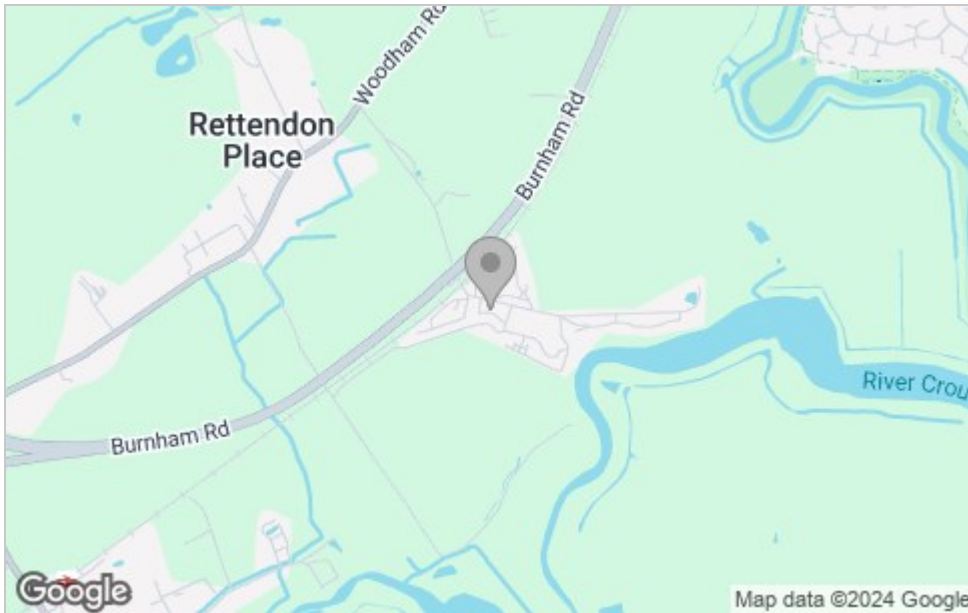
This elegant en-suite bathroom is designed for convenience and comfort. It features a spacious stand-up shower, a modern sink, and a sleek toilet. A window allows natural light to fill the room, creating a bright and welcoming atmosphere. Perfectly integrated into the bedroom, this ensuite offers both functionality and style.



Floor Plan



Area Map



Viewing

Please contact our Hockley Office on 01702 416476 if you wish to arrange a viewing appointment for this property or require further information.

These particulars, whilst believed to be accurate are set out as a general outline only for guidance and do not constitute any part of an offer or contract. Intending purchasers should not rely on them as statements of representation of fact, but must satisfy themselves by inspection or otherwise as to their accuracy. No person in this firm's employment has the authority to make or give any representation or warranty in respect of the property.

11 Main Road, Hockley, Essex, SS5 4QY

Office: 01702 416476 hockley@bearestateagents.co.uk <https://www.bearestateagents.co.uk>

Energy Efficiency Graph

