



Main Road | Hawkwell | Hockley | SS5 4EQ

Guide Price £530,000

**bear**  
*Estate Agents*

**Main Road | Hawkwell**  
**Hockley | SS5 4EQ**  
**Guide Price £530,000**

Guide Price \*£530,000 - £550,000\*

Situated centrally within Hawkwell, this immaculate four-bedroom detached family home offers convenience and comfort within close walking distance to the mainline railway station, shops, and schools. Boasting two reception rooms, including a study and a spacious lounge/diner, the property features a recently fitted luxury kitchen/breakfast room, ideal for modern family living. The entrance hall welcomes you with wood flooring and leads to the study, while the kitchen/breakfast room showcases double glazed windows, Quartz work surfaces, and integrated appliances. Additionally, the ground floor offers a utility room and a cloakroom. Upstairs, the spacious first floor landing provides access to four well-appointed bedrooms, including bedroom one with an en suite, and a family bathroom. Outside, the rear garden boasts a patio area and a artificial grass garden with flower and shrub borders, while the front offers off-street parking for several vehicles leading to the integral garage. With viewing advised, this property presents an ideal family home in a sought-after location.

### **Entrance Hall**

Entrance via a composite entrance door to the entrance hall, featuring stairs to the first floor accommodation. The hall boasts wood flooring, a radiator, and coving to the plastered ceiling.

### **Study**

8'9" x 7'8" (2.67 x 2.34)

The study offers a cozy space with a radiator, plastered ceiling, and several power sockets and CAT 6 Networking. It also provides access to the garage.

### **Luxury Fitted Kitchen/Breakfast Room**

18'2" x 12'0" (5.56 x 3.66 )

Recently fitted, the kitchen/breakfast room features double glazed windows to the front aspect and a double glazed door providing access to the side aspect. It boasts modern high gloss base and eye level units with Quartz work surfaces, integrated appliances, and wood effect flooring.





### Utility Room

9'3" x 5'1" (2.84 x 1.57)

The utility room offers marble effect laminated work surfaces with an inset stainless steel sink drainer unit. It provides space and plumbing for appliances and a fridge freezer.

### Ground Floor Cloakroom

The cloakroom features an obscure double glazed window to the side aspect and a two-piece suite comprising a pedestal wash hand basin with tiled splashback and a low-level WC. It also includes tiled flooring and a plastered ceiling with inset spotlighting.

### Lounge/Diner

21'7" x 11'8" (6.6 x 3.56 )

The spacious lounge/diner boasts a double glazed window to the rear aspect and double glazed French doors providing access to the rear garden. It features a feature fireplace, oak flooring, radiators, and coving to the plastered ceiling.

### Spacious First Floor Landing

The landing includes an obscure double glazed window to the side aspect and access to the loft. It also features an airing cupboard.

### Bedroom One

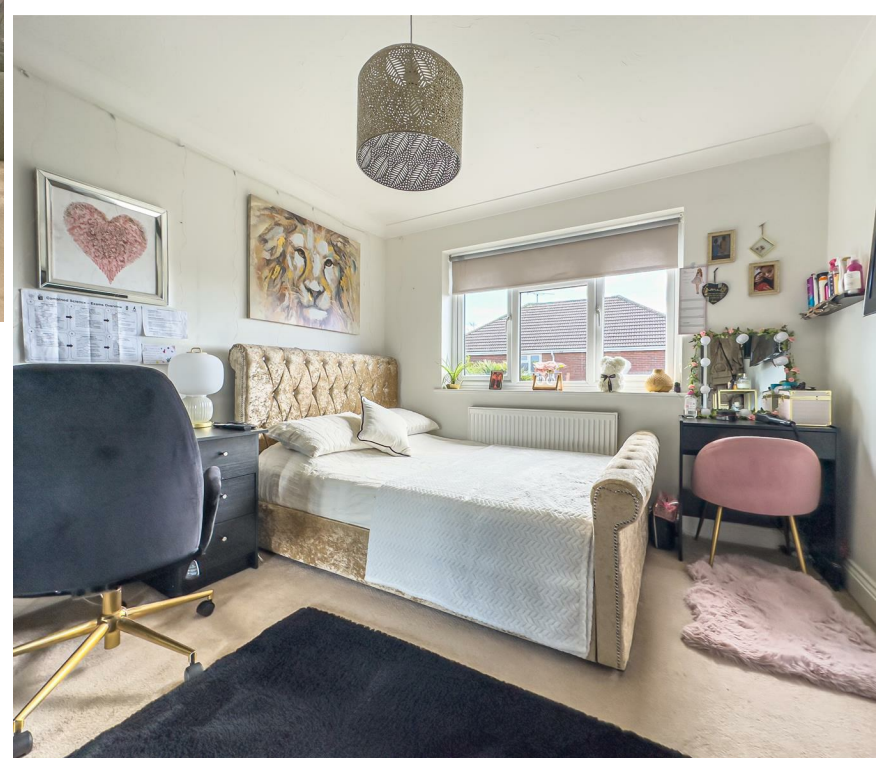
14'4" x 12'9" (4.39 x 3.91 )

Bedroom one showcases a double glazed lead light window to the front aspect, fitted wardrobes, a radiator, and a plastered ceiling. It includes an en suite.

### Ensuite

The en suite features an obscure double glazed window to the side aspect and a three-piece white suite comprising a tiled shower cubicle, pedestal wash hand basin, and low-level WC. It includes tiled flooring and a textured ceiling.





## Bedroom Two

11'8" x 11'1" (3.58 x 3.4 )

Bedroom two offers a comfortable space with a double glazed window to the rear aspect, a TV point, CAT 6 Networking, a radiator, and coving to the ceiling.

## Bedroom Three

11'8" x 10'0" (3.56 x 3.05 )

Bedroom three features a double glazed window to the rear aspect, a TV point, CAT 6 Networking, a radiator, and coving to the ceiling.

## Bedroom Four

9'6" x 9'3" (2.9 x 2.82 )

Bedroom four includes a double glazed window to the front aspect, a radiator, and coving to the ceiling.

## Bathroom

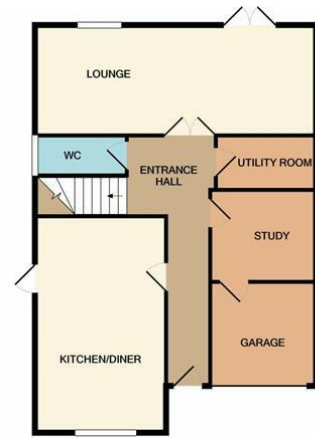
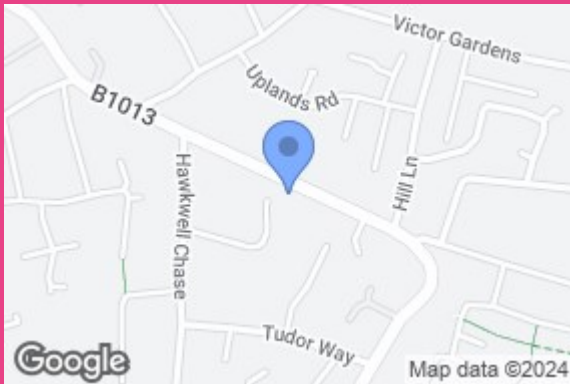
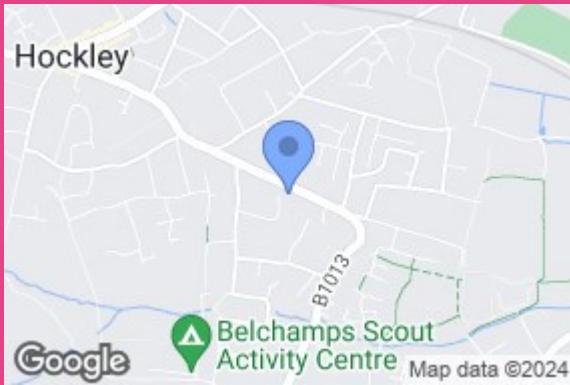
The bathroom boasts an obscure double glazed window to the side aspect and a three-piece suite comprising a panelled bath with a folding shower screen and shower over, inset wash hand basin with vanity storage below, and low-level WC with concealed cistern. It features tiled walls and flooring, and a radiator.

## Rear Garden

45 (13.72m)

The rear garden measures approximately 45ft , featuring a patio area, artificial grass garden with flower and shrub borders, and a large shed. The front offers a block-paved driveway providing off-street parking for several vehicles, leading to the integral garage with an up and over door.





GROUND FLOOR  
APPROX. FLOOR  
AREA 722 SQ.FT.  
(67.1 SQ.M.)



1ST FLOOR  
APPROX. FLOOR  
AREA 725 SQ.FT.  
(67.4 SQ.M.)  
TOTAL APPROX. FLOOR AREA 1447 SQ.FT. (134.4 SQ.M.)

Whilst every attempt has been made to ensure the accuracy of the floor plan contained here, measurements of doors, windows, rooms and any other items are approximate and no responsibility is taken for any error, omission, or mis-statement. This plan is for illustrative purposes only and should be used as such by any prospective purchaser. The services, systems and appliances shown have not been tested and no guarantee as to their operability or efficiency can be given.  
Made with Metropix 62020

Energy Efficiency Rating		Current	Potential
Very energy efficient - lower running costs			
(92 plus) A			
(81-91) B			
(69-80) C		69	80
(55-68) D			
(39-54) E			
(21-38) F			
(1-20) G			
Not energy efficient - higher running costs			
England & Wales		EU Directive 2002/91/EC	

11 Main Road  
Hockley  
Essex  
SS5 4QY  
01702 416476  
hockley@bearestateagents.co.uk  
<https://www.bearestateagents.co.uk>