



Bear Estate Agents are pleased to bring to the market this fantastic opportunity for a large detached self build bungalow. This property benefits from three bedrooms with large plot with an open planning kitchen/ lounge and dining area.

Land:

0.7 Acres.

Services :

The vendor has confirmed the properties next door both benefit from full services but this site is currently not connected. Although interested parties are advised to make their own enquiries to establish the existence and adequacy of such services.

Terms:

The site is available for unconditional offers as planning has been passed.

Planning:

New Park Road

Hockley

£475,000

Realistic Offers Considered



New Park Road



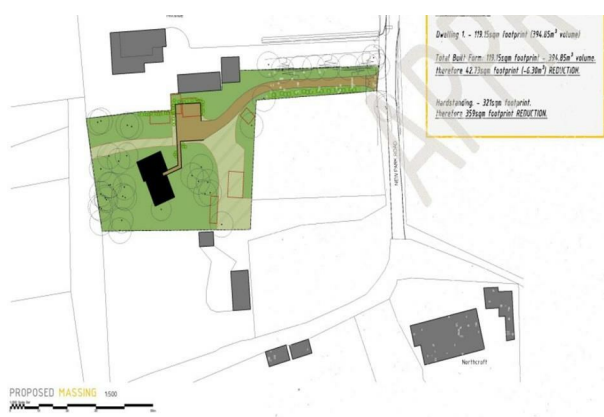
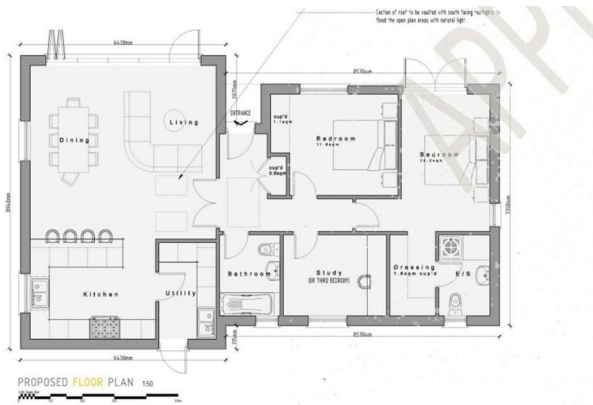
Secondary open-plan living, third bedroom, bathroom, utility designed to make up the rear of the property with limited southerly light through the tree line.

To be finished with dense cedar roof as shown to provide additional shelter.

To be finished with bespoke perforated metal vertical timber cladding to contrast with horizontal stone cladding to allow building to merge within the woodland setting.

Agents Note

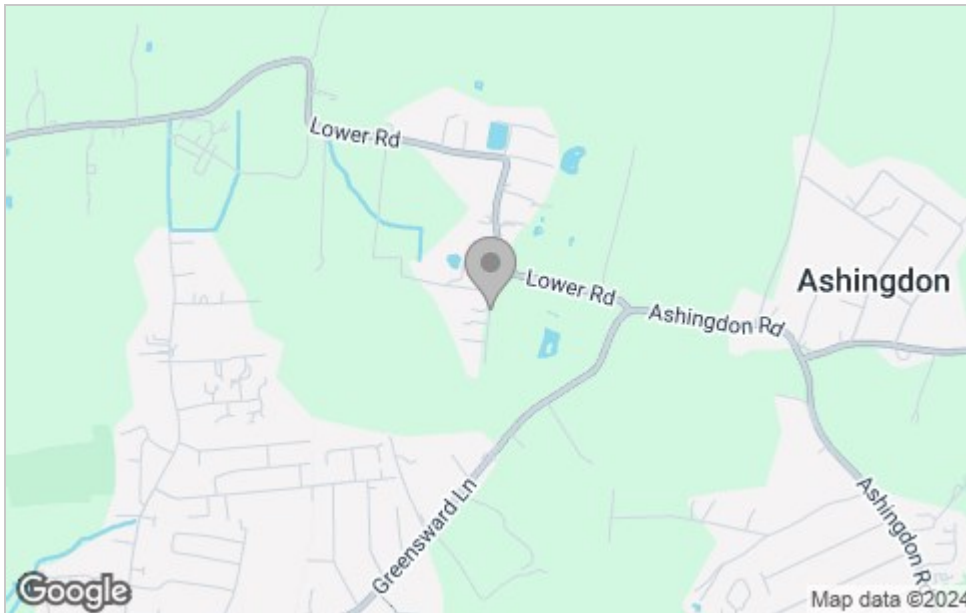
Full planning can be found on Rochford District Council website under reference 23/00084/FUL



Floor Plan



Area Map



Viewing

Please contact our Hockley Office on 01702 416476 if you wish to arrange a viewing appointment for this property or require further information.

These particulars, whilst believed to be accurate are set out as a general outline only for guidance and do not constitute any part of an offer or contract. Intending purchasers should not rely on them as statements of representation of fact, but must satisfy themselves by inspection or otherwise as to their accuracy. No person in this firm's employment has the authority to make or give any representation or warranty in respect of the property.

11 Main Road, Hockley, Essex, SS5 4QY

Office: 01702 416476 hockley@bearestateagents.co.uk <https://www.bearestateagents.co.uk>

Energy Efficiency Graph

