

# bear

*Estate Agents*



Bear Estate Agents are pleased to announce for sale this unique building plot with full planning permission passed to build a two bedroom detached bungalow with parking and garden.

Greensward lane offers a short walk to local picturesque village shops, Hockley train station servicing London Liverpool Street. Internally the plans propose two bedrooms, main bathroom, storage, open plan lounge/kitchen/dining room and a private rear garden.

Land:

Approx 280 Sqm

Services :

The vendor has confirmed the properties next door both benefit from full services but this site is currently not connected. Although interested parties are advised to make their own enquiries to establish the existence and adequacy of such services.

## Greensward Lane

Hockley

**£225,000**

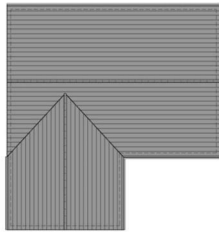
Offers Over



# Greensward Lane



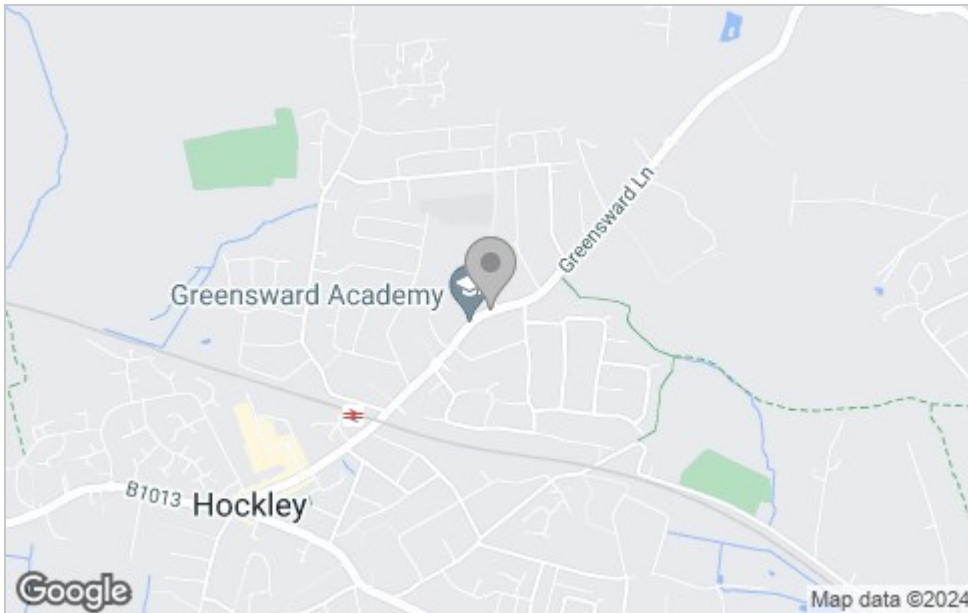




## Floor Plan



## Area Map



## Viewing

Please contact our Hockley Office on 01702 416476 if you wish to arrange a viewing appointment for this property or require further information.

These particulars, whilst believed to be accurate are set out as a general outline only for guidance and do not constitute any part of an offer or contract. Intending purchasers should not rely on them as statements of representation of fact, but must satisfy themselves by inspection or otherwise as to their accuracy. No person in this firm's employment has the authority to make or give any representation or warranty in respect of the property.

11 Main Road, Hockley, Essex, SS5 4QY

Office: 01702 416476 [hockley@bearestateagents.co.uk](mailto:hockley@bearestateagents.co.uk) <https://www.bearestateagents.co.uk>

## Energy Efficiency Graph

