



THE ADDRESS CLUB
PRIVATE CLIENT PROPERTY SALES

Park Road, Hale

Offers in the region of £1.99m



Park Road, Hale

Imposing, detached, 5-bedroom, 5-bathroom property in Hale. Light-filled, spacious rooms overlooking private gardens with potential for renovation. Secure gated driveway, mature trees, double garage and ample parking. Ideal for luxurious living in an exclusive location, sold with no onward chain.

- Imposing, detached 5-bedroom home on sought-after Hale road
- Elevated position with private, gated driveway
- Fantastic family home with lots of potential to update, reconfigure or extend, subject to planning
- Completely private rear garden surrounded by mature trees
- Two large reception rooms with views over the private rear garden
- Separate home office and utility room
- Clive Christian kitchen with island and two dining areas to either end
- Integrated double garage and large driveway with EV charger
- Property has just undergone a comprehensive re-roof with 10 year guarantee
- Available with no onward chain



THE ADDRESS CLUB

PRIVATE CLIENT PROPERTY SALES



GARDEN

Large garden to the rear, laid mainly to lawn with mature borders and patios

GARAGE

Double Garage

Secure integrated double garage with electric doors

DRIVEWAY

6 Parking Spaces

Large secure, gated driveway with space for 6+ cars

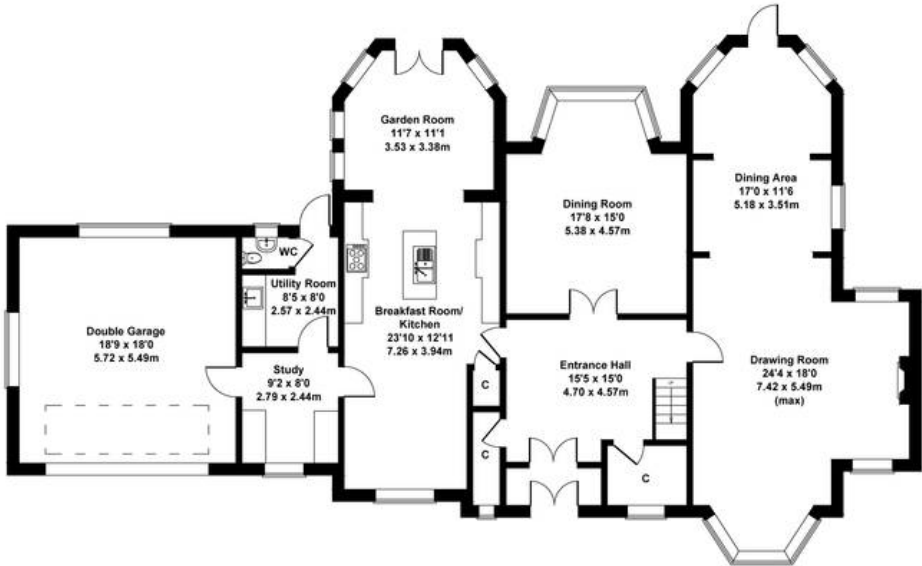






108 Park Road, Hale

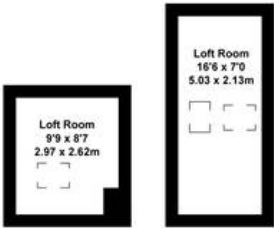
Approximate Gross Internal Area
House - 3991 sq ft - 369.94 sq m
Loft Rooms - 199 sq ft - 18.48 sq m
TOTAL - 4180 sq ft - 388.33 sq m



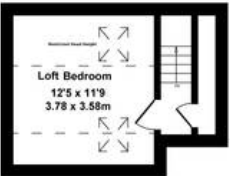
GROUND FLOOR



FIRST FLOOR



LOFT ROOMS



SECOND FLOOR

SKETCH PLAN FOR ILLUSTRATIVE PURPOSES ONLY

All measurements walls, doors, windows, fittings and appliances, their sizes and locations, are approximate only. They cannot be regarded as being a representation by the seller, nor their agent.

Produced by Potterplans Ltd. 2024





















The Address Club

The Polygon, 2 Stamford Road, Bowdon – WA14 2JU

07754076069

amelia@theaddressclub.co.uk

www.theaddressclub.co.uk/

These details are prepared as a general guide only and should not be relied upon as a basis to enter into a legal contract, or to commit expenditure. The Address Club Ltd (14124245) or their associated parties cannot be held liable for the success or failure of taking on any opportunity introduced by them or their associated parties



THE ADDRESS CLUB

PRIVATE CLIENT PROPERTY SALES