



Alderley Park, Nether Alderley

Alderley Edge

Guide Price **£1,450,000**



Alderley Park

Nether Alderley, Macclesfield

Immaculate, private 5-bedroom DETACHED Alderley Park residence, 2540 SQ FT. Backs onto PRIVATE WOODLAND. Luxurious interiors; chandeliers, log burners, bespoke kitchen, and utility room. Stunning rear reception room with bi-folding doors. Principal suite. VIEWING ESSENTIAL!

Council Tax band: G

Tenure: Freehold

EPC Energy Efficiency Rating: B

EPC Environmental Impact Rating: B

- 5 double bedrooms, 3 bathrooms
- Immaculate, detached 2540 SQUARE FEET home
- South-facing private rear garden, backing onto woodlands
- Exquisite interior design
- Bespoke Laura Ashley kitchen
- Sought-after location within prestigious Alderley Park
- Detached double garage
- Electric car charging points
- Freehold





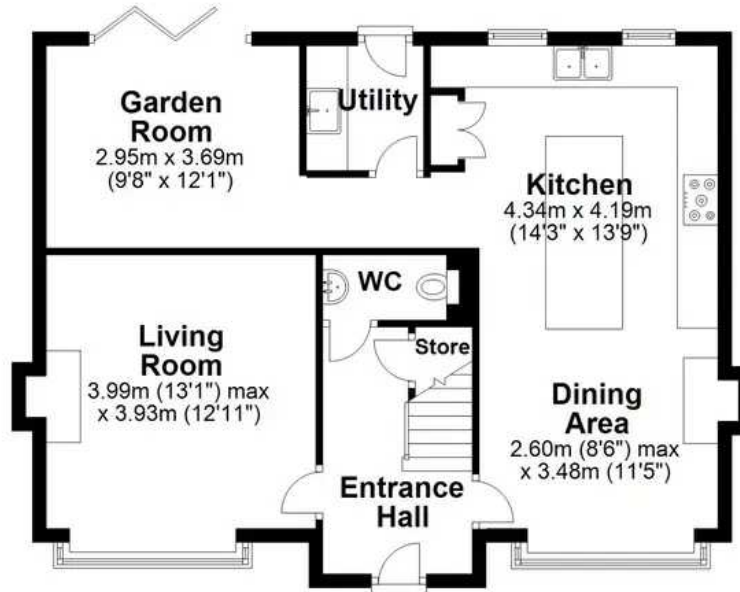




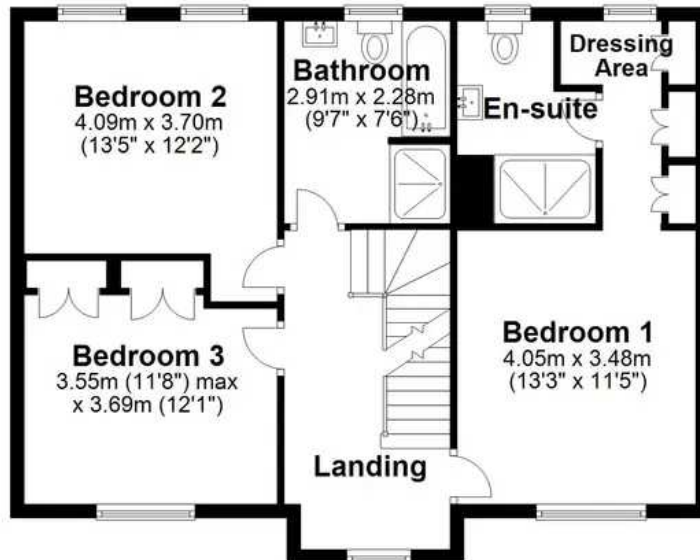




Ground Floor
Approx. 113.0 sq. metres (1216.6 sq. feet)



First Floor
Approx. 70.1 sq. metres (754.6 sq. feet)



Second Floor
Approx. 52.8 sq. metres (568.3 sq. feet)



Total area: approx. 235.9 sq. metres (2539.6 sq. feet)

Measurements of rooms and any other items are approximate and no responsibility is taken for any misstatement. This plan is for illustrative purposes only and should be used as such. Produced by OpenInsight.co.uk
Plan produced using PlanUp.



The Address Club

The Polygon, 2 Stamford Road, Bowdon – WA14 2JU

07754076069 • amelia@theaddressclub.co.uk • www.theaddressclub.co.uk/

These details are prepared as a general guide only and should not be relied upon as a basis to enter into a legal contract, or to commit expenditure. The Address Club Ltd (14124245) or their associated parties cannot be held liable for the success or failure of taking on any opportunity introduced by them or their associated parties