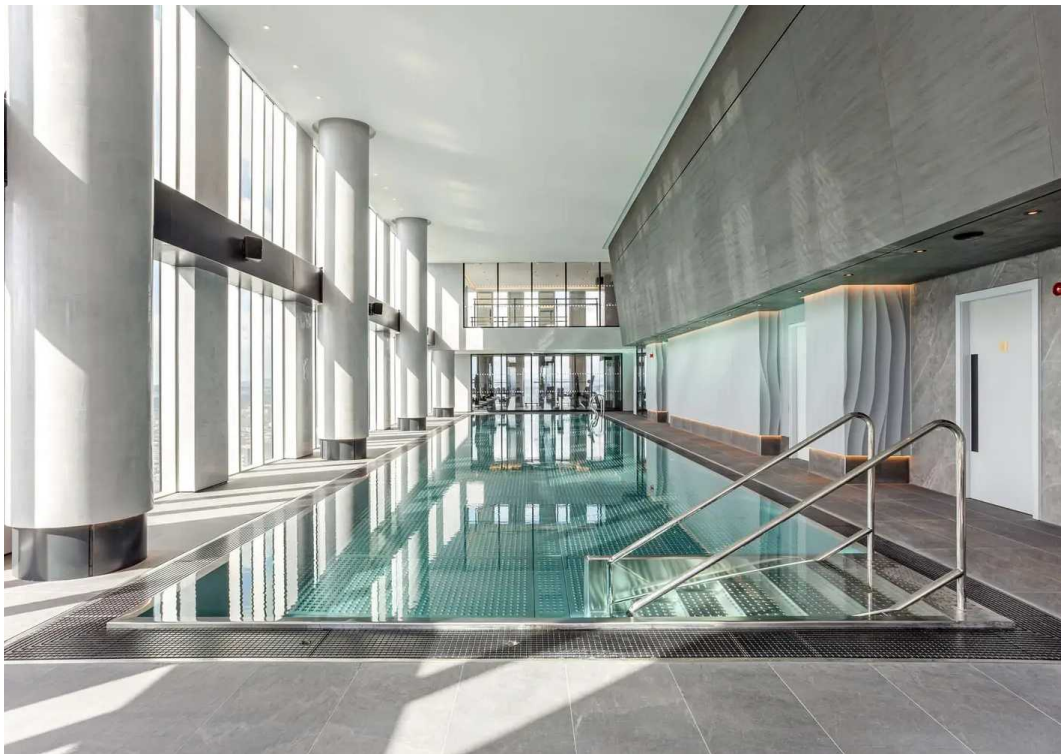


**4306 Elizabeth Tower, Crown Street, Manchester**

**FOR SALE £625K**





## Apt 4306

Elizabeth Tower, Crown Street,  
Manchester

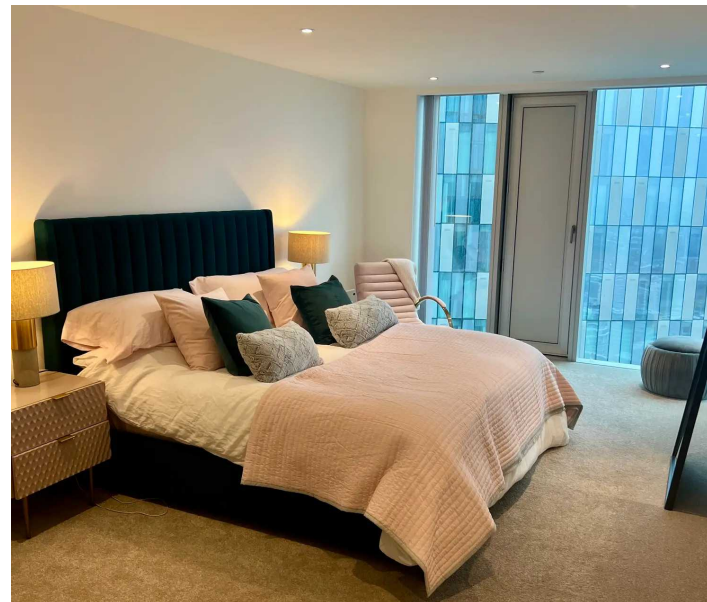
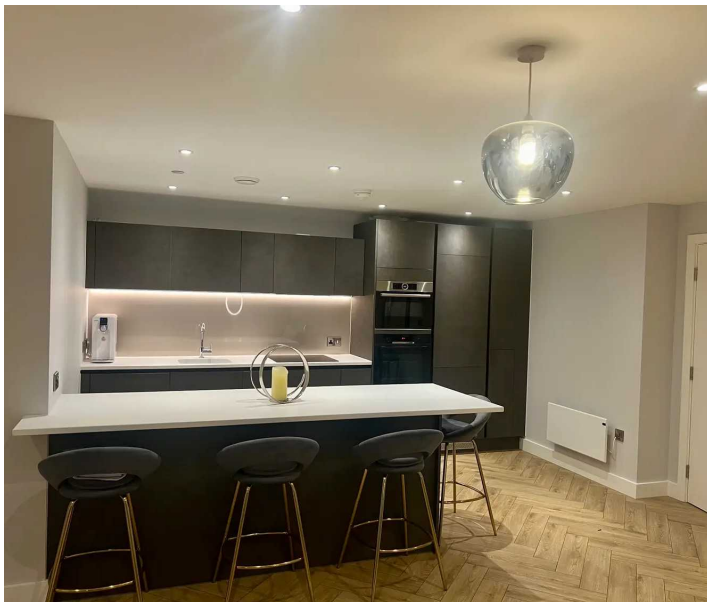
STUNNING 43rd floor 2-bed, 2-bath LUX apartment 1137 sq ft in Elizabeth Tower. Exclusive Residents' facilities including: huge 44th floor swimming pool +24/7 concierge + on-site gym & holistic studio + Royal Gardens terrace + private secure underground car parking space +private dining area

Tenure: Leasehold

EPC Energy Efficiency Rating: B

EPC Environmental Impact Rating: B

- 43rd floor of Elizabeth Tower
- Exclusive access to 44th floor swimming pool, gym & holistic studio
- Two large bedrooms, two bathrooms
- 24/7 concierge
- Open plan living space, creating three reception areas
- Luxury Herringbone flooring
- Dual-aspect corner apartment
- Underground parking space
- Spectacular views







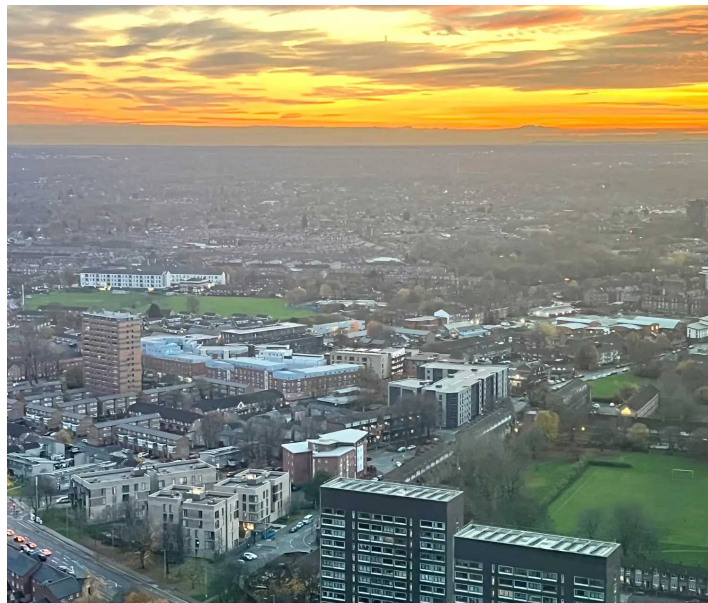
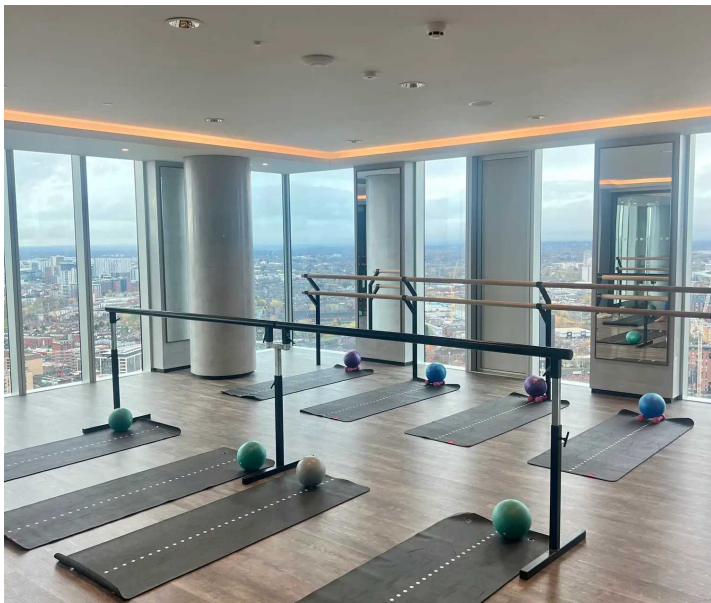
## ROOF TERRACE

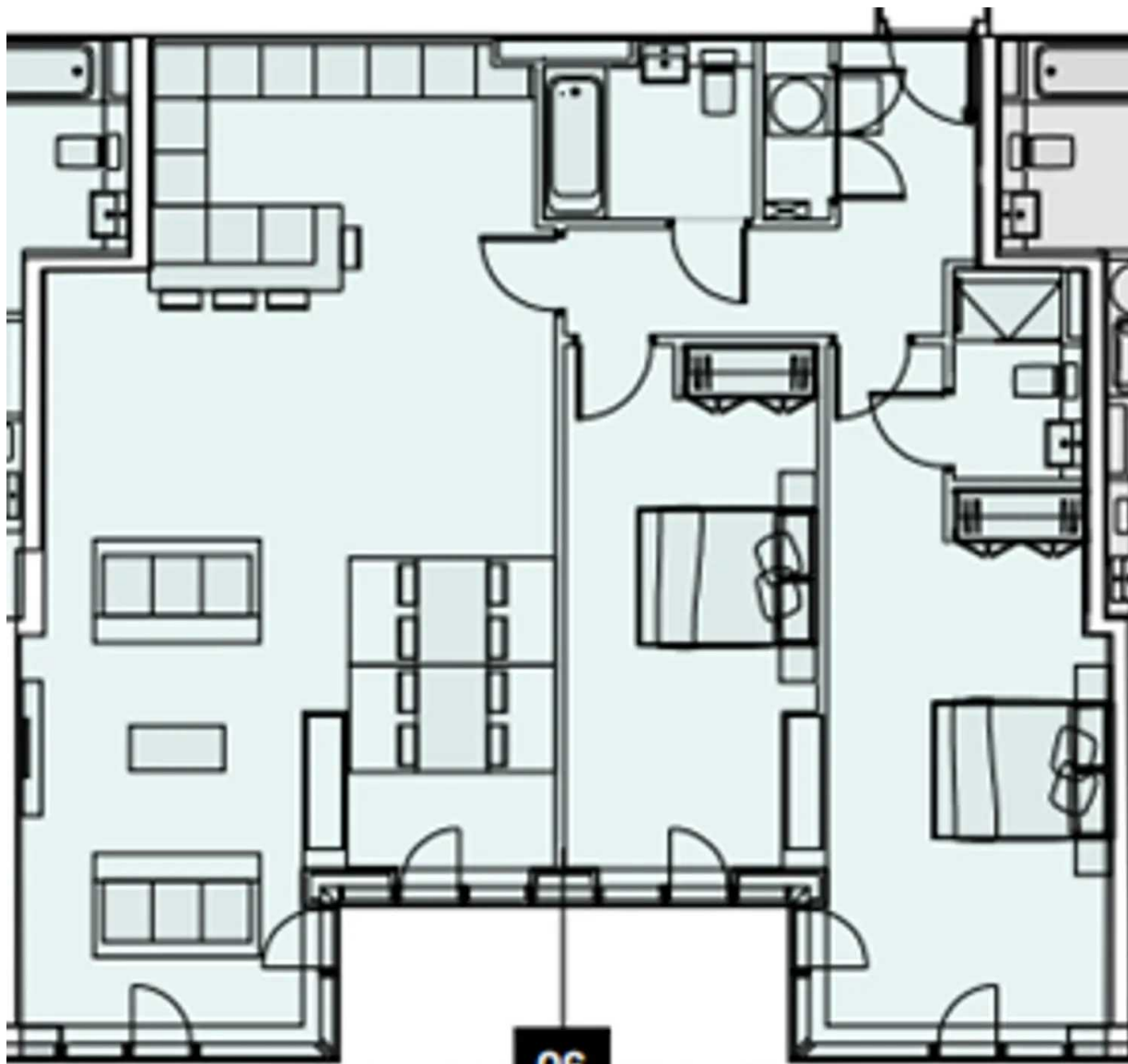
Residents' roof terrace

## SECURE GATED

1 Parking Space

One parking space in the secure underground car park with direct lift access to all floors.

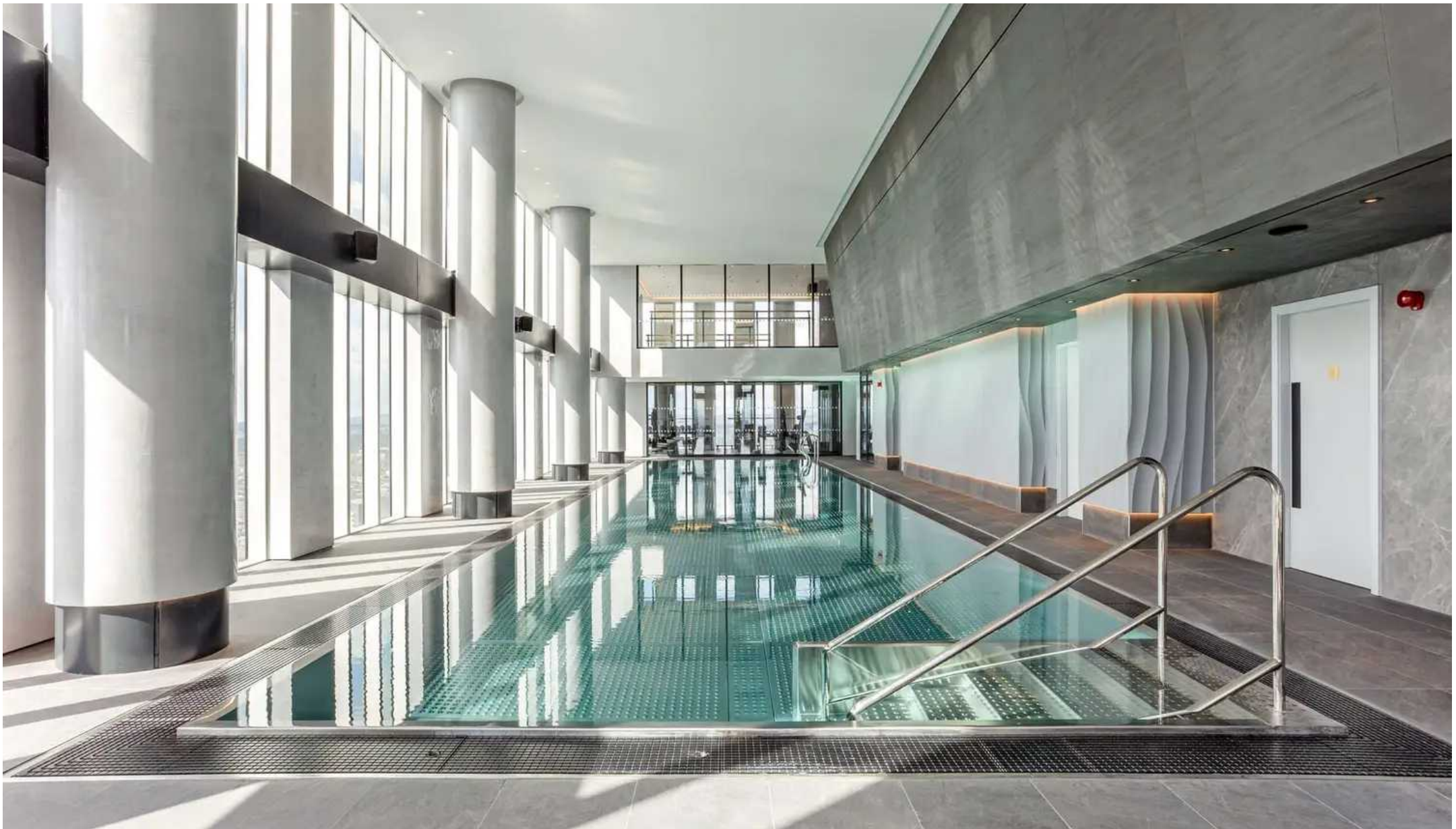




06



Cheshire



## The Address Club

The Polygon, 2 Stamford Road, Bowdon – WA14 2JU

07754076069 • [amelia@theaddressclub.co.uk](mailto:amelia@theaddressclub.co.uk) • [www.theaddressclub.co.uk/](http://www.theaddressclub.co.uk/)

These details are prepared as a general guide only and should not be relied upon as a basis to enter into a legal contract, or to commit expenditure. The Address Club Ltd (14124245) or their associated parties cannot be held liable for the success or failure of taking on any opportunity introduced by them or their associated parties