



1 Drovers Way  
Chipping Sodbury

£699,500





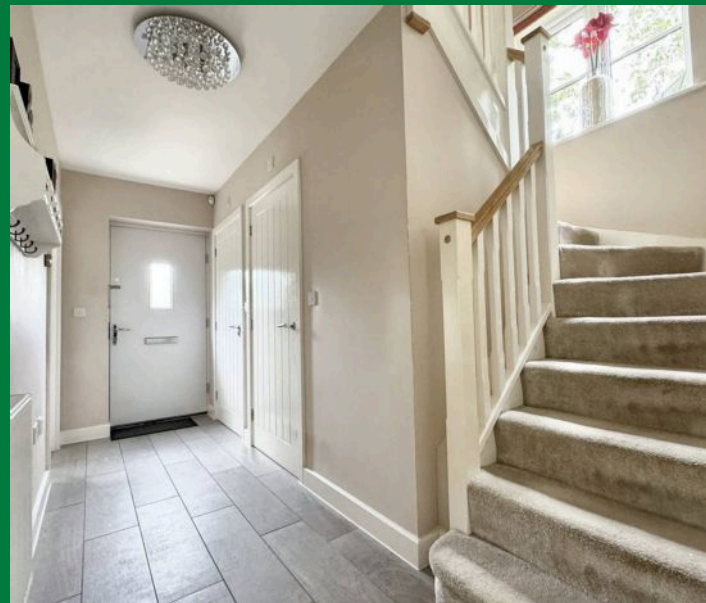


# 1 Drovers Way

Chipping Sodbury, BS37 6FB

Stunning 4 bedroom former show home for the Barnhill development with South facing rear garden and double garage. Situated in the leafy heart of Chipping Sodbury the property has an enviable position occupying one of the largest plots – if not the largest plot, in the vicinity. The spacious family home offers flexible accommodation which includes: entrance hall, cloakroom, lounge, impressive open plan kitchen family room, utility, 4 bedrooms with master ensuite and family bathroom. Above the detached garage is a generous room which has been used as bedroom 5 but could easily be a fantastic work-from-home office or even an annexe..? The enclosed South facing rear garden is a generous size for all the family to enjoy. Additionally, there is driveway parking for 4 vehicles. Unusually available within a such a short walk to the historic High Street, where there is a plethora of shopping, pub restaurants and a thriving social scene.

- Generous Plot
- Impressive Kitchen/Dining/Living Room
- 5 Bedrooms With Master Ensuite
- Double Garage & Driveway For 4 Cars
- Enclosed Garden With Leafy Outlook
- Potential Annexe / Air B&B
- Walking Distance To High Street
- Energy Efficiency Rating C







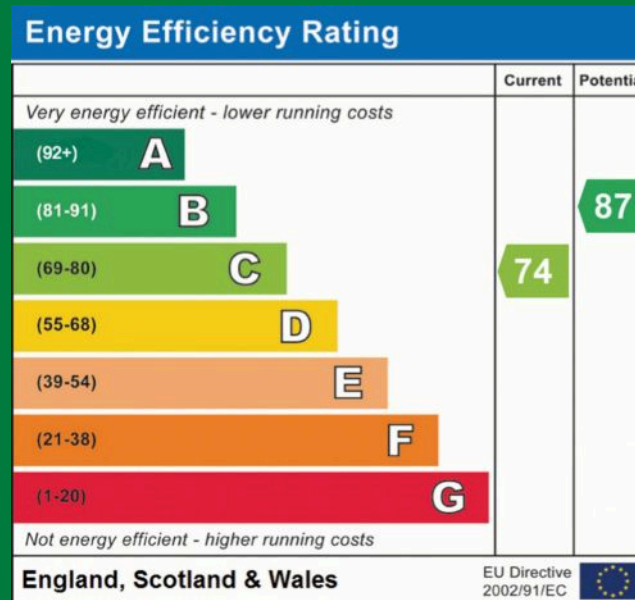
## Location

This property is about a 5-minute walk from Chipping Sodbury High Street and Waitrose, a 5-minute drive from Yate Shopping centre. Chipping Sodbury is a medieval market town dating back to pre-1300s. Nowadays many social activities, clubs and organisations thrive here. There is a Waitrose supermarket and full range of artisan shops, a wide selection of local pubs and restaurants, an award winning bakery and butcher, and a Town Hall events venue. We have a Golf club, tennis, rugby, football and running clubs. Popular Primary and Secondary Schools. Bristol and Bath = 14 miles. M4 J18 = 4 miles. M5 J14 = 8 miles. Yate rail station = 2 miles. Aztec West, Abbeywood and Cribbs Causeway = 7 miles.

Exciting 4 bedroom show home in the leafy Barnhill development. Larger plot with detached double garage, potential for annexe, parking for 4 cars. 4 bedrooms, ensuite, spacious garden, walk to High Street. Council Tax band: D

Tenure: Freehold

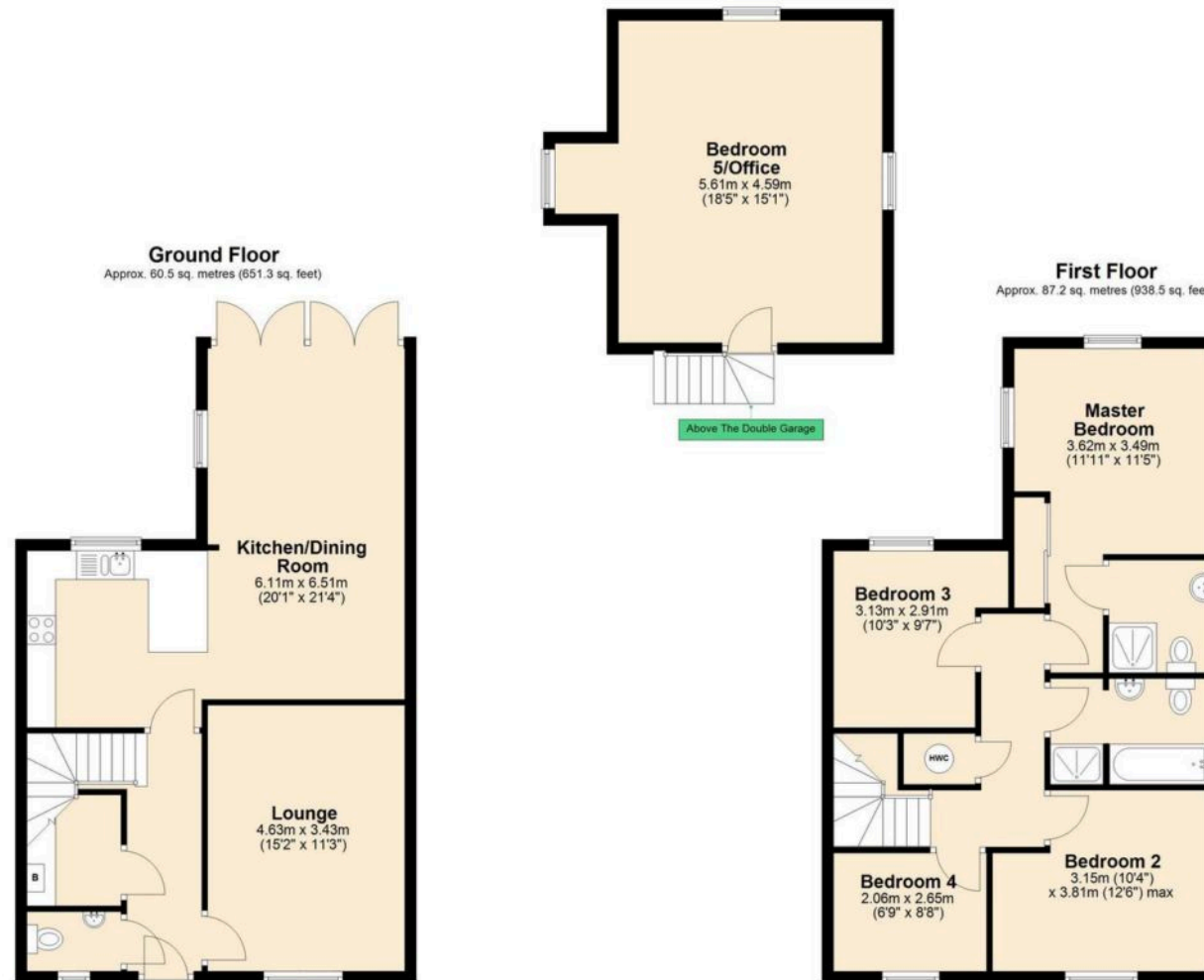
EPC Energy Efficiency Rating: C











Total area: approx. 147.7 sq. metres (1589.8 sq. feet)

Disclaimer:- These particulars are set out as a general guide only and do not constitute any part of an offer or contract.

Details, photographs, measurements, floorplans and distances are given as a guide only and must not be relied upon for the inclusion of any visible fixtures and fittings.

Asking prices, rents, or other figures quoted are believed to be correct at the time of publication. They are presented in good faith but without any responsibility, must not be relied upon as statements or representations of fact, and any affected parties must satisfy themselves by inspection or otherwise as to the correctness of each of them by their solicitor prior to exchange of contracts.

We have not carried out a structural survey. Any services, appliances and fittings have not been tested. We recommend independent specialist advice be taken if in doubt, about these, or any liability for VAT in respect of any transaction relating to this property.

No person in the employment of Country Property has authority to make any representation or warranty whatsoever, in relation to this property. We retain the copyright to all promotional material used to market this property.



The Grange, 73 Broad Street, Chipping Sodbury  
South Gloucestershire, BS37 6AD

**01454 321339**

[www.countryproperty.co.uk](http://www.countryproperty.co.uk)  
[enquiries@countryproperty.co.uk](mailto:enquiries@countryproperty.co.uk)