
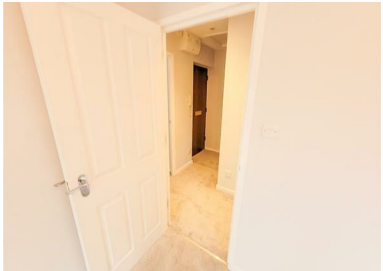


Energy Efficiency Rating		Current	Potential
Very energy efficient - lower running costs			
(92 plus) A			82
(81-91) B			
(69-80) C			
(55-68) D		64	
(39-54) E			
(21-38) F			
(1-20) G			
Not energy efficient - higher running costs			
England & Wales		EU Directive 2002/91/EC 	



WINSTON CLOSE
GREENHITHE DA9 9DG
£1,100 Per month



22 Albert Road, Belvedere, Kent, DA17 5LJ

01322 947 967

sales@mlmestateagents.co.uk
www.mlmestateagents.co.uk

IMPORTANT: we would like to inform prospective purchasers that these sales particulars have been prepared as a general guide only. A detailed survey has not been carried out, nor the services, appliances and fittings tested. Room sizes should not be relied upon for furnishing purposes and are approximate. If floor plans are included, they are for guidance only and illustration purposes only and may not be to scale. If there are any important matters likely to affect your decision to buy, please contact us before viewing the property.





This beautiful 1 bedroom top floor flat is available for immediate rent and is situated in a prime location close to the famous Bluewater shopping mall. You'll be able to enjoy easy access to a wide variety of shops, restaurants and bars, making it the perfect spot for those who love to indulge in retail therapy or socialise with friends and family.

Located just a short distance from Greenhithe /stone crossing train station and Darent Valley Hospital, this flat offers an unparalleled level of convenience and ease of access. Whether you need to commute to work or seek medical care, you'll be close by.

Inside, the flat is in impeccable condition, offering a clean, modern and sophisticated living space that is sure to impress. The open plan kitchen/lounge diner is perfect for entertaining guests or simply relaxing after a long day, while the bedroom is spacious and comfortable, providing you with a peaceful sanctuary to retire to at night.

The flat is generally a great size throughout, ensuring that you'll have plenty of room to move around and make it your own. You'll also benefit from an allocated parking space, providing you with peace of mind that your vehicle is always safe and secure.

All of this is, of course, subject to referencing, but if you're looking for a beautiful and well-maintained flat in an excellent location, then this is definitely the one for you. Don't miss out on the opportunity to see it for yourself - come along to the open house on Saturday 29th April by appointment only, and prepare to fall in love!

1 BEDROOMS • null RECEPTION ROOMS • 1 BATHROOMS

WINSTON CLOSE

GREENHITHE DA9 9DG

- 1 Bedroom Flat
- Purpose Built Top Floor
- Council Tax Band B
- EPC D
- Newly Decorated
- Available Early May