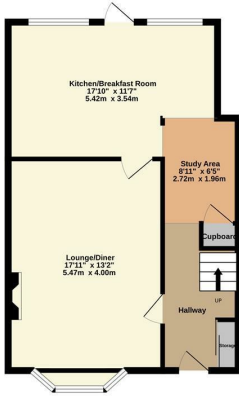


Energy Efficiency Rating		Current	Potential
Very energy efficient - lower running costs			
(92 plus) A			79
(81-91) B			
(69-80) C			
(55-68) D		66	
(39-54) E			
(21-38) F			
(1-20) G			
Not energy efficient - higher running costs			
England & Wales		EU Directive 2002/91/EC	

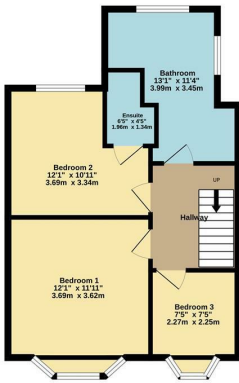


GASSON ROAD
SWANSCOMBE DA10 0HX
Guide price £400,000

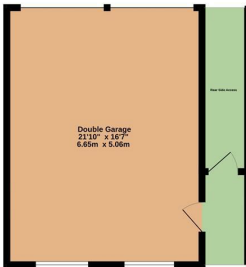
Ground Floor
579 sq.ft. (53.9 sq.m.) approx.



1st Floor
523 sq.ft. (48.6 sq.m.) approx.



Ground Floor
362 sq.ft. (33.6 sq.m.) approx.



TOTAL FLOOR AREA: 1454 sq.ft. (135.1 sq.m.) approx.
Made with Metropix ©2025



£400,000-£425,000

This spacious 3-bedroom family home is a fantastic find, offering generous living space, modern conveniences, and an excellent location close to Bluewater Shopping Mall, Swanscombe Train Station and Ebbsfleet International with speedy links to London.

Beautifully extended to the rear, the home now boasts a bright and airy kitchen/diner, perfect for entertaining or enjoying family meals. The spacious accommodation continues throughout, featuring a comfortable lounge, an upstairs family bathroom, and a private en-suite shower room in the back bedroom. There is also a separate study area.

Externally, the property benefits from a large detached garage with rear access, ideal for storage or a workshop, along with a driveway to the front for convenient off-street parking.

Positioned near Manor Community Primary School and Ebbsfleet Academy, this home is ideal for families. With excellent transport links and easy access to local amenities, this is a must-see property.

3 BEDROOMS • 1 RECEPTION ROOMS • 1 BATHROOMS

GASSON ROAD

SWANSCOMBE DA10 0HX

- 3 BEDROOM FAMILY HOME
- UPSTAIRS BATHROOM AND EN SUITE SHOWER ROOM
- LARGE DETACHED GARAGE WITH REAR ACCESS
- EXTENDED TO THE KITCHEN/SEPARATE STUDY AREA
- SPACIOUS ACCOMMODATION THROUGHOUT
- DRIVEWAY TO THE FRONT
- CLOSE TO SWANSCOMBE TRAIN STATION/EBBSFLEET INTERNATIONAL AND BLUEWATER SHOPPING MALL
- COUNCIL TAX BAND B
- 1454 SQ FT
- EPC D

