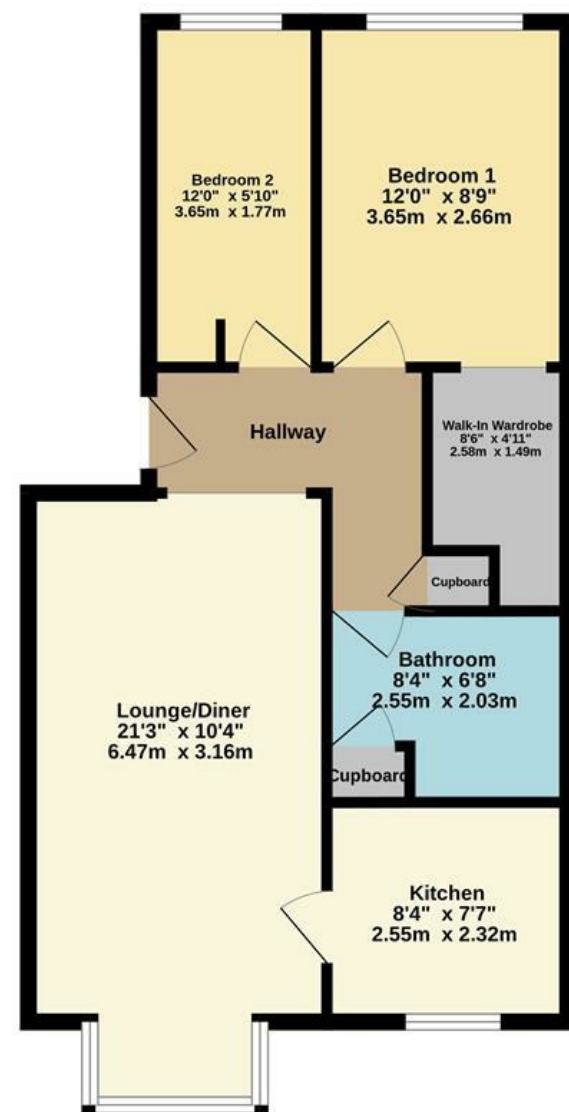


Top Floor
598 sq.ft. (55.6 sq.m.) approx.



TOTAL FLOOR AREA : 598 sq.ft. (55.6 sq.m.) approx.
Made with Metropix ©2025



22 Albert Road, Belvedere, Kent, DA17 5LJ

01322 947 967

sales@mlmestateagents.co.uk
www.mlmestateagents.co.uk

Energy Efficiency Rating		
	Current	Potential
Very energy efficient - lower running costs		
(92 plus) A		
(81-91) B		
(69-80) C	72	79
(55-68) D		
(39-54) E		
(21-38) F		
(1-20) G		
Not energy efficient - higher running costs		
England & Wales	EU Directive 2002/91/EC	



BISHOPS COURT
GREENHITHE DA9 9PX
Guide price £230,000



IMPORTANT: we would like to inform prospective purchasers that these sales particulars have been prepared as a general guide only. A detailed survey has not been carried out, nor the services, appliances and fittings tested. Room sizes should not be relied upon for furnishing purposes and are approximate. If floor plans are included, they are for guidance only and illustration purposes only and may not be to scale. If there are any important matters likely to affect your decision to buy, please contact us before viewing the property.





****Guide Price £230,000 - £250,000****

****Video Walkthrough****

This immaculate two-bedroom top-floor flat in Bishops Court, offers modern living in a sought-after location. Finished to an excellent standard, the property is perfect for first-time buyers, professionals, or investors looking for a stylish and convenient home.

The spacious lounge and dining area provide a bright and inviting space to relax and entertain, while the modern kitchen is fully fitted with appliances, including a fridge freezer, dishwasher and washing machine. Both bedrooms are well-proportioned, with the main bedroom benefiting from a walk-in wardrobe. The contemporary bathroom adds to the appeal of this beautifully maintained flat.

Residents will appreciate the convenience of an allocated parking space, ensuring easy access at all times. The location is ideal, with Bluewater Shopping Centre just minutes away, offering an excellent selection of shops, restaurants, and entertainment options. There are also several well-regarded schools nearby, making this an attractive choice for families.

Transport links are excellent, with Greenhithe and Stone Crossing railway stations providing direct services into London. The nearby A2 and M25 offer easy access to surrounding areas, while local bus routes ensure great connectivity.

This stunning flat is ready to move into and offers a fantastic opportunity for those looking for a stylish and well-located home.

2 BEDROOMS • 1 RECEPTION ROOMS • 1 BATHROOMS

BISHOPS COURT

GREENHITHE DA9 9PX

- Two Bedroom First Floor Flat
- Good Condition Throughout
- Lounge/Diner
- Fitted Appliances
- Allocated Parking Space
- Close To Bluewater Shopping Centre
- 0.3 Miles To Stone Crossing Station
- EPC - C72
- Council Tax Band C
- Ideal First Home Or Investment

