



100 Lowther Street, Penrith, CA11 7UW

Guide price £270,000





100 Lowther Street

Penrith, CA11 7UW

- Sandstone Property Set Over 3 Floors
- 2 Reception Rooms
- Walking Distance to Penrith Town Centre
- Located in the New Streets Conservation Area
- Stunning Fell Views
- 4 Bedrooms & Bathroom
- Lovely Garden with Stone Outhouses
- Close to Amenities & Facilities
- In Need of Renovation
- Offered For Sale with No Onward Chain

Located in the New Streets conservation area of Penrith, this handsome three-storey Victorian terrace is ready for its next chapter. Whilst in need of renovation, this substantial period property offers the perfect canvas for creating a magnificent family home in a highly sought-after location.

Behind its classic sandstone façade, the generous accommodation spans three floors and retains many original features. The ground floor welcomes you with a spacious hallway leading to two well-proportioned reception rooms and a kitchen. The upper floors house five bedrooms, including four doubles and a versatile fifth room perfect for a home office, dressing room, or potential en-suite, a bathroom and a WC.

The private rear garden is a particular highlight, offering a blank canvas for outdoor living with two established patio areas, a practical store room, and a lawn which is accessible via the kitchen or the side gate.

This fantastic property sits less than half a mile from Penrith town centre and is in close proximity to schools, the railway and bus station, shops, restaurants, healthcare and sports facilities, the M6 Motorway and Lake District National Park.

Early viewing is essential to appreciate the scope and potential of this substantial family home.

Guide price £270,000



Entrance Hall

Lounge 13'2" x 12'7" (4.03 x 3.86)

Dining Room 13'8" x 12'7" (4.17 x 3.84)

Kitchen 9'10" x 8'9" (3.00 x 2.68)

WC

Bathroom 5'8" x 6'0" (1.75 x 1.83)

Bedroom One 9'8" x 16'7" (2.96 x 5.06)

Bedroom Two 10'1" x 12'8" (3.08 x 3.88)

Bedroom Three 10'1" x 12'7" (3.08 x 3.84)

Bedroom Four 8'3" x 9'6" (2.54 x 2.91)

Bedroom 5/Study 10'10" x 8'7" (3.31 x 2.63)





Outside

The front door is approached by sandstone steps with a small walled lawn. An alley to the side gives external access to the rear of the property please note the next door neighbour retains a right of access. There is a stone patio with steps leading up to a garden mainly laid to lawn. At the end of the garden there is two stone stores.

Please Note

These particulars, whilst believed to be accurate, are set out for guidance only and do not constitute any part of an offer or contract - intending purchasers or tenants should not rely on them as statements or representations of fact but must satisfy themselves by inspection or otherwise as to their accuracy. No person in the employment of Lakes Estates has the authority to make or give any representation or warranty in relation to the property. All mention of appliances / fixtures and fittings in these details have not been tested and therefore cannot be guaranteed to be in working order.

Services

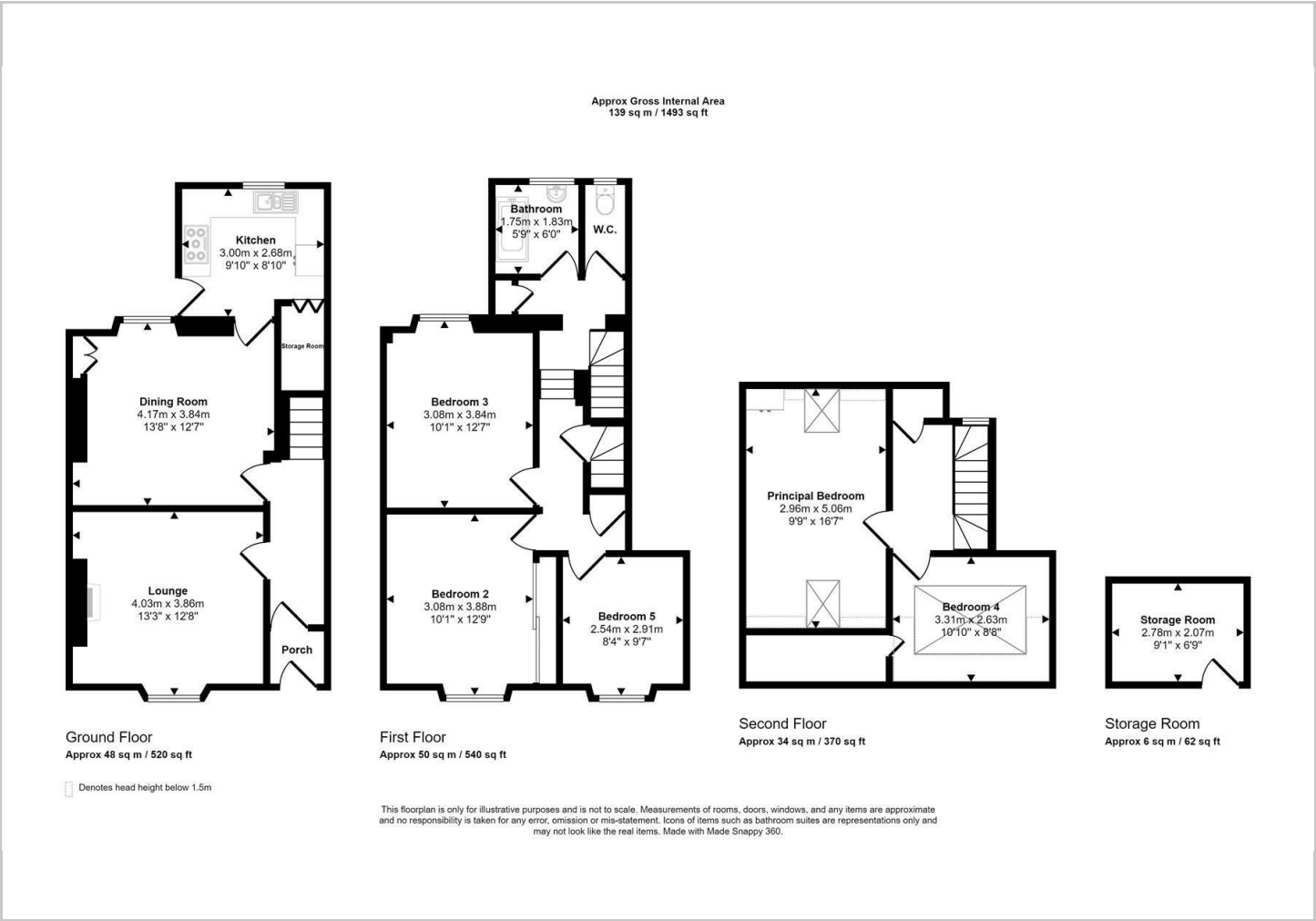
Mains gas, electricity, water and drainage are connected.

Directions

From Penrith town centre, head North on Lowther Street. The property is on the right-hand side mid way up and can be identified by a Lakes Estates 'For Sale' sign.



Floor Plans



Viewing

Please contact our Lakes Estates Office on 01768 639300 if you wish to arrange a viewing appointment for this property or require further information.

The particulars are set out as a general outline only for the guidance of intended purchasers or lessees, and do not constitute, any part of a contract. Nothing in these particulars shall be deemed to be a statement that the property is in good structural condition or otherwise nor that any of the services, appliances, equipment or facilities are in good working order. Purchasers should satisfy themselves of this prior to purchasing.

Penrith,
Tel: 01768 639300 Email: office@lakesestates.co.uk <https://www.lakesestates.co.uk>

Location Map



Energy Performance Graph

