



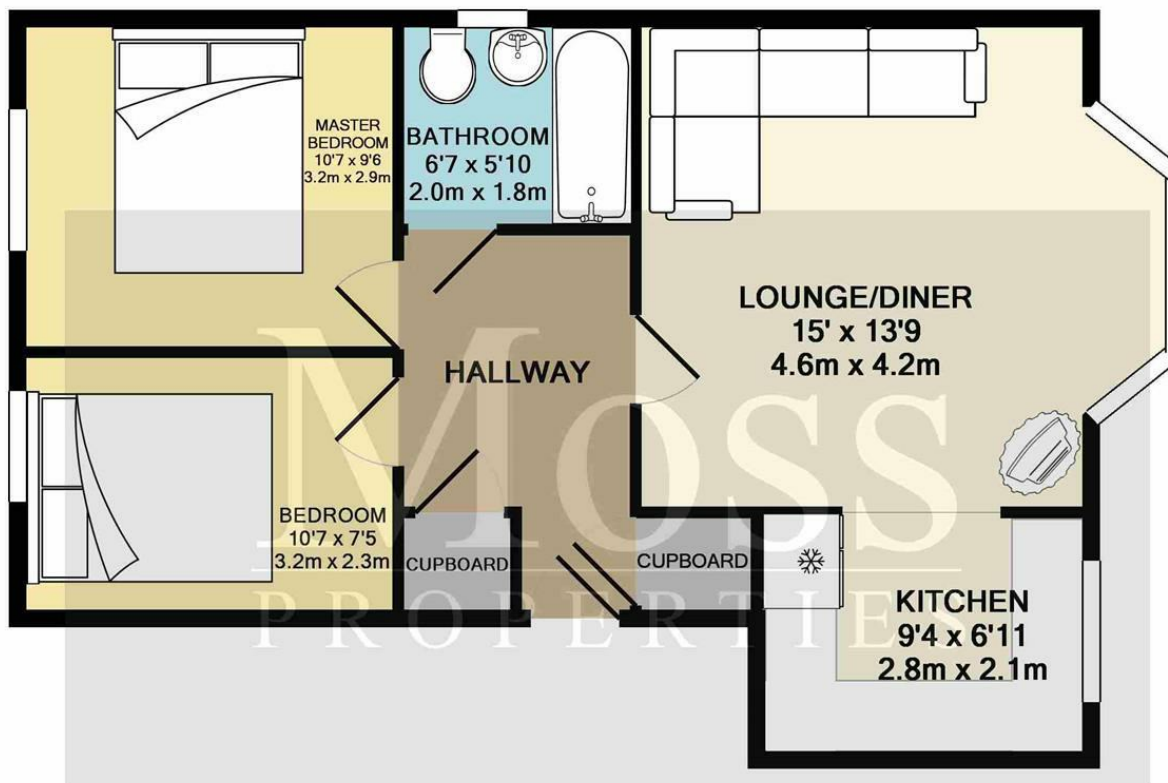
2 Bed  
Apartment  
located in  
Armthorpe Road

£750 PCM



**Moss**  
PROPERTIES

DIRECTIONS



CONTACT

White Rose Way  
Doncaster  
South Yorkshire

E: leads@mossprm.co.uk  
T: 01302 730077  
www.mossprm.co.uk

TOTAL APPROX. FLOOR AREA 552 SQ.FT. (51.2 SQ.M.)

Whilst every attempt has been made to ensure the accuracy of the floor plan contained here, measurements of doors, windows, rooms and any other items are approximate and no responsibility is taken for any error, omission, or mis-statement. This plan is for illustrative purposes only and should be used as such by any prospective purchaser. The services, systems and appliances shown have not been tested and no guarantee as to their operability or efficiency can be given

Made with Metropix ©2017

Energy Efficiency Rating		
	Current	Potential
Very energy efficient - lower running costs		
(92 plus) A		
(81-91) B		
(69-80) C		
(55-68) D		
(39-54) E		
(21-38) F		
(1-20) G		
Not energy efficient - higher running costs		
	78	80

EU Directive 2002/91/EC

England & Wales

Moss  
PROPERTIES