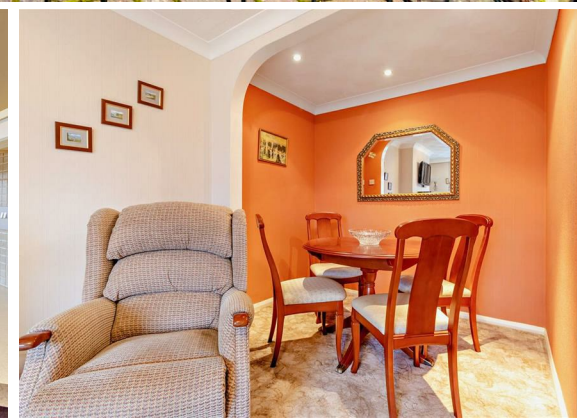




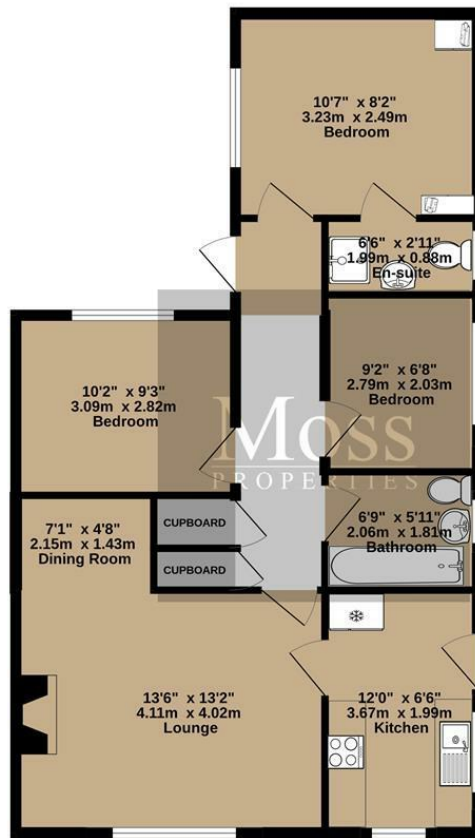
3 Bed  
Bungalow - Semi  
Detached  
located in  
Armthorpe

Guide Price £210,000



**Moss**  
PROPERTIES

GROUND FLOOR  
673 sq.ft. (62.5 sq.m.) approx.



TOTAL FLOOR AREA : 673 sq.ft. (62.5 sq.m.) approx.

Whilst every attempt has been made to ensure the accuracy of the floorplan contained here, measurements of doors, windows, rooms and any other items are approximate and no responsibility is taken for any error, omission or mis-statement. This plan is for illustrative purposes only and should be used as such by any prospective purchaser. The services, systems and appliances shown have not been tested and no guarantee as to their operability or efficiency can be given.  
Made with Metropix ©2024

Energy Efficiency Rating		
	Current	Potential
Very energy efficient - lower running costs		
(92 plus) <b>A</b>		
(81-91) <b>B</b>		
(69-80) <b>C</b>		
(55-68) <b>D</b>		
(39-54) <b>E</b>		
(21-38) <b>F</b>		
(1-20) <b>G</b>		
Not energy efficient - higher running costs		
England & Wales	EU Directive 2002/91/EC	

DIRECTIONS

CONTACT

White Rose Way  
Doncaster  
South Yorkshire

E: leads@mossppm.co.uk  
T: 01302 730077  
www.mossppm.co.uk

**Moss**  
PROPERTIES