



Church Hill, Caterham, CR3 6SD

Offers in excess of £300,000



# PROPERTY SUMMARY

## OVERVIEW

Monochrome Homes presents this well-kept two-bedroom maisonette. The property holds two double bedrooms, a living room, a separate kitchen and a family bathroom, also including a private garden, garage and off-street parking.

### ACCOMODATION

This maisonette is beautifully presented with a modern finish. The property is set on a private road in Caterham. This home holds two spacious double bedrooms, a generous living room, a family bathroom and a separate kitchen with an outlook into the garden. The property features a lovely private garden, off-street parking and a garage. This home is bright and airy throughout.

### LOCATION

The property is walking distance to Caterham Valley, and amenities such as high street shops, library, restaurants and pubs. Caterham offers a comprehensive range and selection of shops including two supermarkets and mainline train station. The area is close to open countryside whilst the motorway network can be accessed via junction 6 off the M25 at Godstone. Direct train services to London Bridge and Victoria are from Caterham. The A22 offers easy access back into London while the M25/M23 provide fantastic commuting links to Gatwick and the South East. Nearby you will find stunning countryside walks across Coulsdon Common and Happy Valley, a true depiction of the Great British countryside.

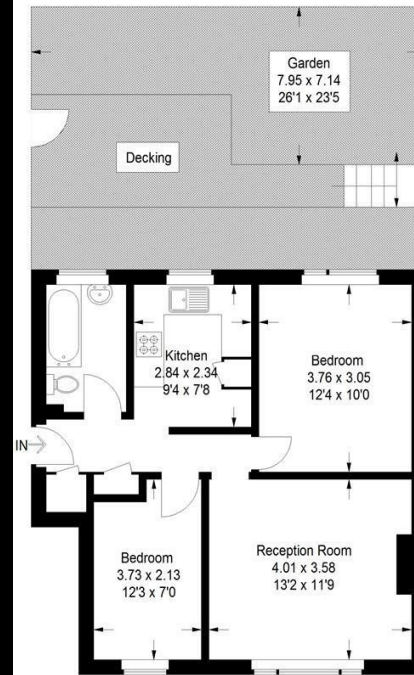
### DISCLAIMER

"These details are prepared as a general guide only, and should not be relied upon as a basis to enter into a legal contract, or to commit expenditure. An interested party should consult their own surveyor, solicitor or other professionals before committing themselves to any expenditure or other legal commitments.

If any interested party wishes to rely upon any information from the agent, then a request should be made and specific written confirmation can be provided. The Agent will not be responsible for any verbal statement made by any member of staff, as only a specific written confirmation should be relied upon. The Agent will not be responsible for any loss other than when specific written confirmation has been requested."

## The Hill, CR3

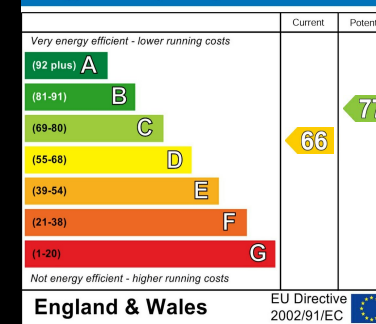
Approximate Gross Internal Area  
52.1 sq m / 561 sq ft



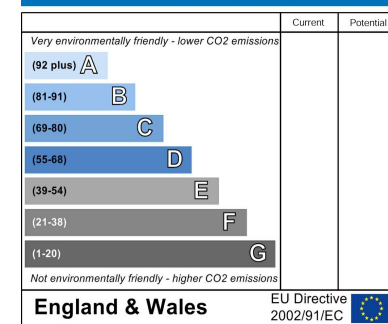
This plan is for layout guidance only. Not drawn to scale unless stated. Windows and door openings are approximate. Whilst every care is taken in the preparation of this plan, please check all dimensions, shapes and compass bearings before making any decisions reliant upon them. (ID1116328)



### Energy Efficiency Rating



### Environmental Impact (CO<sub>2</sub>) Rating



5C HIGH STREET, CATERHAM, SURREY, CR3 5UE

T: 01737 400 096 | E: HELLO@MONOCHROMEHOMES.CO.UK | MONOCHROMEHOMES.CO.UK