



1 Albert Basin Way, London, E16 2QN

£375,000



1 Albert Basin Way, London, E16 2QN

£375,000

Barrain London presents to the market this large 2 bedroom flat located in the vibrant Gallions Reach waterside development. In excellent condition throughout, this is an ideal choice for commuting professionals seeking a comfortable home with lockside views and anyone who needs to be very well connected to other points in London. An ideal choice for investors, also! Custom House (Elizabeth Line) is 8 minutes, Canary Wharf is 20 minutes, Bank is 30 Minutes, Baker Street is 36 minutes!

A high standard of modern living and convenience awaits the new owner: the impressive 845 square feet of living and sleeping space, includes two double bedrooms, two bathrooms (one ensuite) and a very well-proportioned lounge/diner opening onto a modern stylish fully integrated kitchen. The property benefits from a full-width terrace balcony.

You will enjoy walking along the waterfront; you will value the short walk to the station.

**** ESW1 Cladding Compliant

Call Barrain London today to arrange your viewing.

Key Features

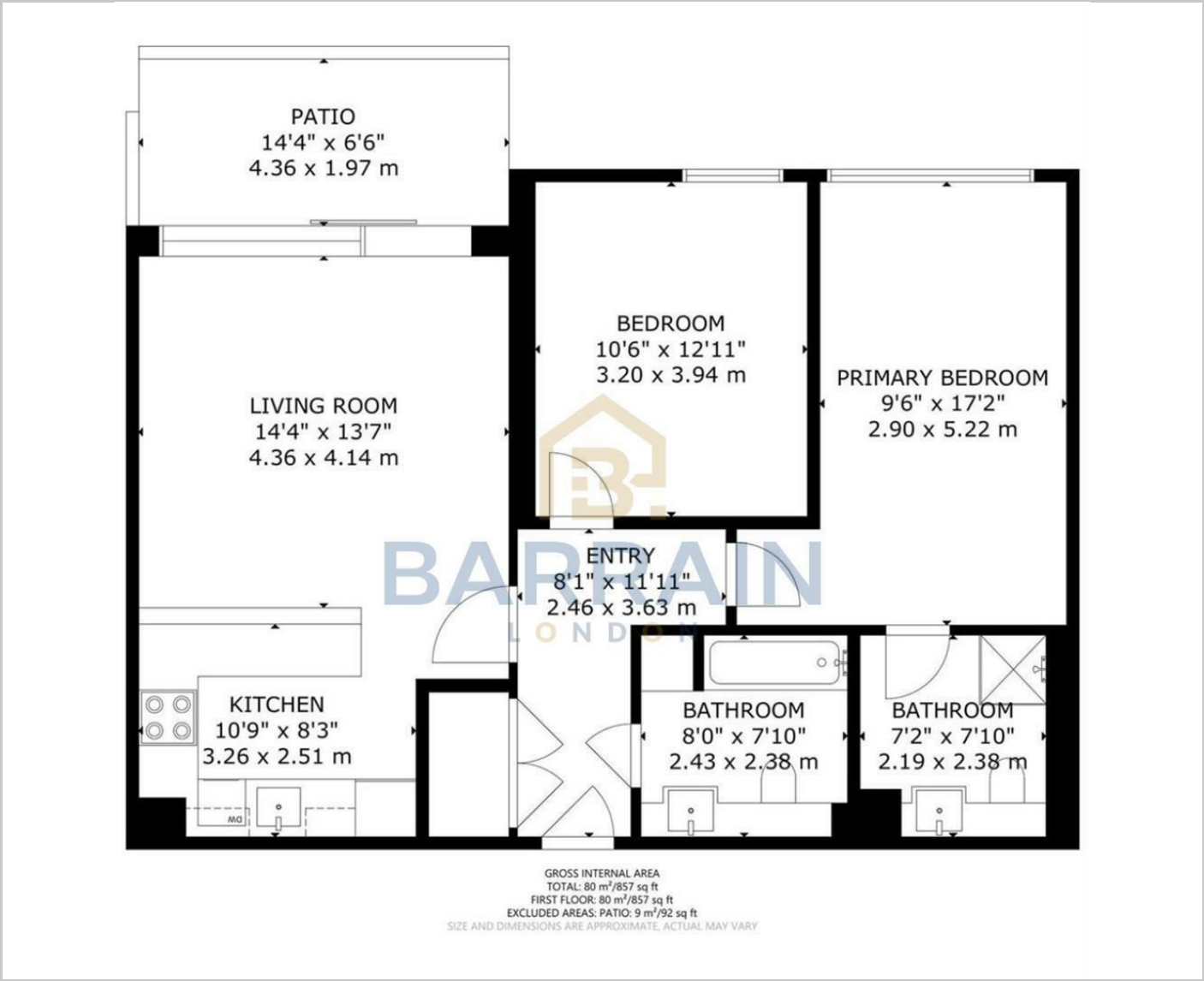
- Very spacious, modern flat with balcony!
- Newly decorated!
- 5 minutes to Galleons Reach DLR with fast access to all of London!
- Local area features shopping, cafes and restaurants.
- Waterside development with lovely communal gardens.
- Great opportunity for professionals and buy to let investors!

Situation

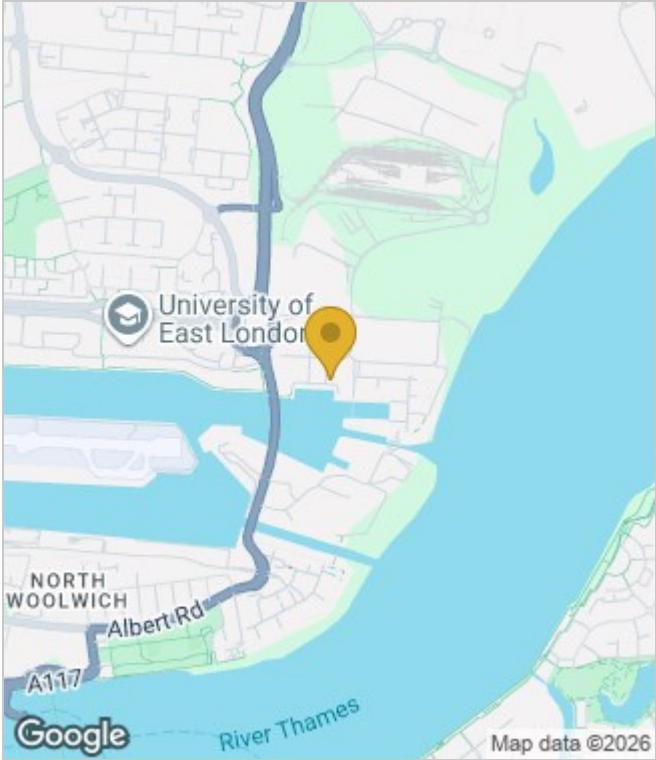


Council Tax Band: E

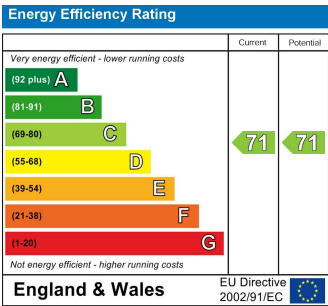
Floor Plans



Area Map



Energy Performance Graph



These particulars, whilst believed to be accurate are set out as a general outline only for guidance and do not constitute any part of an offer or contract. Intending purchasers should not rely on them as statements of representation of fact, but must satisfy themselves by inspection or otherwise as to their accuracy. No person in this firms employment has the authority to make or give any representation or warranty in respect of the property.