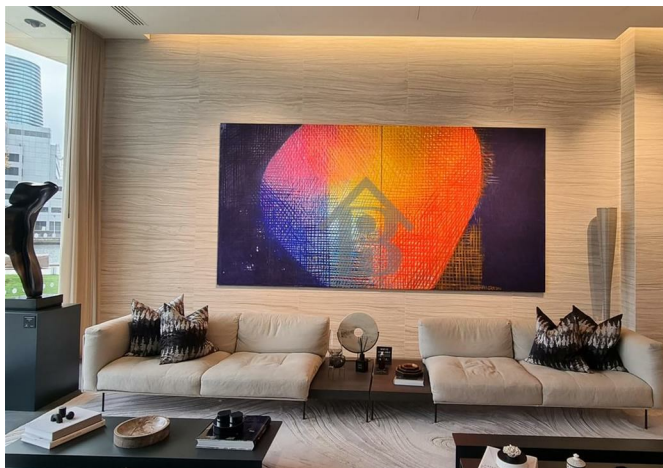




1 Park Drive, London, E14 9GG

£825,000



1 Park Drive, London, E14 9GG

£825,000

Barrain London Estate Agents are delighted to present this stunning one bedroom, one bathroom luxury apartment in the exclusive One Park Drive Development in Canary Wharf.

Offering dramatic views over the Lock and River, this property enjoys, also, the full array of onsite amenities, including a resident's gym/spa, swimming pool, private cinema, rooftop lounge & terrace, and 24 hour concierge. The new owner will experience the highest levels of comfort and convenience whilst living in one of London's premium locations.

Besides an elevated lifestyle, the new owner will appreciate some of the best connections in London. Via the nearby Jubilee Line, Elizabeth Line and DLR, much of greater London is only a few minutes away: commute to work in the City in 10 minutes, West End shows in 12 minutes, shopping in Mayfair or Oxford St in 15 Minutes, and Heathrow 40 minutes!

However, there will be plenty going on outside your door, too. Canary wharf is a vibrant cultural hub with hundreds of diverse dining, entertainment and shopping experiences available. Or explore the Isle of Dogs across the Lock by walking along the serene locks and the Thames path..

Please call today to arrange you private viewing.

Description



Situation



null

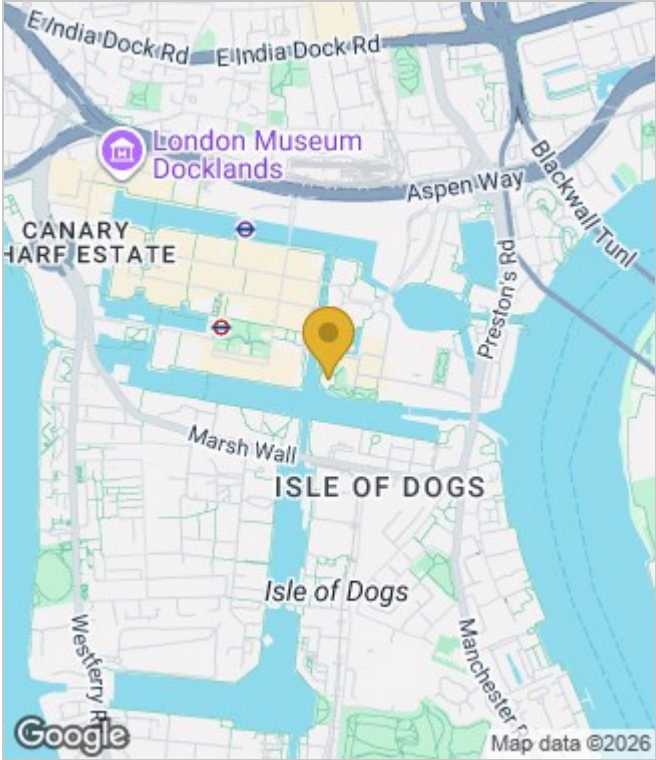
Council Tax Band: E

Available:

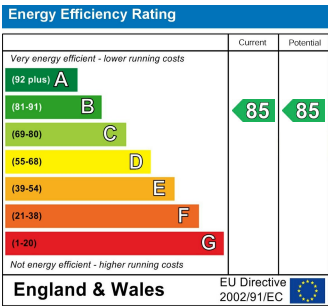
Floor Plans



Area Map



Energy Performance Graph



These particulars, whilst believed to be accurate are set out as a general outline only for guidance and do not constitute any part of an offer or contract. Intending purchasers should not rely on them as statements of representation of fact, but must satisfy themselves by inspection or otherwise as to their accuracy. No person in this firms employment has the authority to make or give any representation or warranty in respect of the property.