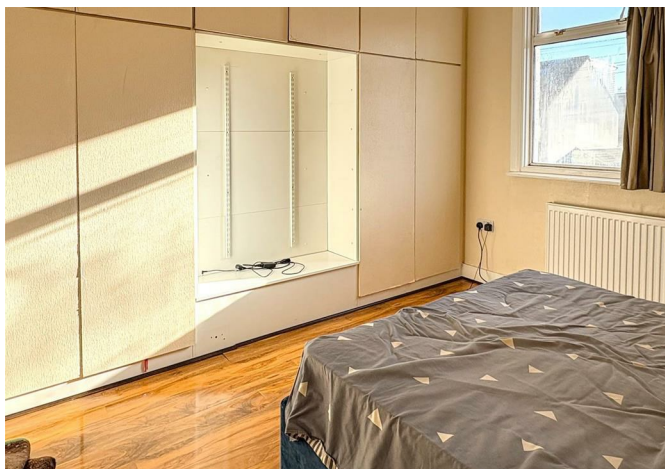
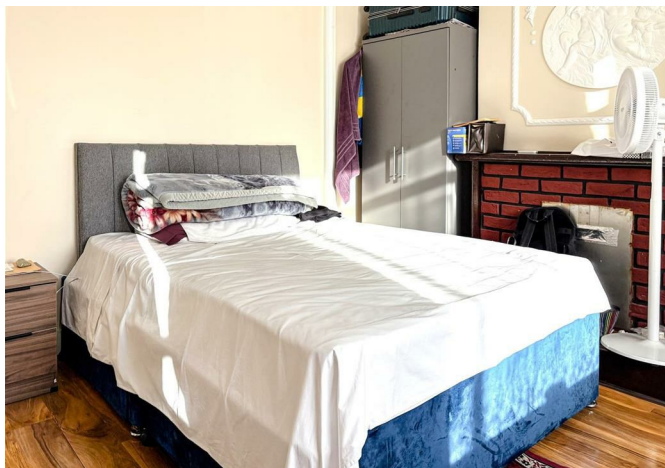




Kempton Road, London, E6 2PD
£3,000 Per month



Kempton Road, London, E6 2PD

£3,000 Per month

LONG LET - Nestled on the charming Kempton Road in London, this beautifully renovated house offers a perfect blend of modern living and spacious comfort. The property boasts four well-proportioned bedrooms, making it an ideal home for families or those seeking extra space.

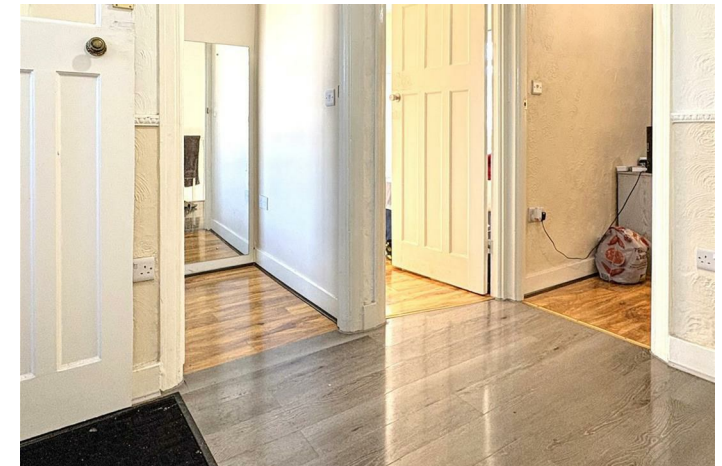
One of the standout features of this property is its large size rooms, which allow for versatile use and ample natural light, creating a bright and airy environment throughout. The renovation has been completed to a high standard, showcasing great specifications that enhance both functionality and style.

Situated close to local amenities, residents will enjoy easy access to shops, schools, and transport links, making daily life both convenient and enjoyable. This property presents a wonderful opportunity for those looking to settle in a vibrant area of London while enjoying the comforts of a modern home. Don't miss the chance to make this delightful house your new residence.

Key Features

- Stunning large 4 Bedroom
- Recently renovated and beautifully presented throughout
- Bright, modern kitchen with contemporary
- Private Garden
- Stylish, updated bathrooms
- Warm wooden flooring and neutral décor across the home
- Close to East Ham station
- Generous Storage Space

Situation

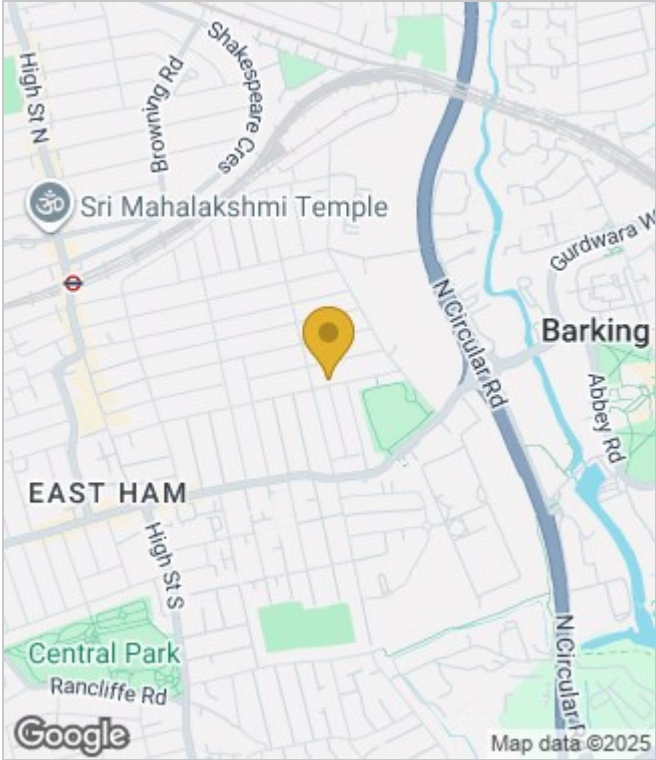


Council Tax Band: D

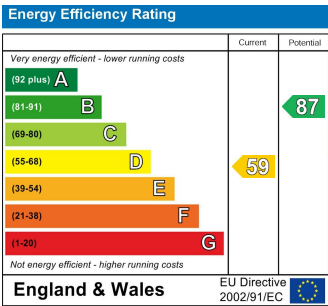
Floor Plans



Area Map



Energy Performance Graph



These particulars, whilst believed to be accurate are set out as a general outline only for guidance and do not constitute any part of an offer or contract. Intending purchasers should not rely on them as statements of representation of fact, but must satisfy themselves by inspection or otherwise as to their accuracy. No person in this firms employment has the authority to make or give any representation or warranty in respect of the property.