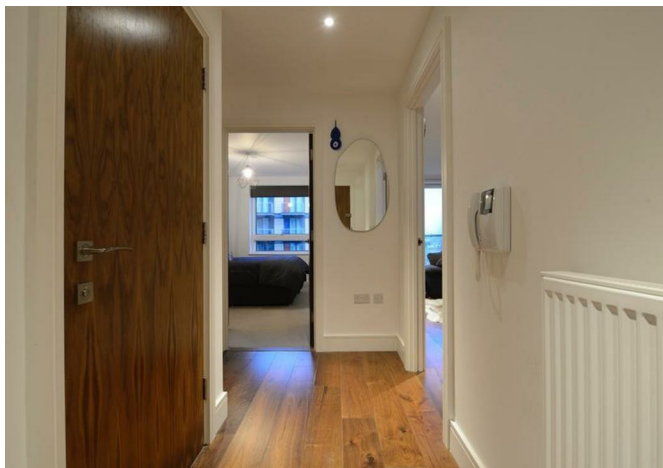




Lincoln Plaza, London, E14 9BN

£3,250 Per month



Lincoln Plaza, London, E14 9BN

£3,250 Per month

SHORT LET - BILLS INCLUDED

We are delighted to present this modern one bedroom apartment set on the 17th floor of Duckman Tower.

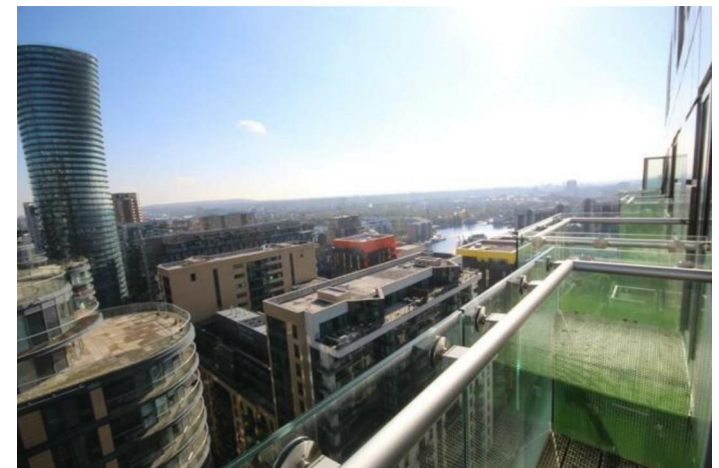
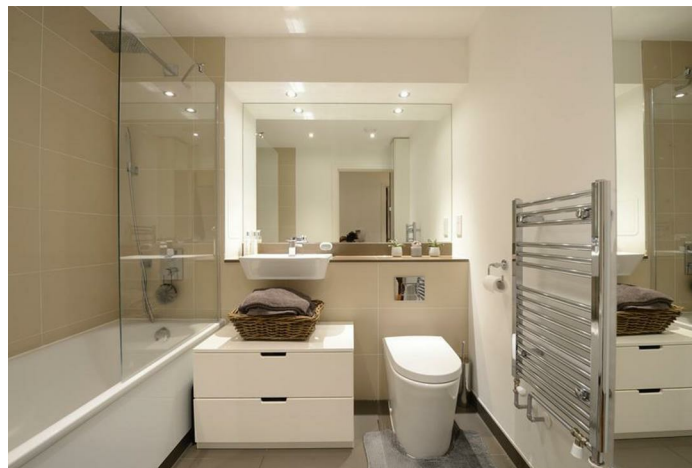
The property is comprising one double bedroom with storage, open plan kitchen and reception, modern bathroom and a private balcony with amazing views across London.

Duckman tower boasts a 24hr concierge, gym, residents winter garden and is just moment from Canary Wharf and South Quay DLR station.

Description

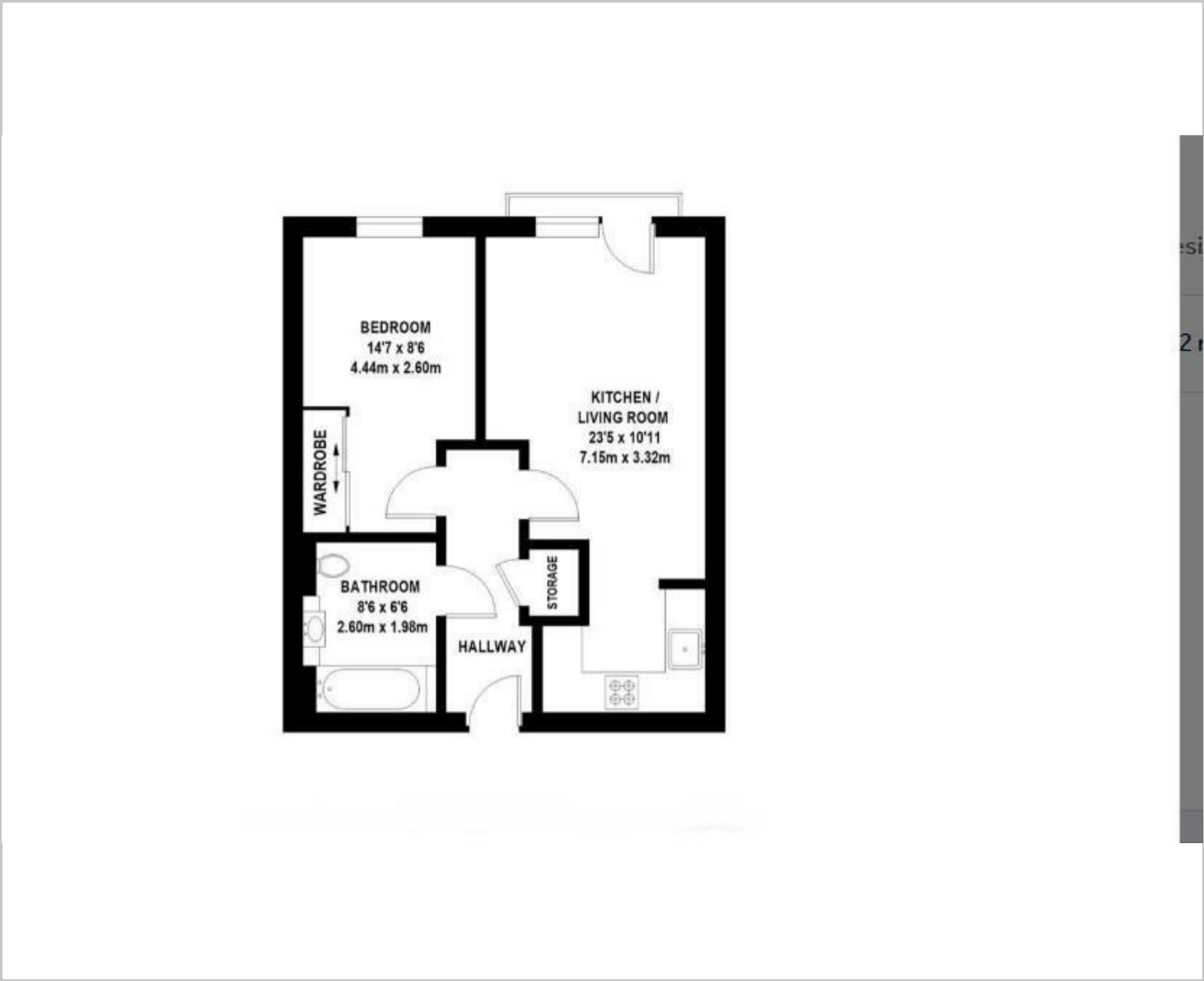


Situation

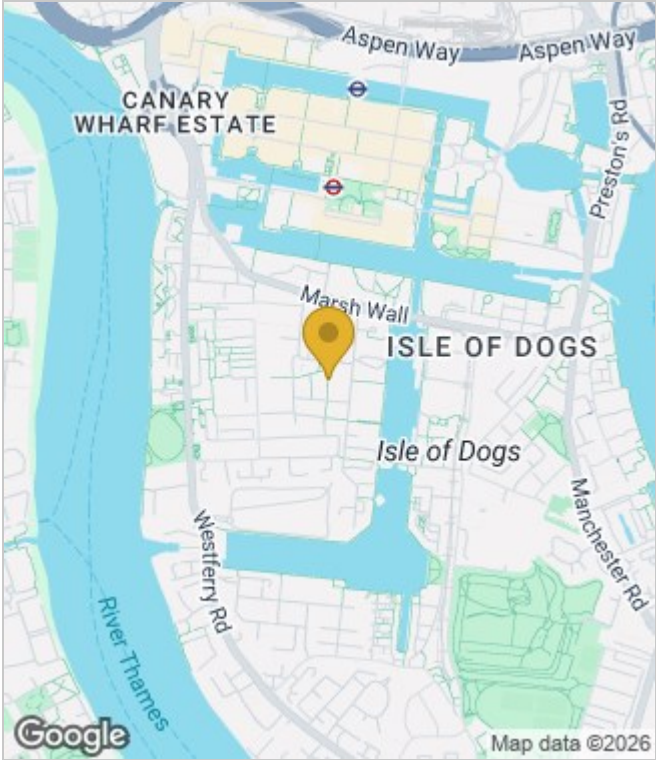


Furnished
Council Tax Band: D
Available: 2nd January 2026

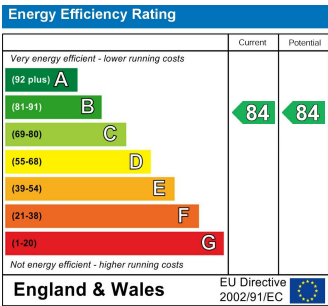
Floor Plans



Area Map



Energy Performance Graph



These particulars, whilst believed to be accurate are set out as a general outline only for guidance and do not constitute any part of an offer or contract. Intending purchasers should not rely on them as statements of representation of fact, but must satisfy themselves by inspection or otherwise as to their accuracy. No person in this firms employment has the authority to make or give any representation or warranty in respect of the property.