



Winsor Terrace, London, E6 6LE

£425,000





## Winsor Terrace, London, E6 6LE

£425,000

Barrain London is pleased to introduce this very attractive period terrace house located on a secluded residential turning less than 10 minutes walk from Beckton DLR station. Charming and well maintained, this accommodation comprises of two good sized double bedrooms, two receptions and a separate kitchen. However, given the huge garden to the rear, this property has potential to be transformed to a 4 bedroom palace with a double garage at the bottom of the garden (STPP)!

The location is very convenient to ASDA and LIDL, both less than 10 minutes walk. For joggers, pet walkers, and pram pushers, pretty Beckton Park is just behind the house. Of course, having Beckton DLR station just around the corner is great news for commuters, but the Elizabeth line at Custom House is close, too, less than a 20 minute bus ride. This puts the whole of London just a few stops away: glitzy Canary Wharf, Westfield Stratford shopping, West End venues, Chelsea and beyond -- even Heathrow -- can be got to fast!

Great area pre-schools, and junior and senior schools, too, including outstanding Brampton Manor Academy.

Come live in green and leafy Beckton, a great choice for families, commuters and buy to let investors.



Description

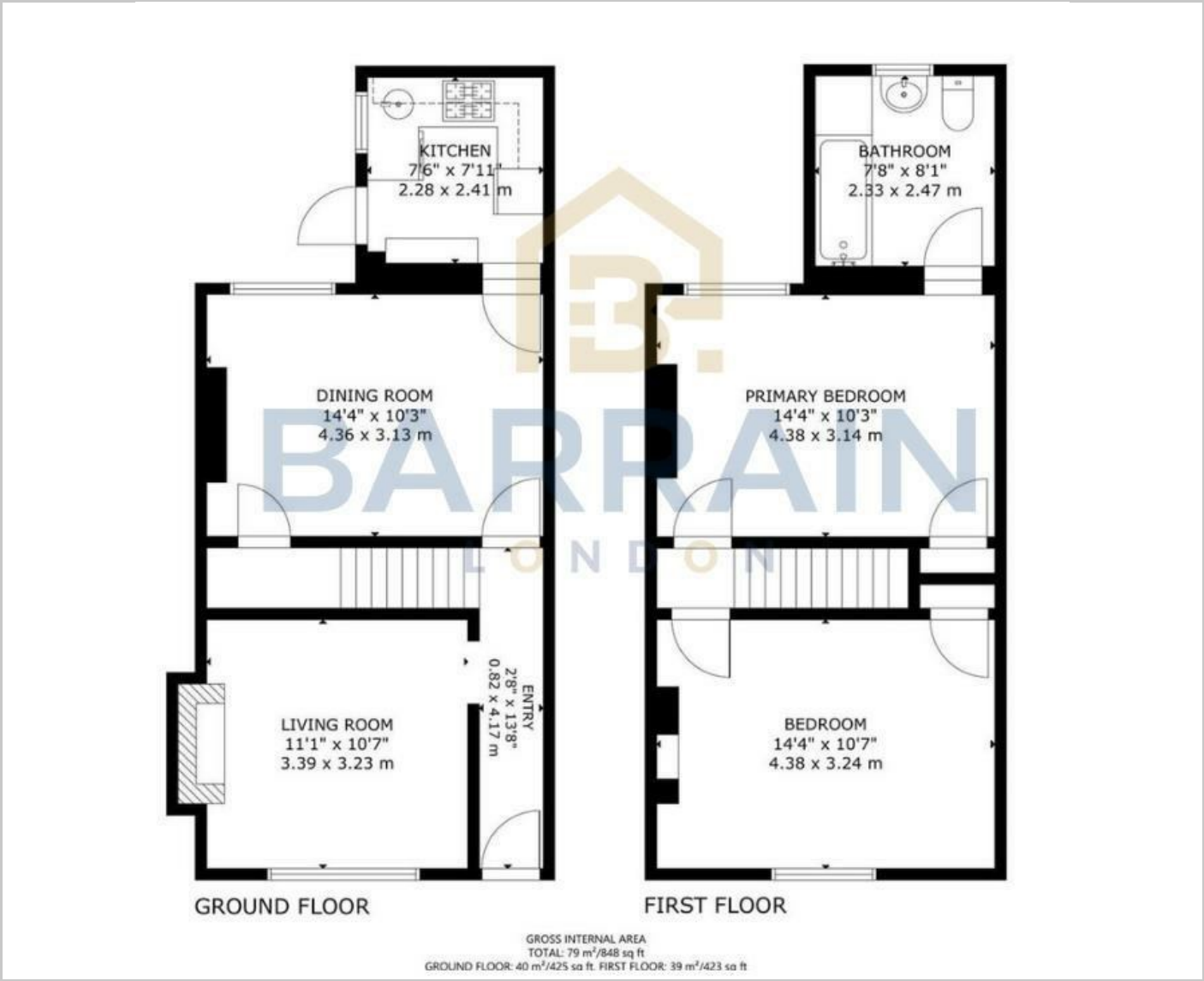


Situation

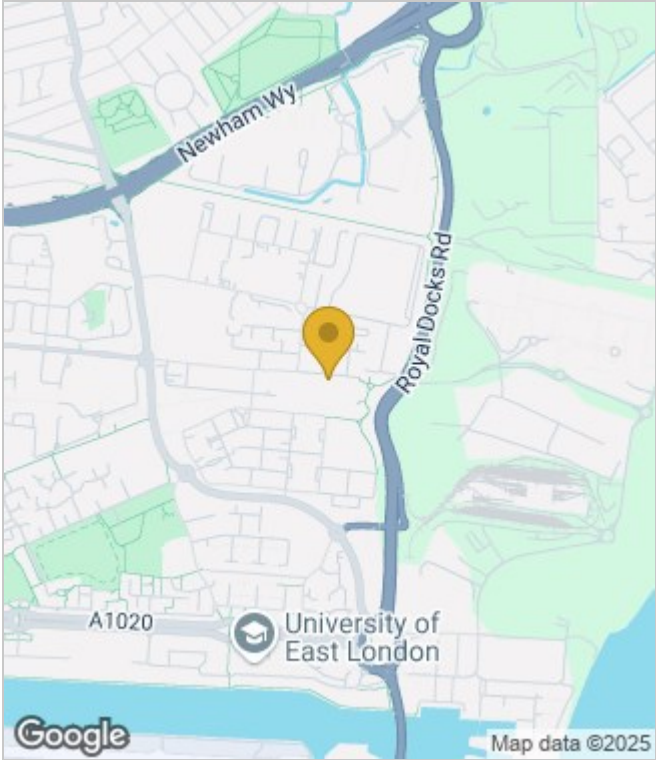


null  
Council Tax Band: C  
Available:

Floor Plans



Area Map



Energy Performance Graph



These particulars, whilst believed to be accurate are set out as a general outline only for guidance and do not constitute any part of an offer or contract. Intending purchasers should not rely on them as statements of representation of fact, but must satisfy themselves by inspection or otherwise as to their accuracy. No person in this firms employment has the authority to make or give any representation or warranty in respect of the property.