



Dixon Close, London, E6 5QF

£430,000



Dixon Close, London, E6 5QF

£430,000

Barrain London is pleased to introduce this very attractive 2 bedroom end of terrace house in green and leafy Beckton. Exceptionally well maintained! Spacious accommodation comprises of two good sized double bedrooms and a three piece family bathroom, and downstairs a stylish open plan lounge-diner reception with a modern integrated kitchen. This home also has a lovely fenced courtyard garden with a summer house and off street parking.

Great area junior and senior schools, too, including outstanding Brompton Manor Academy.

This location is very convenient: Beckton and Beckton Park DLR stations are just a 7 minute walk. During the week, this is great news for commuters; over the weekend, it's great news for everyone! The excitement of Canary Wharf and legendary Stratford shopping are just a short train hop away, whilst the Elizabeth Line connection at nearby Custom House makes travel to the whole of London very quick, from the City, to the West End, to Bond street! Even Heathrow can be got to fast!

More convenience! Tesco Extra is 7 minutes drive, ASDA is a 8 minute walk, LIDL is a 9 minute walk. For joggers or pet walkers, pretty Beckton Park is 2 minutes away.

Come to live in Beckton, a green and pleasant London suburb very well connected by road and rail! A great choice for families commuters and buy to let investors.

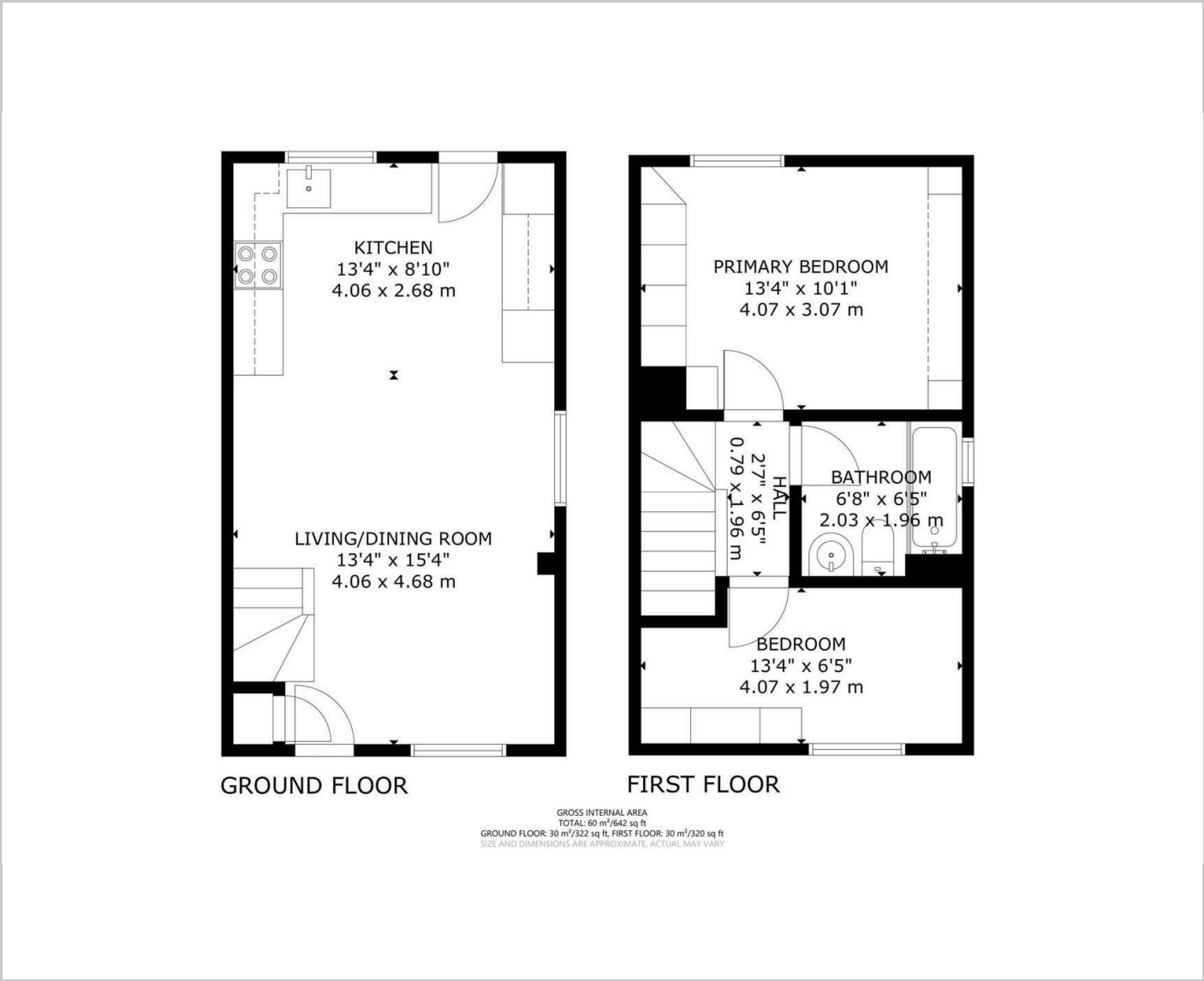
Description

Situation

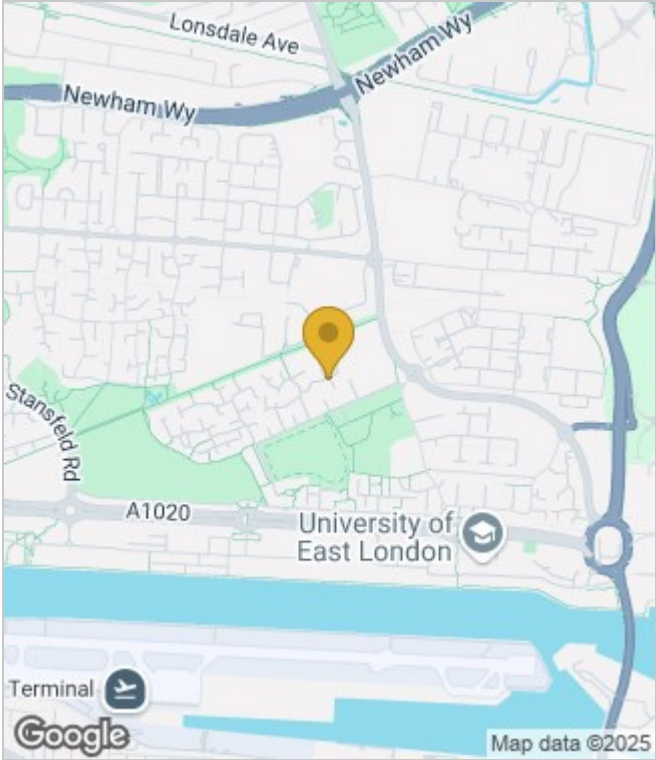
null
Council Tax Band: C
Available:



Floor Plans



Area Map



Energy Performance Graph



These particulars, whilst believed to be accurate are set out as a general outline only for guidance and do not constitute any part of an offer or contract. Intending purchasers should not rely on them as statements of representation of fact, but must satisfy themselves by inspection or otherwise as to their accuracy. No person in this firms employment has the authority to make or give any representation or warranty in respect of the property.