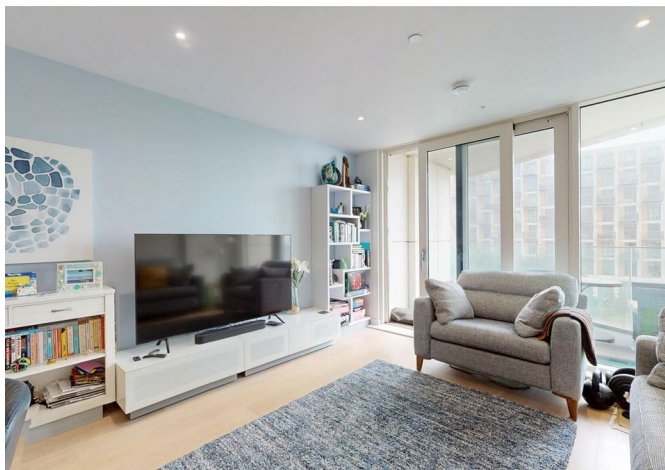




27 Royal Crest Avenue, London, E16 2SU

£625,000



27 Royal Crest Avenue, London, E16 2SU

£625,000

Barrain London is pleased to introduce to the market this exceptional two bedroom apartment in the exclusive Royal Wharf Development. Besides stunning balcony views over the Thames, this 3rd floor property features a luxury specification open plan lounge-diner and fully integrated modern kitchen. Sleeping accommodation includes two very generously-sized double bedrooms (one ensuite). All rooms, including the kitchen and two bathrooms, are stylishly appointed.

Convenient modern living is guaranteed: landscaped communal gardens, a 24-hour concierge and security service, and a 20,000 sq ft clubhouse with a 25m swimming pool, hydro-pool, sauna, steam room, tropical rain-shower and fully equipped gym are all on your doorstep. Onsite amenities including a Fullers Pub, Starbucks, Sainsburys, and a pharmacy!

For those who drive, this property comes with underground parking, and, for those who commute, Pontoon Dock and Custom House (Elizabeth Line and DLR) stations provide quick access to Canary Wharf (12 minutes), Bank (30 minutes), or the West End (40 minutes).

Please call to arrange your viewing today!

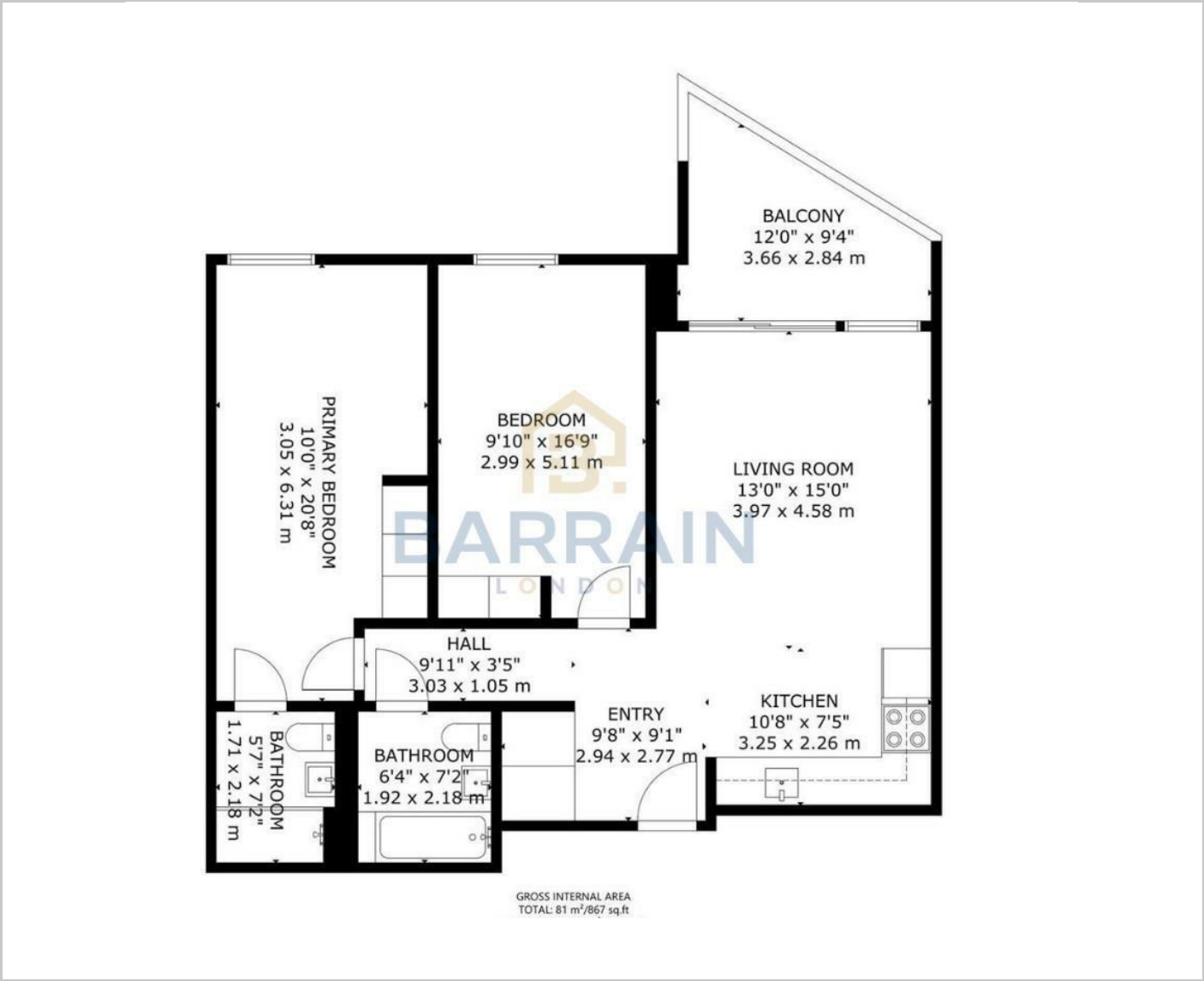
Description

Situation

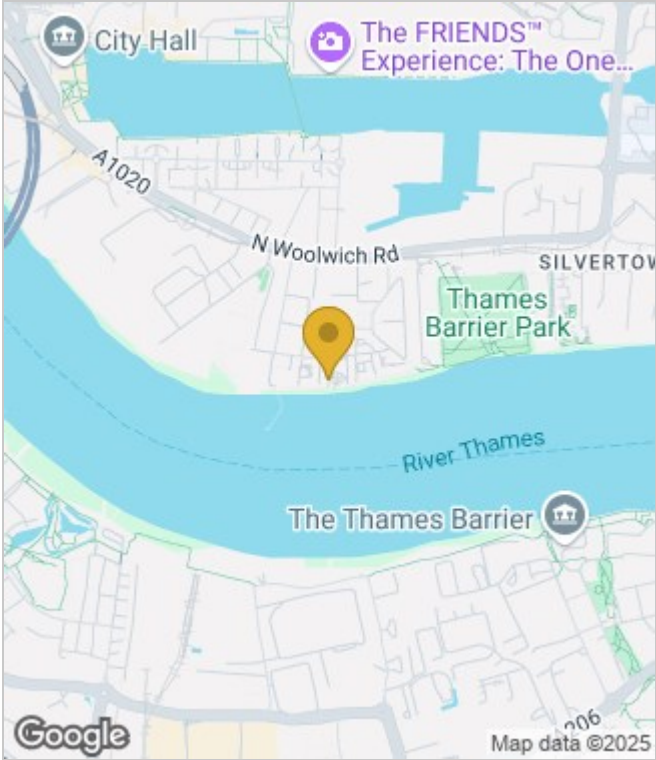
null
Council Tax Band: E
Available:



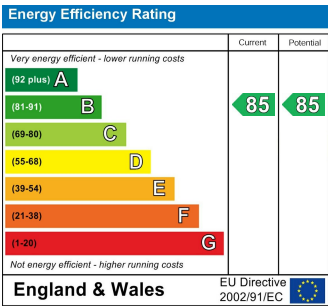
Floor Plans



Area Map



Energy Performance Graph



These particulars, whilst believed to be accurate are set out as a general outline only for guidance and do not constitute any part of an offer or contract. Intending purchasers should not rely on them as statements of representation of fact, but must satisfy themselves by inspection or otherwise as to their accuracy. No person in this firms employment has the authority to make or give any representation or warranty in respect of the property.