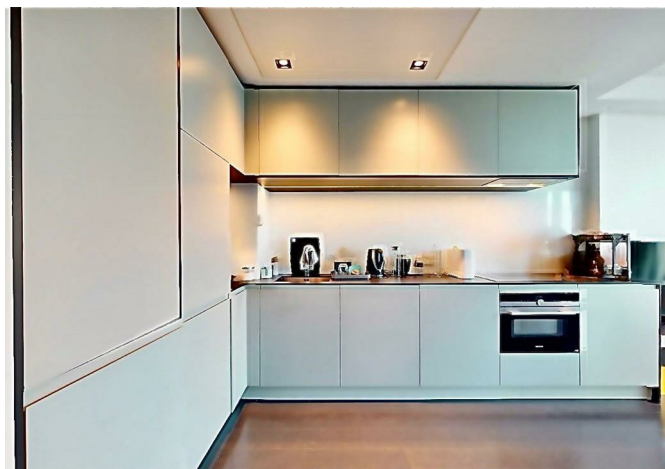
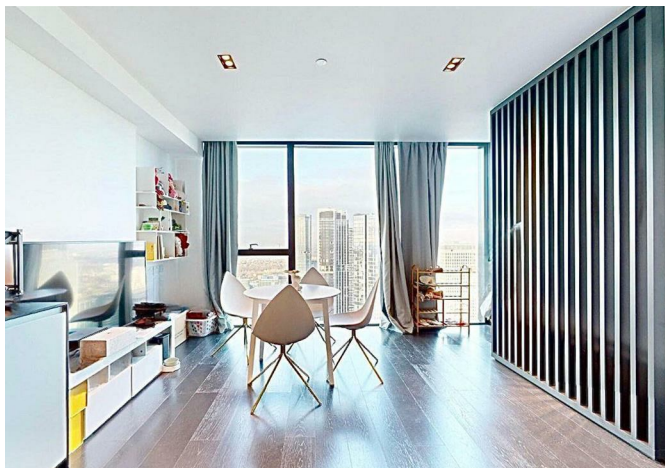




203 Marsh Wall, London, E14 9TW

£2,750 Per month



203 Marsh Wall, London, E14 9TW

£2,750 Per month

This stunning new build apartment offers a unique opportunity for modern city living. Situated on the 48th floor, the property boasts breath-taking water views that are sure to impress. Spanning an impressive 420 square feet, this apartment is designed with contemporary elegance in mind.

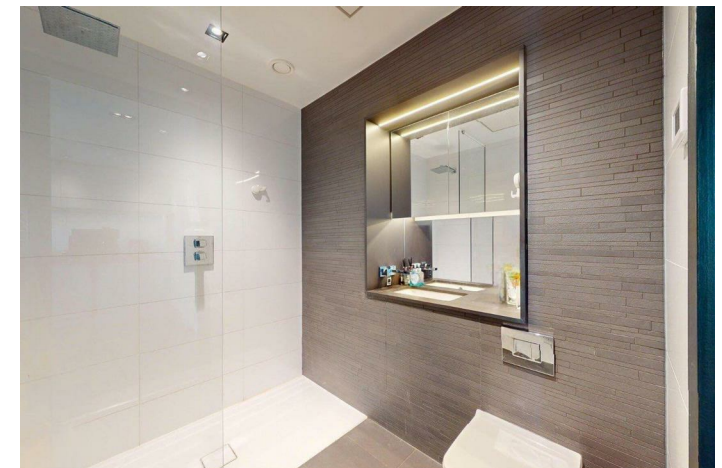
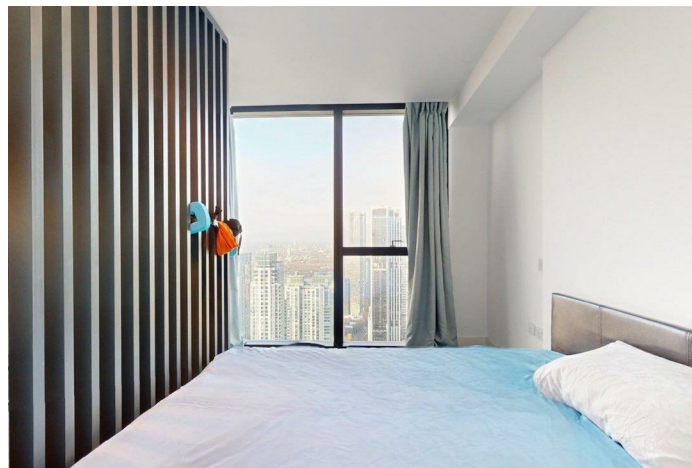
The layout includes a well-appointed reception room, perfect for relaxation or entertaining guests. The bathroom is stylishly finished, providing a comfortable and functional space. The high floor location not only enhances the views but also ensures a peaceful atmosphere away from the hustle and bustle of the city below.

this apartment features the latest in modern design and amenities, making it an ideal choice for those seeking a stylish urban retreat. Whether you are a first-time buyer or looking to invest in a prime London property, this apartment offers a perfect blend of comfort and sophistication.

Key Features

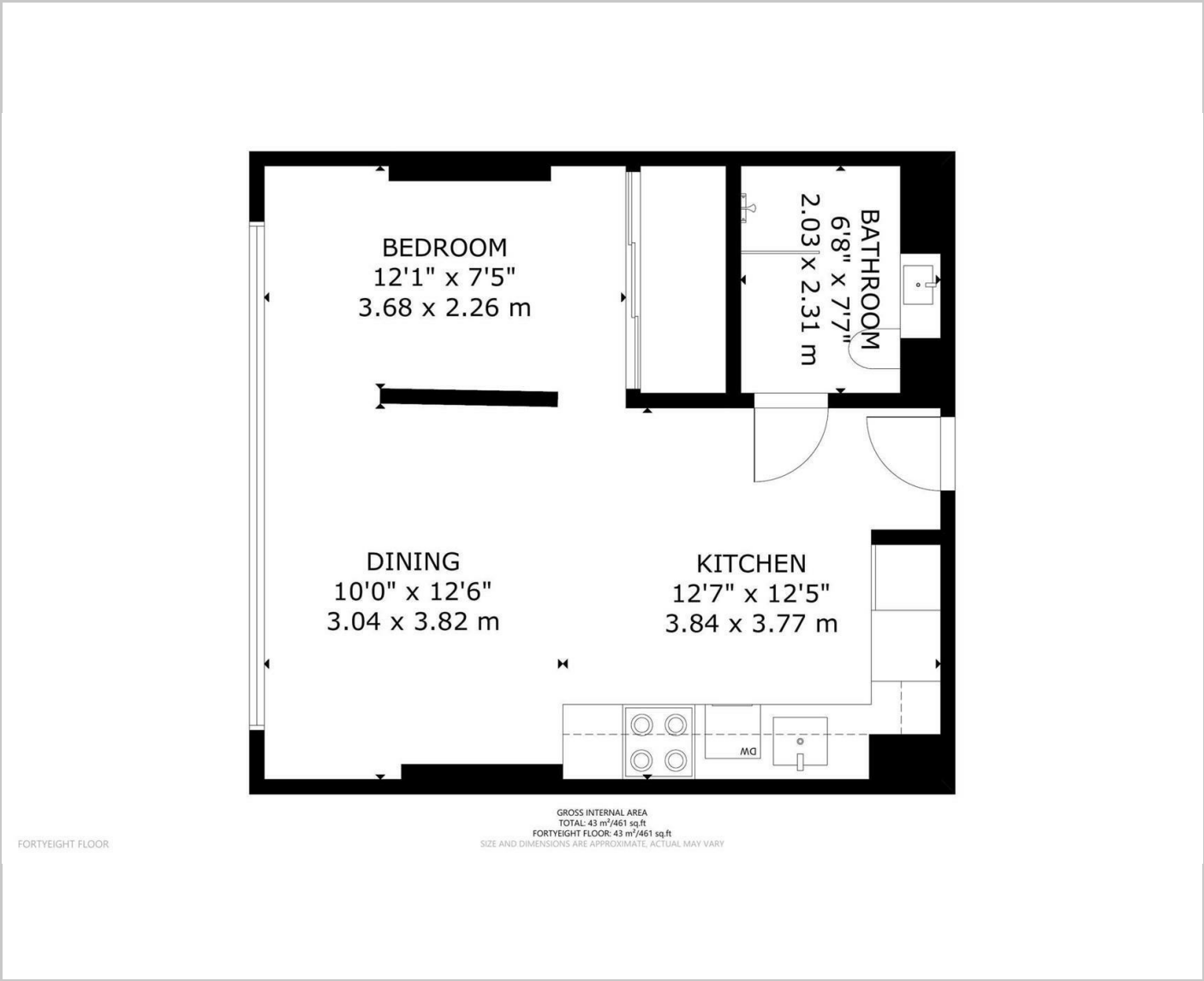
- 48th Floor
- Amazing Views / Central London
- Concierge
- Spa & Gym
- Residents Bar
- Moments away from South Quay DLR Station
- Walking Distance to Canary Wharf Underground and ELizabeth Line Stations
- Close to Local Amenities and Shops
- Less than 10 -15 Minuets To Bank

Situation

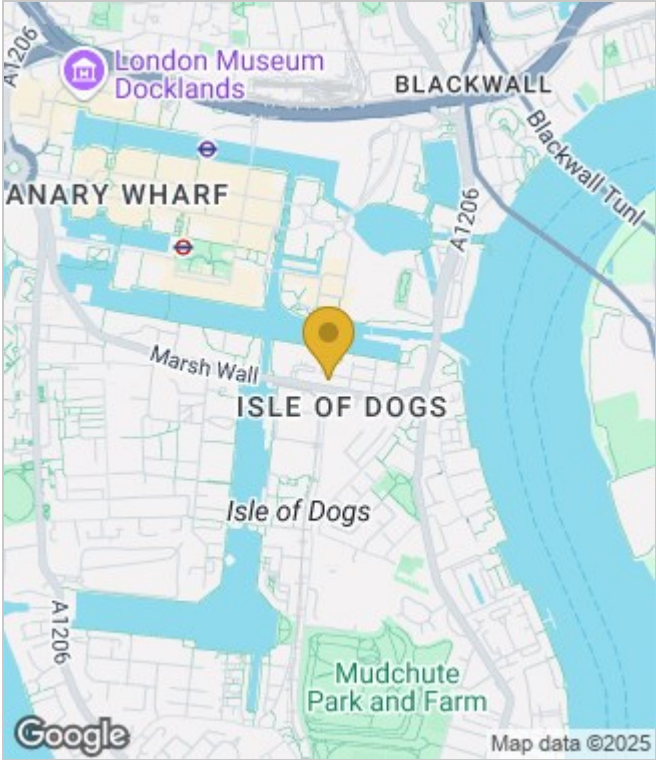


Council Tax Band: E

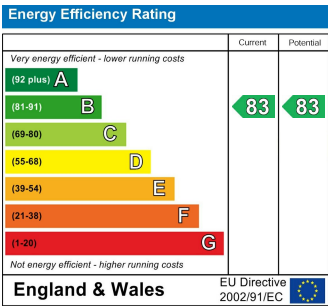
Floor Plans



Area Map



Energy Performance Graph



These particulars, whilst believed to be accurate are set out as a general outline only for guidance and do not constitute any part of an offer or contract. Intending purchasers should not rely on them as statements of representation of fact, but must satisfy themselves by inspection or otherwise as to their accuracy. No person in this firms employment has the authority to make or give any representation or warranty in respect of the property.