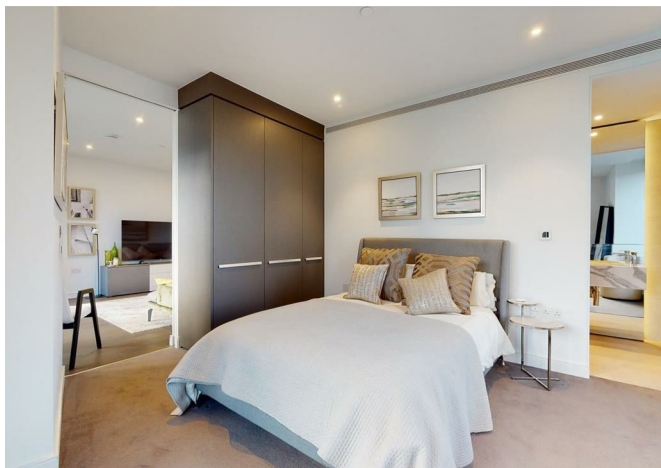




10 Park Drive, London, E14 9ZW

£1,250,000



10 Park Drive, London, E14 9ZW

£1,250,000

Barrain London are very pleased to offer this stunning apartment located within the 10 Park Drive development. This property, arranged over approximately 1029 sq ft of luxury accommodation, offers a very spacious open plan reception/dining area opening onto a stylish integrated kitchen, along with 2 large double bedrooms (one ensuite), and a family bathroom and guest toilet.

Convenient modern living awaits the new owner, including access to Third Space gymnasium, pool, parking and 24/7 concierge. Also included are a very high end fitted furniture pack as well as electric blinds. The roof terrace, like the rest of this building, is exceptional.

10 Park Drive is the first private development located within the exciting Canary Wharf district. Wide-ranging transport links to anywhere in London are on your door step at Canary Wharf. Featuring Jubilee line and Elizabeth Line stations and the DLR, countless shopping, dining, cultural and entertainment options - even Heathrow Airport -- are quick to get to, great news for commuters and great for living the dream in London!

Please call in to arrange your private viewing.

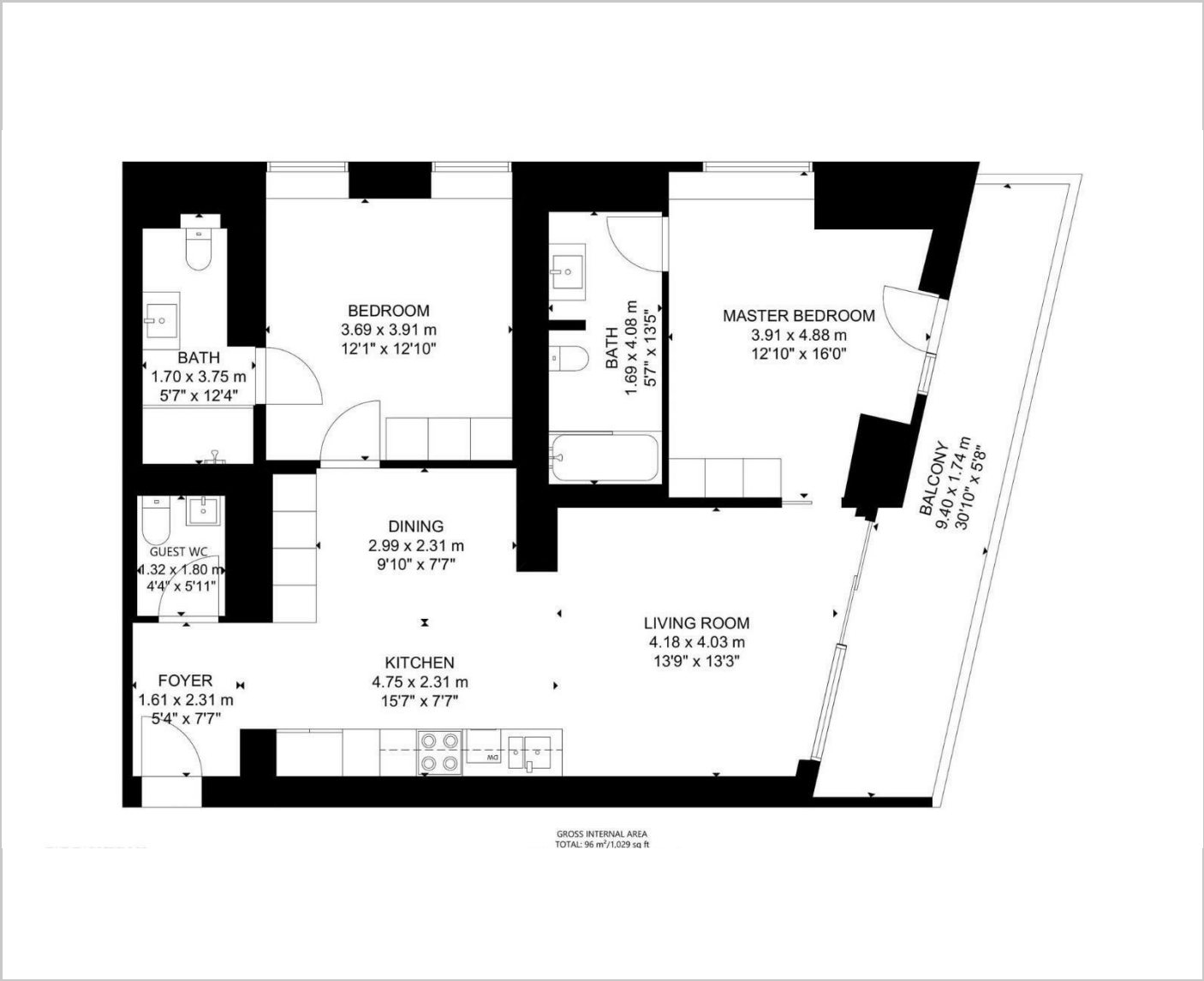
Description

Situation

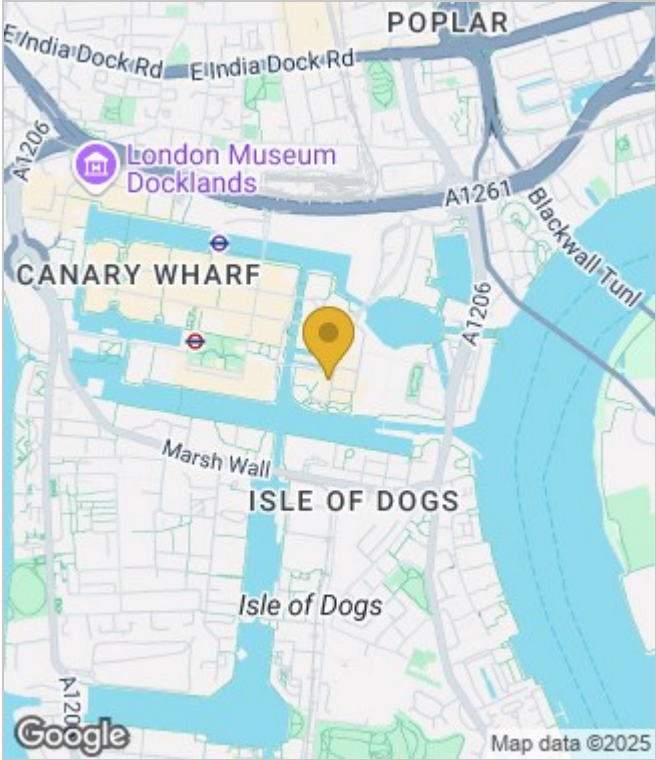
null
Council Tax Band: F
Available:



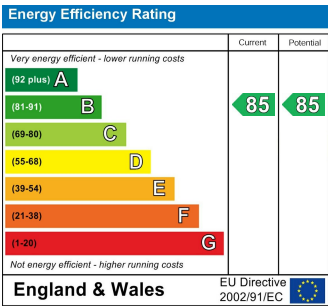
Floor Plans



Area Map



Energy Performance Graph



These particulars, whilst believed to be accurate are set out as a general outline only for guidance and do not constitute any part of an offer or contract. Intending purchasers should not rely on them as statements of representation of fact, but must satisfy themselves by inspection or otherwise as to their accuracy. No person in this firms employment has the authority to make or give any representation or warranty in respect of the property.