



Newport Avenue, London, E14 2DQ

£500,000



Newport Avenue, London, E14 2DQ

£500,000

Barrain London Estate Agents are pleased to introduce this very large, attractive three-bedroom apartment in Virginia Quay less than 5 minutes walk to East India DLR station (12 minutes walk to Canning Town underground station). Spread over 825 square feet, this spacious, stylish accommodation features two bathrooms (one ensuite), a modern integrated kitchen, gated parking, and impressive balcony views over the O2 and the Thames River cable cars. Exclusive Virginia Quay benefits from 24 hour portorage & controlled vehicle access.

Enjoy the convenience of having extensive shopping, dining and entertainment options in London-wide destinations just a few quick train hops away: in vibrant Canning Town, bustling Stratford, or stunning Canary Wharf. Fast Jubilee and Elizabeth lines connections place most of Greater London within a short rail ride, too, including Liverpool Street, the City, the West End, Baker Street and Heathrow Airport!

You will also enjoy outdoor spaces in well laid out and maintained communal gardens or by taking a leisurely stroll along the river on the Thames Path (less than a minute away!)

Viewings by appointment; please call to arrange your viewing today.

Description

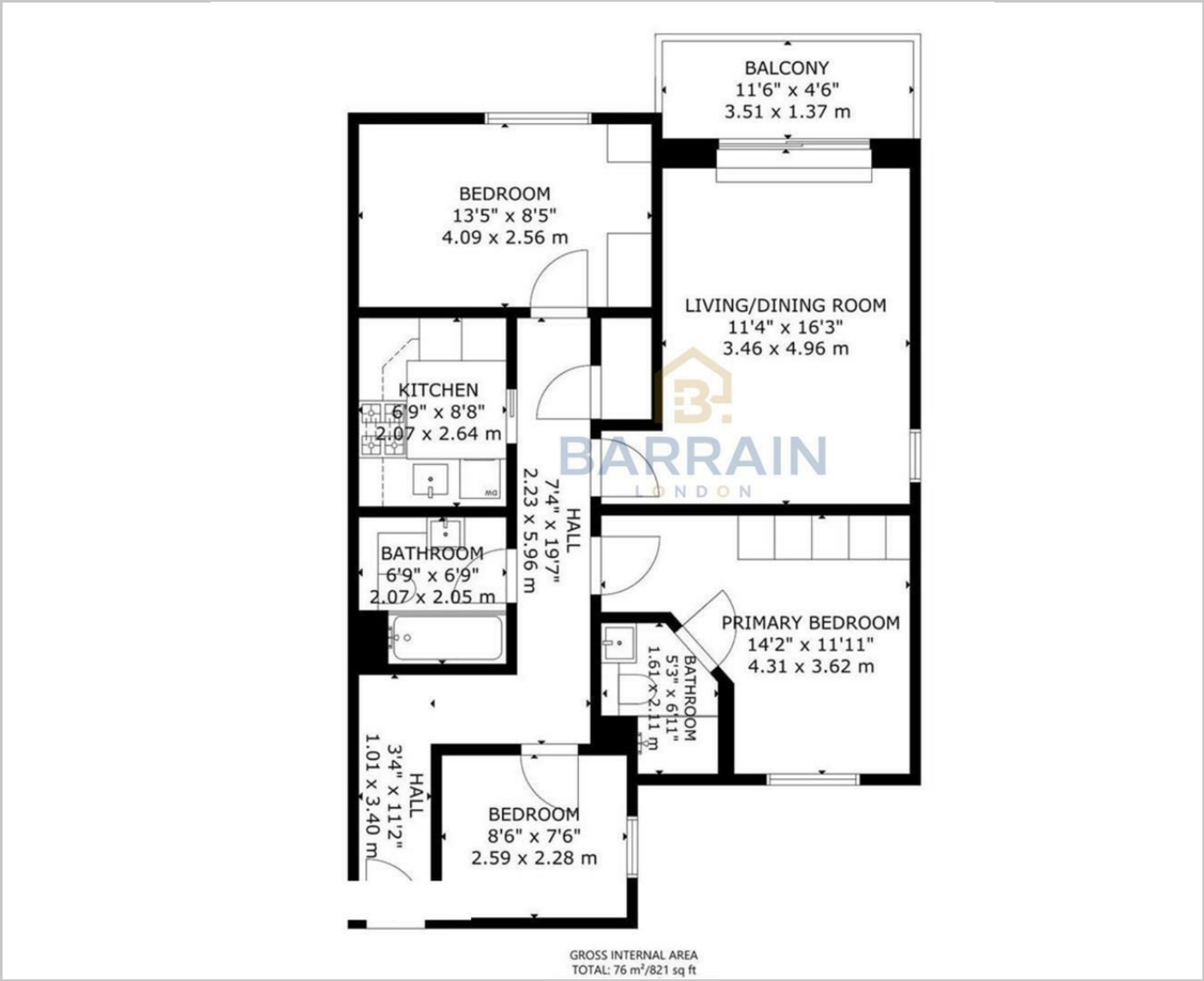


Situation

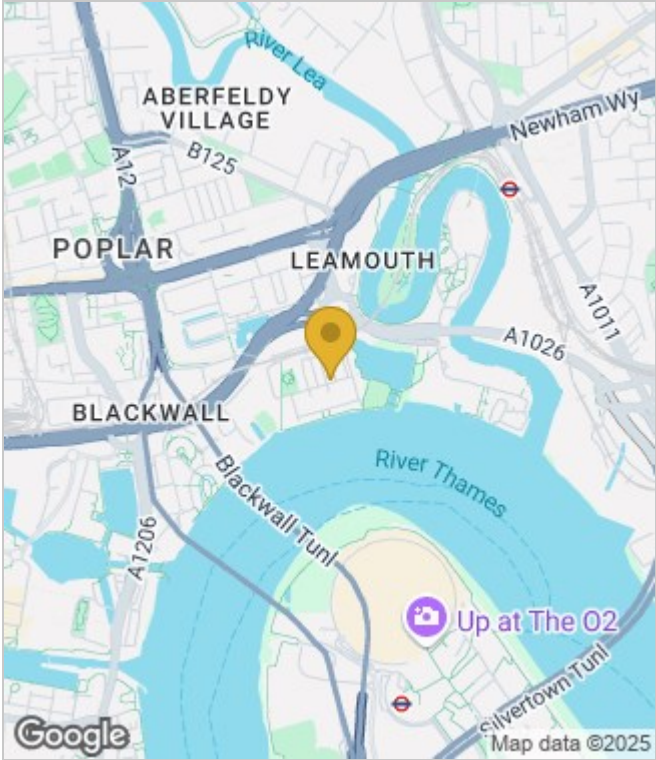


null
Council Tax Band: E
Available:

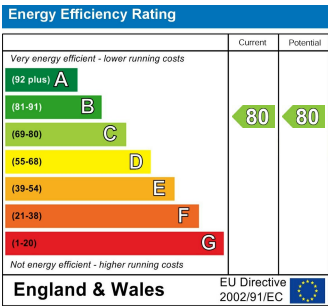
Floor Plans



Area Map



Energy Performance Graph



These particulars, whilst believed to be accurate are set out as a general outline only for guidance and do not constitute any part of an offer or contract. Intending purchasers should not rely on them as statements of representation of fact, but must satisfy themselves by inspection or otherwise as to their accuracy. No person in this firms employment has the authority to make or give any representation or warranty in respect of the property.