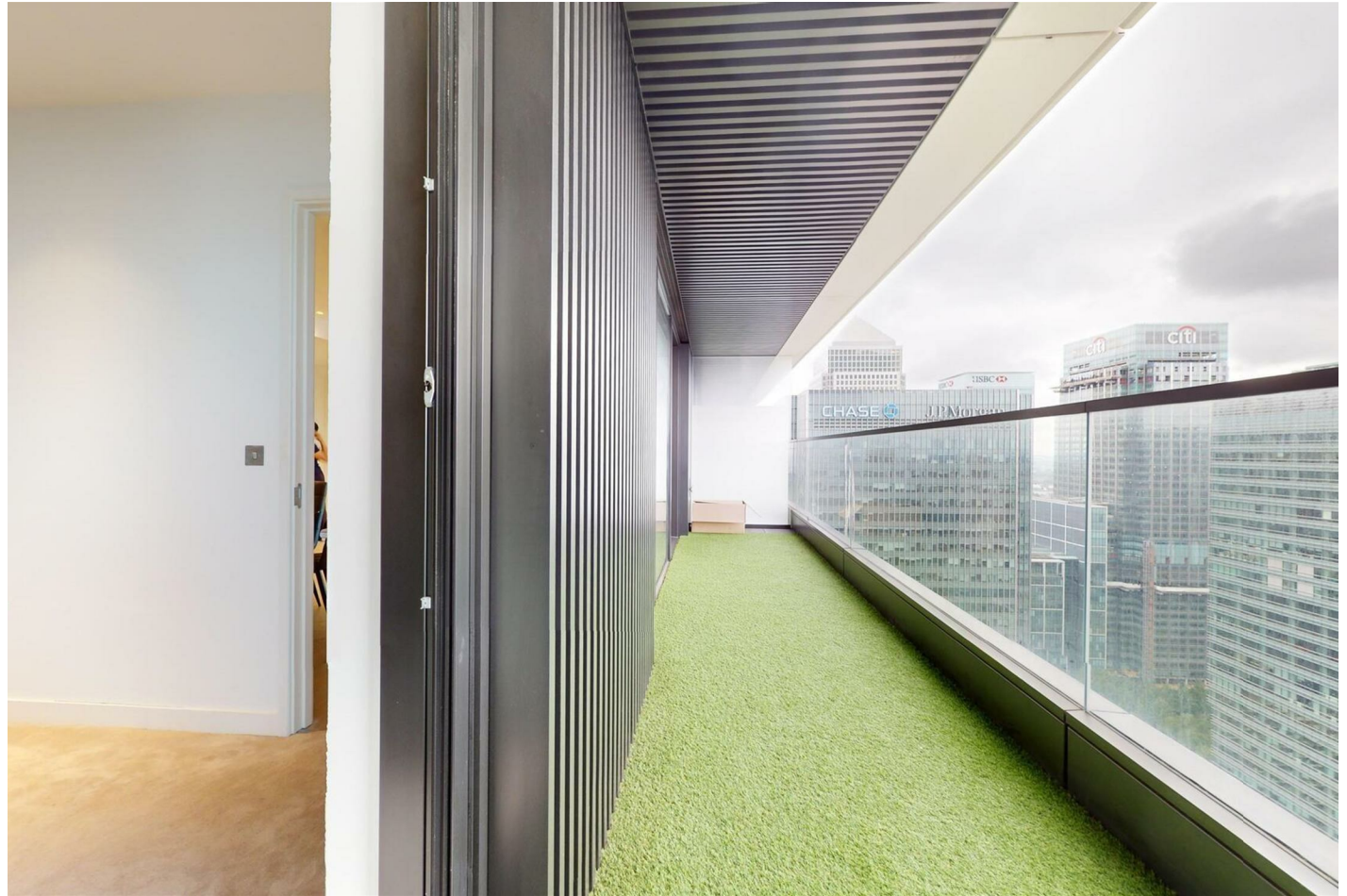




1 Wards place, London, E14 9DY  
**£3,250 Per month**





1 Wards place, London, E14 9DY

£3,250 Per month

LONG LET - One Bedroom Apartment in Bagshaw Building, Wardian London.

luxury one bedroom apartment set in the iconic Wardian development in the heart of Canary Wharf. The property comprises; a spacious open plan reception area with integrated kitchen, chic bathroom and a large private balcony with stunning views.

Ideally located in the centre of Canary Wharf, Wardian London creates a perfect combination of state-of-the-art city living and verdant urban oasis. The development features 24/7 concierge service and residents have exclusive access to top-of-the-range facilities including a state of art gym, swimming pool, cinema, sky bar and lounge located on the 53rd floor, offering breath-taking views across the capital.

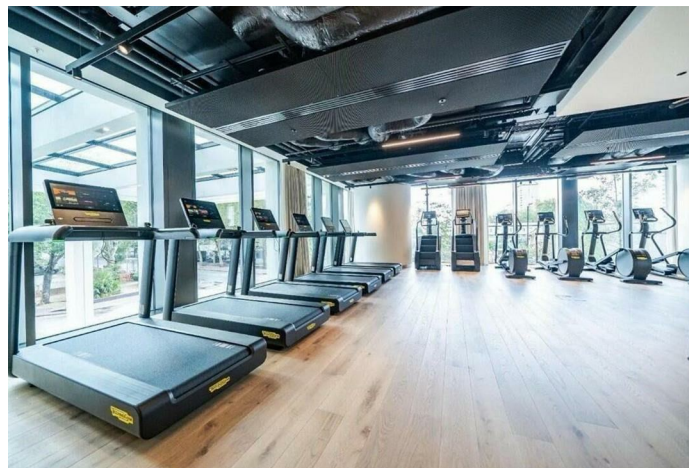
Situated minutes away from Canary Wharf Underground / DLR Station for quick connections to Central London.



## Key Features

- Stunning one bedroom luxury flat with dramatic views over the lock and Canary Wharf
- Private balcony with access from lounge and bedroom
- Residents Gym / Pool / Private Cinema
- Excellent connections to the City and Greater London via DLR, Elizabeth Line, and Jubilee Line
- Exclusive sky lounge and cocktail bar in the building
- Exceptional dining, shopping, and entertainment options locally

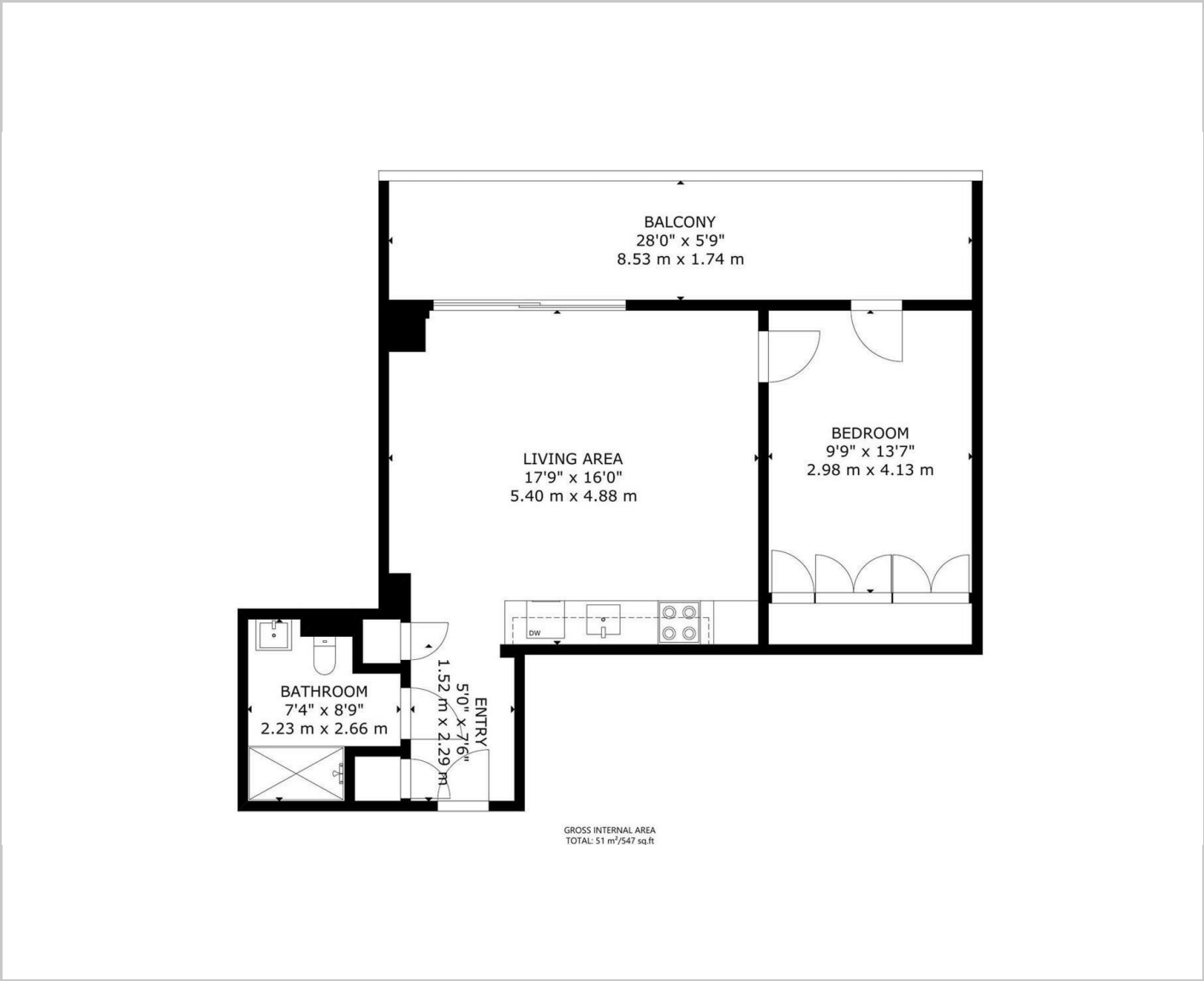
## Situation



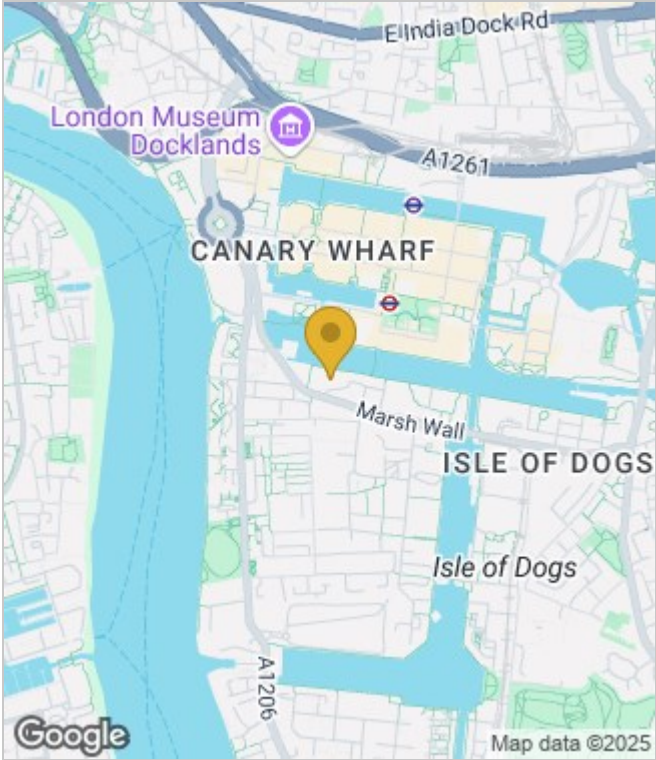
Council Tax Band: E



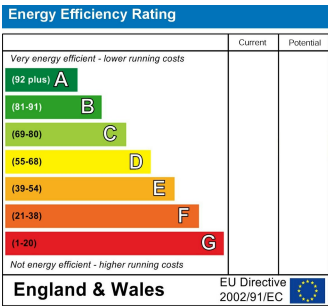
Floor Plans



Area Map



Energy Performance Graph



These particulars, whilst believed to be accurate are set out as a general outline only for guidance and do not constitute any part of an offer or contract. Intending purchasers should not rely on them as statements of representation of fact, but must satisfy themselves by inspection or otherwise as to their accuracy. No person in this firms employment has the authority to make or give any representation or warranty in respect of the property.