



1 Park Drive, London, E14 9GG
Offers in excess of £895,000



1 Park Drive, London, E14 9GG

Offers in excess of £895,000

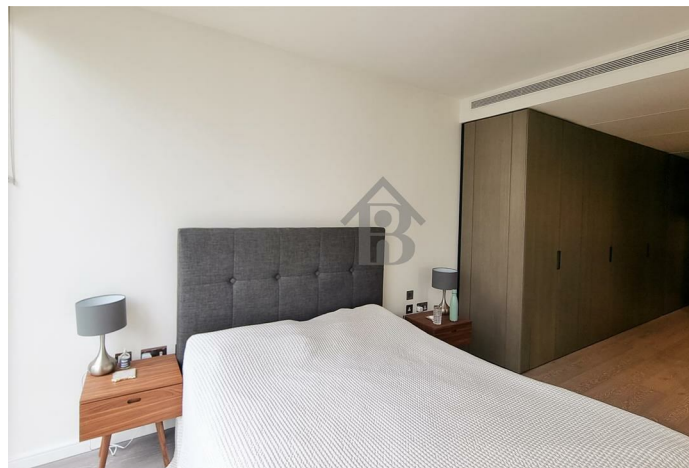
Barrain London Estate Agents are delighted to present this stunning one bedroom, one bathroom apartment in the ever popular One Park Drive Development, (Canary Wharf). Offering luxurious resident's gym/spa, swimming pool, private cinema, resident rooftop lounge & terrace, secure 24 hour concierge. The property offers easy access into the City via DLR or Jubilee Line.

One Park Drive is conveniently located in Canary Wharf, next to the river Thames, offering rich history and a flourishing mixture of shopping, cultural, dining and entertainment options. Alongside the local scene, you will enjoy easy access to the whole of London, including the City, Stratford & the West End, via very close DLR (South Quay), Jubilee Line and Elizabeth Line (Underground) connections.

Key Features

- Spacious one bedroom luxury apartment looking down on Canary Wharf
- 24/7 Concierge
- Gym, Pool, Private Cinema
- Private balcony
- Luxurious interiors with natural materials and stunning finishes
- Minutes to Canary Wharf (DLR, Jubilee and Elizabeth lines) - quick access Greater London
- In your neighbourhood: fine dining, world class shopping, amazing entertainment options
- Allocated storage space in the Basement Level

Situation

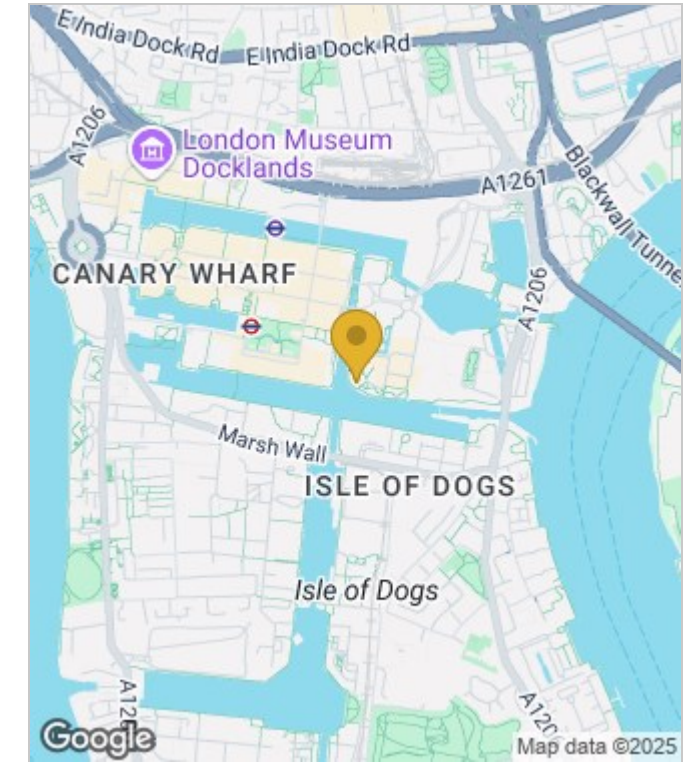


Council Tax Band: E

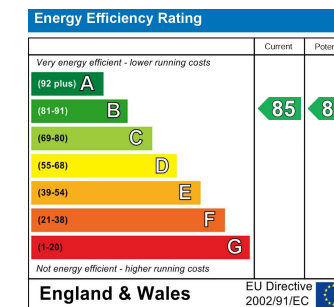
Floor Plans



Area Map



Energy Performance Graph



These particulars, whilst believed to be accurate are set out as a general outline only for guidance and do not constitute any part of an offer or contract. Intending purchasers should not rely on them as statements of representation of fact, but must satisfy themselves by inspection or otherwise as to their accuracy. No person in this firm's employment has the authority to make or give any representation or warranty in respect of the property.