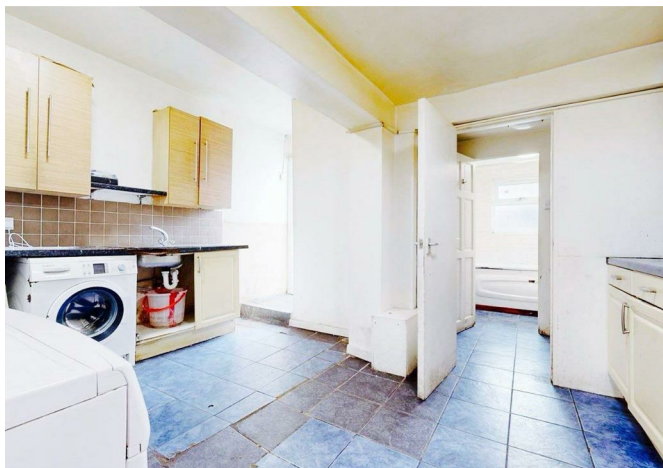


Davis Street, London, E13 9EE

**£475,000**





Davis Street, London, E13 9EE

£475,000

Barrain London Estate Agents is pleased to introduce this Victorian terrace home with a rear garden. No onward chain! Features include 3 double bedrooms, and an extendable loft. The new owners will appreciate they will be very convenient to shopping, banking, and restaurants in nearby Green Street. Plaistow and Upton Park stations, both a 12 minute walk, provides fast (District, Circle and Hammersmith & City line) underground connections across London.

Great area for kids, too, with several well performing primary and secondary schools including outstanding Brampton Primary, South Road Primary, and Lister Community School. Pretty Plaistow Park is just a short walk, great for kids to play in, pushing prams, walking pets or jogging. Other nearby points of interest include Newham University Hospital, and UKIM Masjid Ibrahim & Islamic Centre.

Very reasonably priced, with potential to extend, this will be of interest to first time buyers, investors and families with commuters!



## Key Features

- 3 bedroom end of terrace home on quiet residential street
- Rear garden
- 12 minute walk to District, Circle, and Hammersmith&City underground lines
- Excellent local junior and secondary school options
- UKIM Masjid Ibrahim and Islamic Centre
- Paistow Park
- Extendable to rear and loft

## Situation

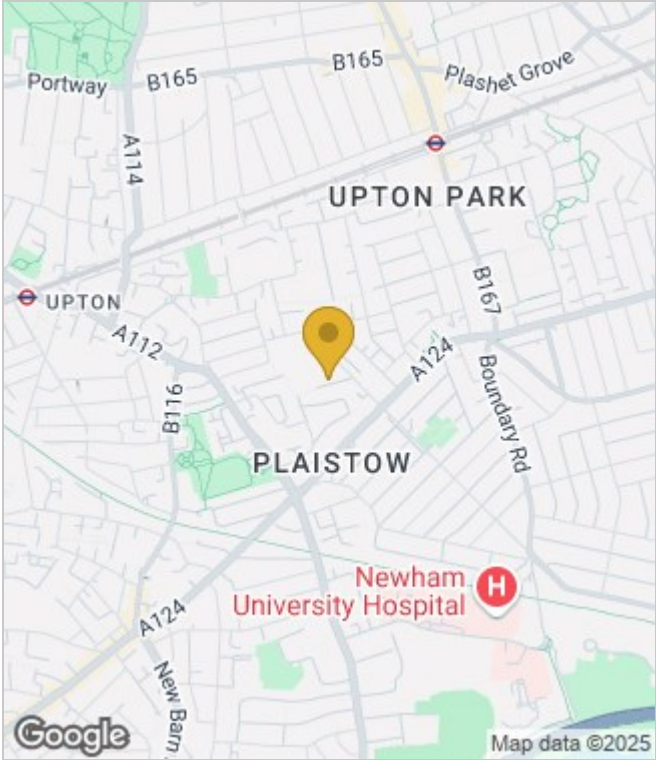


Council Tax Band: C

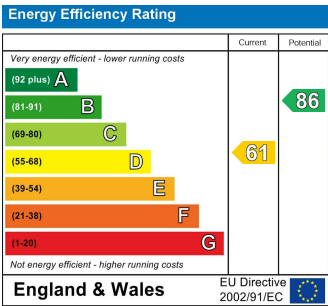
Floor Plans



Area Map



Energy Performance Graph



These particulars, whilst believed to be accurate are set out as a general outline only for guidance and do not constitute any part of an offer or contract. Intending purchasers should not rely on them as statements of representation of fact, but must satisfy themselves by inspection or otherwise as to their accuracy. No person in this firms employment has the authority to make or give any representation or warranty in respect of the property.