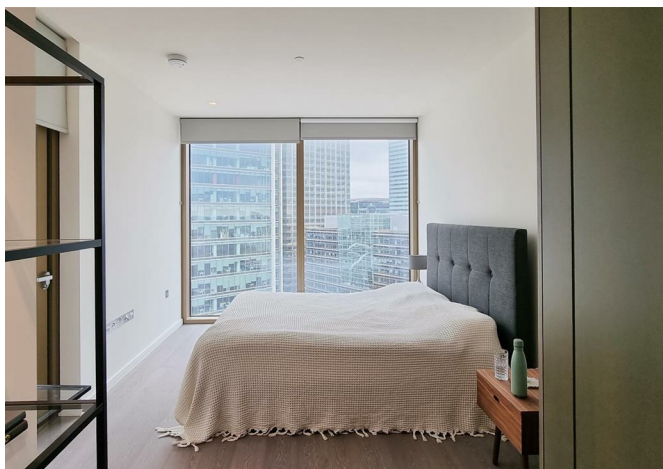




1 Park Drive, London, E14 9GG

£4,000 Per month



1 Park Drive, London, E14 9GG

£4,000 Per month

Short Let - Barrain London are delighted to present this stunning one bedroom, one bathroom apartment in the ever popular One Park Drive Development, (Canary Wharf). Offering luxurious resident's gym/spa, swimming pool, private cinema, resident rooftop lounge & terrace, secure 24 hour concierge. The property offers easy access into the City via DLR or Jubilee Line.

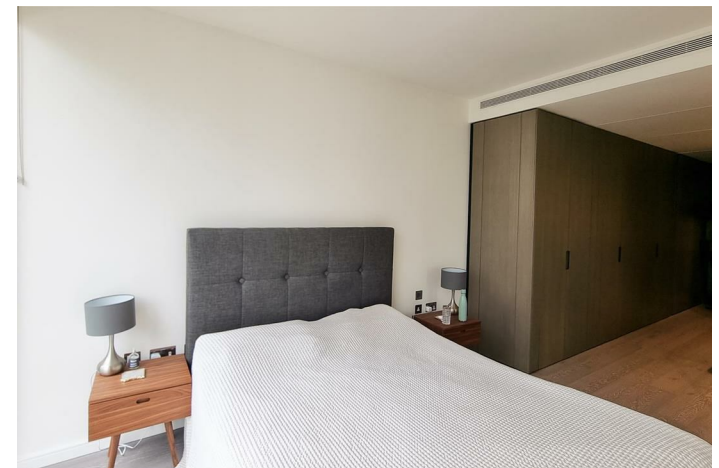
One Park Drive is conveniently located in Canary Wharf, next to the river Thames, offering rich history and a flourishing mixture of boutique shops and restaurants alongside easy access into the City centre & the West End. Walking distance to South Quay DLR station & Jubilee Line (Underground)

Description

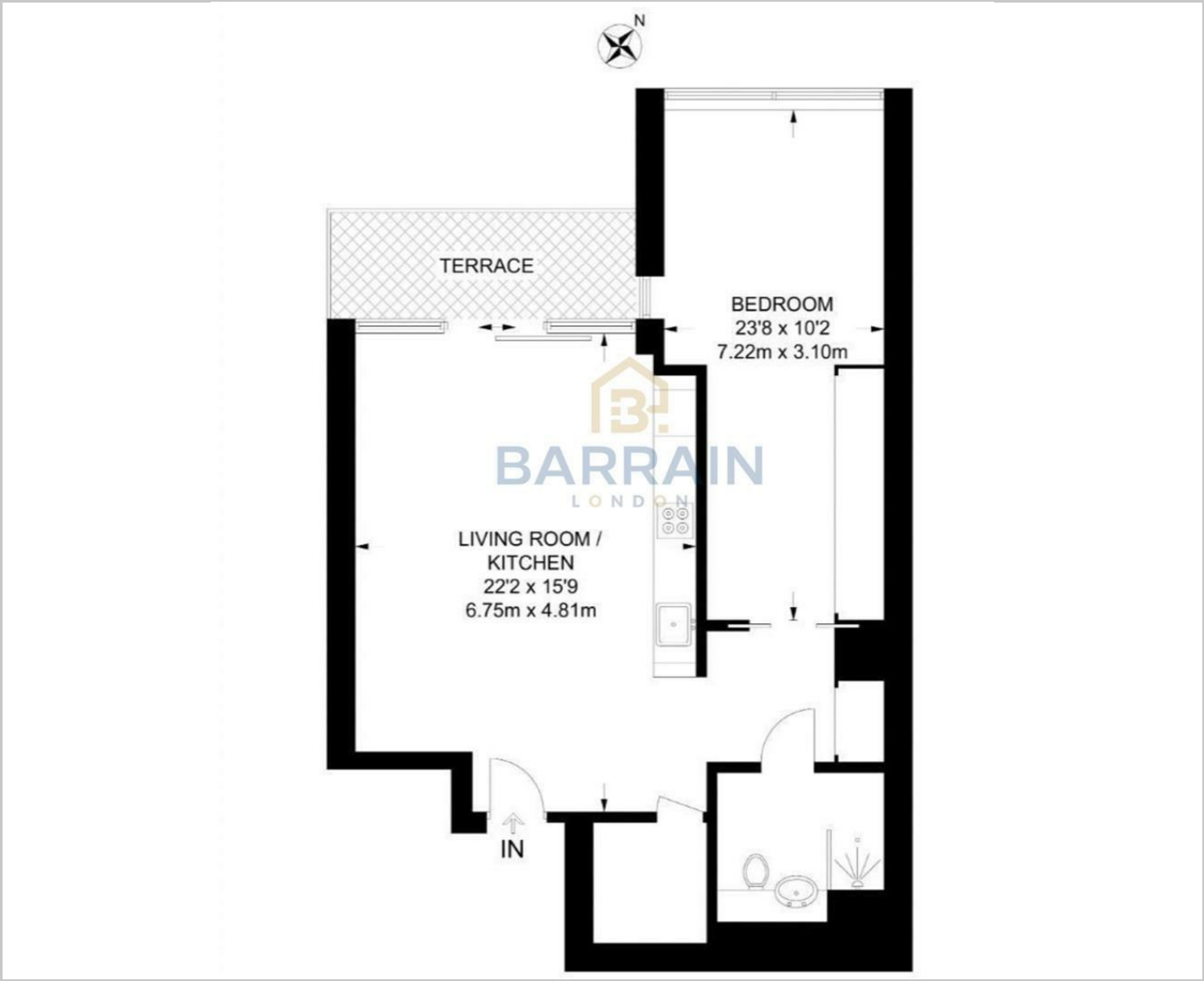
Situation



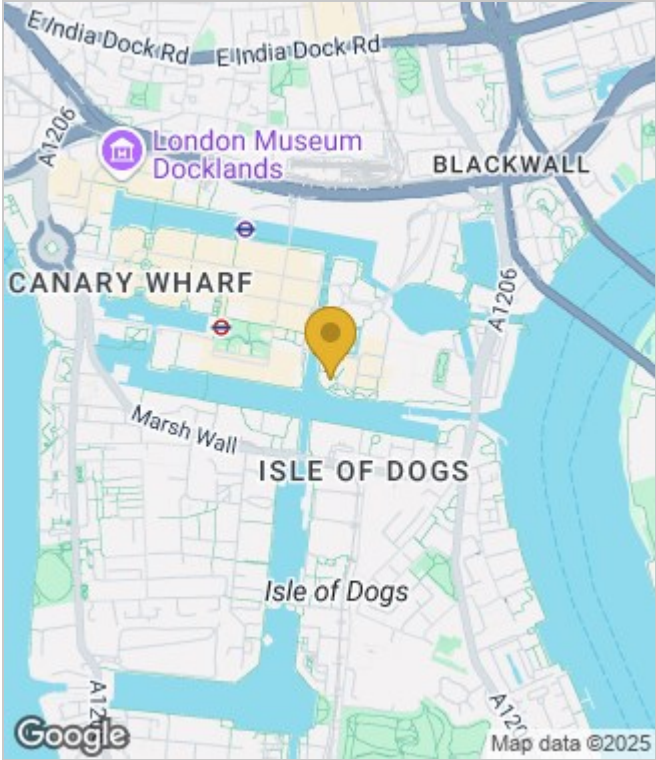
Furnished
Council Tax Band: E
Available: 11th February 2025



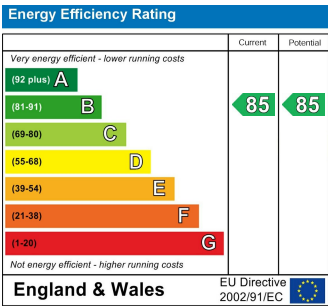
Floor Plans



Area Map



Energy Performance Graph



These particulars, whilst believed to be accurate are set out as a general outline only for guidance and do not constitute any part of an offer or contract. Intending purchasers should not rely on them as statements of representation of fact, but must satisfy themselves by inspection or otherwise as to their accuracy. No person in this firms employment has the authority to make or give any representation or warranty in respect of the property.