



Yarrow Crescent, London, E6 5UH

**£700,000**



## Yarrow Crescent, London, E6 5UH

£700,000

This very spacious 6 bedroom home with integrated carport is now available in Beckton. Featuring a conservatory extension, 2 bathrooms, a ground floor WC/utility room and a generous garden with an overlooking deck, this is an ideal home for a big family. Of course, some of the ample sleeping space can be easily repurposed as additional living accommodation depending on your needs.

A convenient modern lifestyle is assured! Your new home is located on a quiet crescent a short walk to LIDL and ASDA and with quick access to the rest of London: Beckton DLR is 0.6 miles away providing a fast connection Custom House Station (Jubilee and Elizabeth Lines). Canary Wharf is 23 minutes, Bank is 32 minutes, & Baker Street is 45 minutes. Included, also, is a brilliant education offer! All local primary and secondary schools are rated outstanding or good: Ellen Wilkinson Primary School and Brampton Manor Academy are less a 10 minute walk from your front door.

Families with children, multi-generational families, commuters and HMO investors! Call now to arrange your viewing!

## Key Features

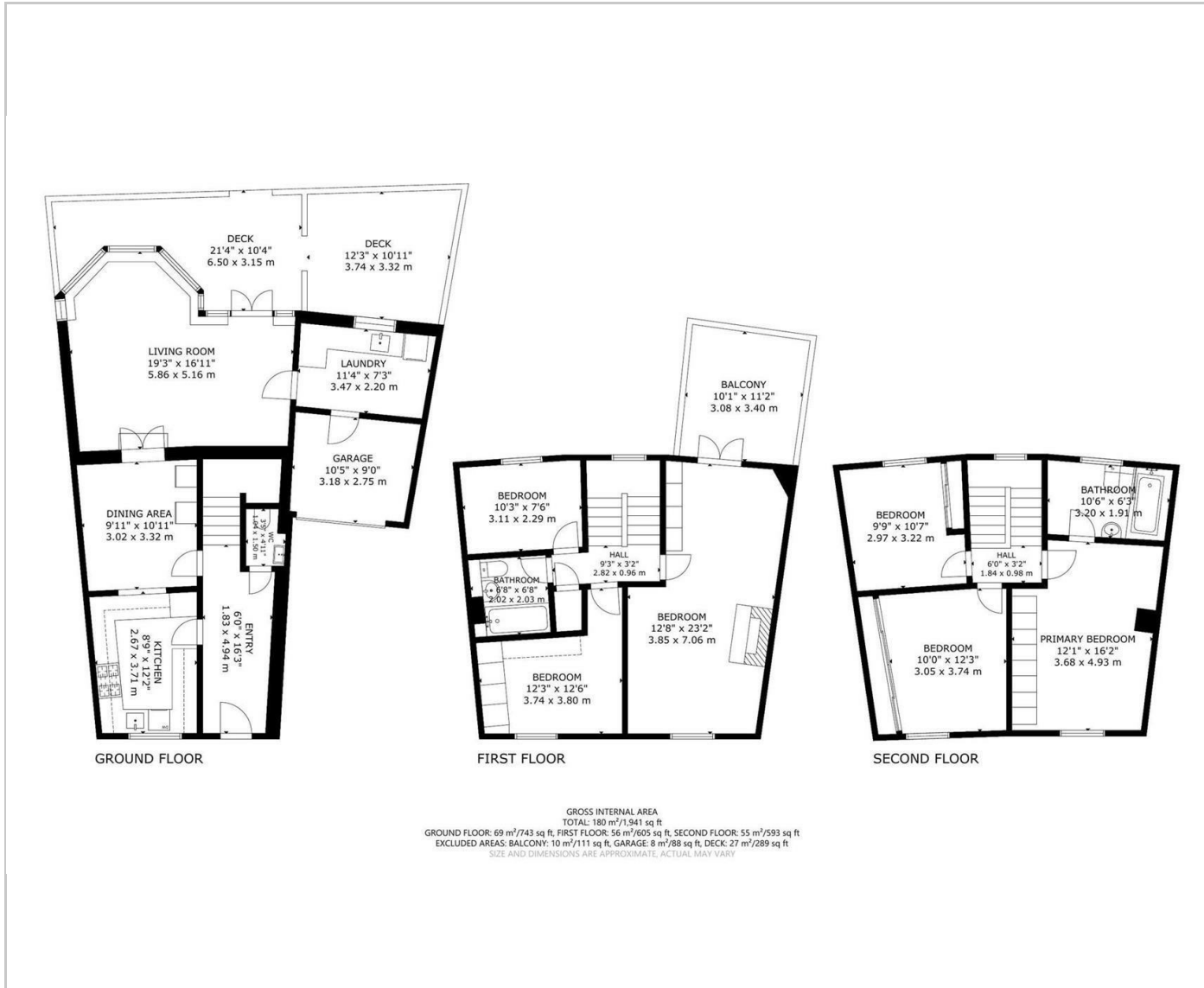
- Six bedroom residence with car port in excellent condition located on quiet crescent
- Conservatory rear extension and large garden with deck.
- Quick access to DLR, Jubilee and Elizabeth lines
- Excellent local junior and secondary schools
- A few minutes walk to LIDL and ASDA
- Close to pretty Beckton Park
- Excellent road links:

## Situation

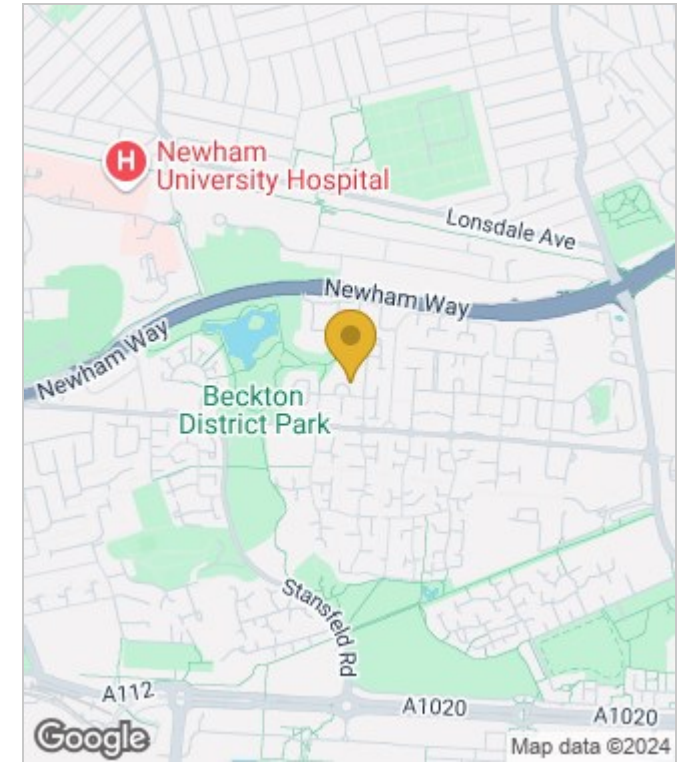


Council Tax Band: E

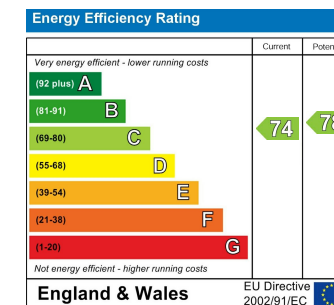
## Floor Plans



## Area Map



## Energy Performance Graph



These particulars, whilst believed to be accurate are set out as a general outline only for guidance and do not constitute any part of an offer or contract. Intending purchasers should not rely on them as statements of representation of fact, but must satisfy themselves by inspection or otherwise as to their accuracy. No person in this firm's employment has the authority to make or give any representation or warranty in respect of the property.