



Lyndhurst Rise, Chigwell, IG7 5BA

£1,475,000



Lyndhurst Rise, Chigwell, IG7 5BA

£1,475,000

Large detached residence in a premium Chigwell neighbourhood now available! Double-fronted with a double garage and featuring 4 double bedrooms, two bathrooms, a very spacious kitchen and an enormous double reception, this residence is exceptional option for a large family looking for green and pleasant suburban surroundings.

PLANNING GRANTED: This property also has huge re-development potential for interested investors: planning permission is granted for 2 semi-detached 4 bedroom homes on this plot.

Located in a neighbourhood both exclusive and convenient, Lyndhurst Rise also has exceptional Junior and Secondary schools close-by, including the Chigwell School. Commuting is a breeze with Chigwell Central Line station just a 5 minute walk, and Liverpool Street station a quick 35 minutes from there. Hainault Forest County Park, Chigwell Gold Club and Woolston Manor Country Club are near for those who enjoy outdoor activities.

This is a great opportunity for both home owners and investors alike!

Key Features

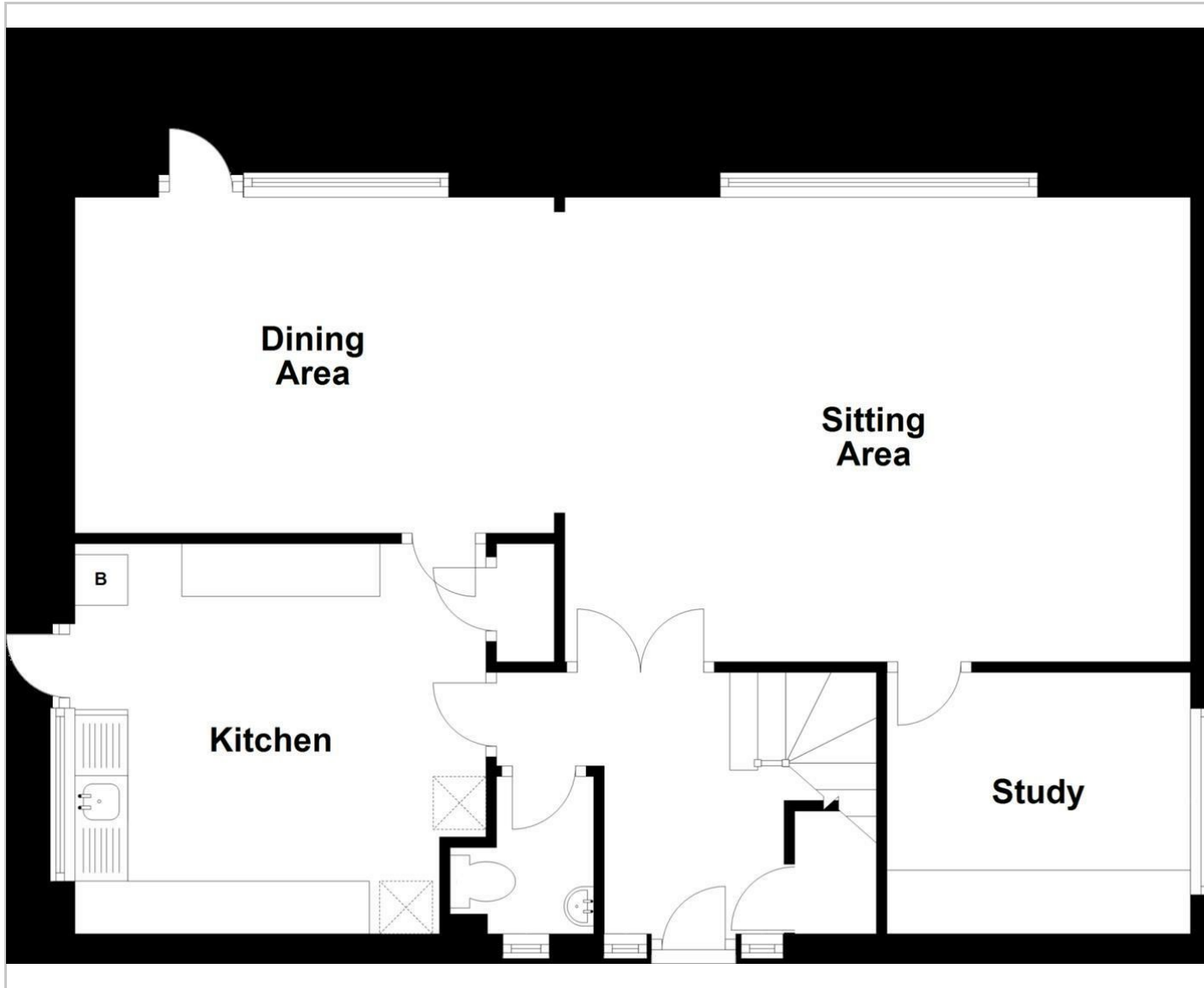
- Large detached 4 bedroom house in premium Chigwell neighbourhood
- 5 minute walk to Central Line station; 35 minutes to Liverpool Street station
- Double garage and drive
- Investors: planning granted for 2 x 4 bedroom semi-detached homes
- Chigwell Gold Club, Woolston Manor Country Club and Hainault Forest County Park
- Chigwell School

Situation

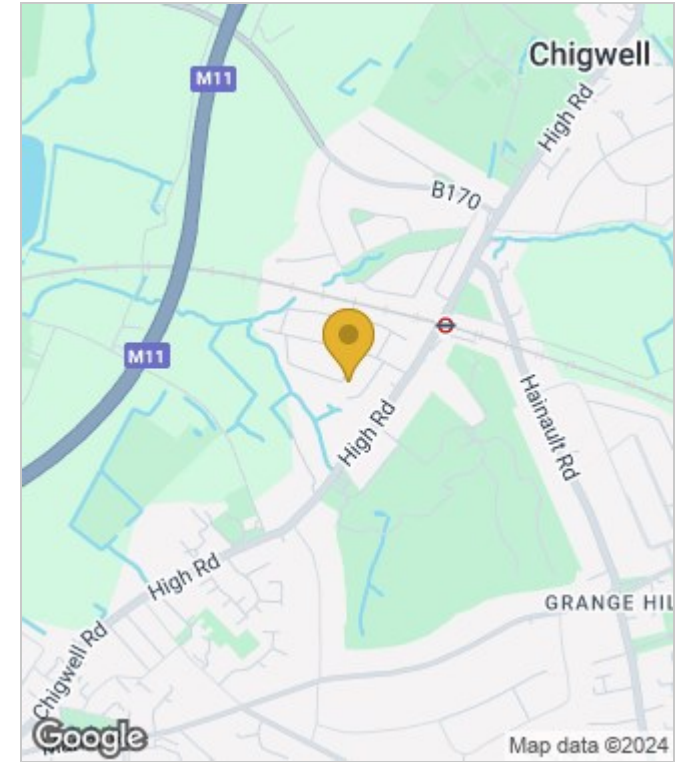


Council Tax Band:

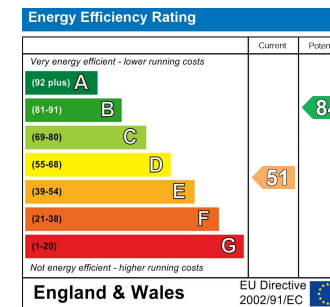
Floor Plans



Area Map



Energy Performance Graph



These particulars, whilst believed to be accurate are set out as a general outline only for guidance and do not constitute any part of an offer or contract. Intending purchasers should not rely on them as statements of representation of fact, but must satisfy themselves by inspection or otherwise as to their accuracy. No person in this firm's employment has the authority to make or give any representation or warranty in respect of the property.