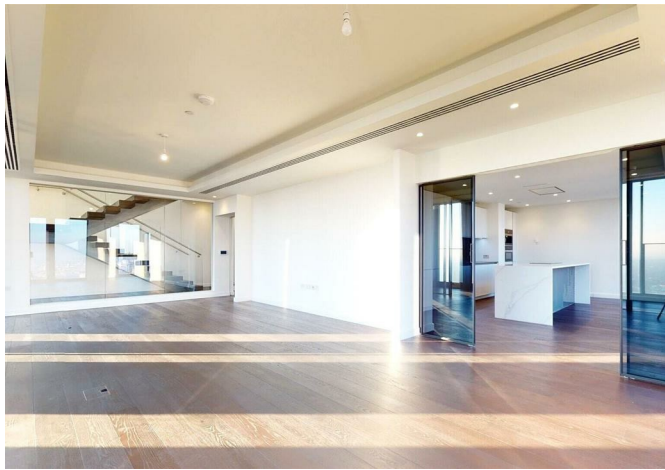
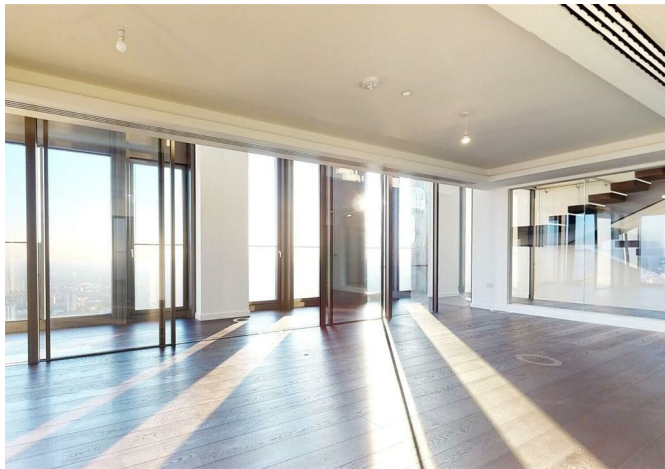




67 Bondway, London, SW8 1GQ

**Guide price £9,600,000**





67 Bondway, London, SW8 1GQ

Guide price £9,600,000

Penthouse - Rising 50 storeys, the ultra-modern DAMAC Tower Nine Elms, London will stand out as a new icon on the city skyline.

Located in Nine Elms, the property benefits from the new Battersea Power Station amenities and the new Northern Line station at Nine Elms along with Vauxhall transport hub on your doorstep.

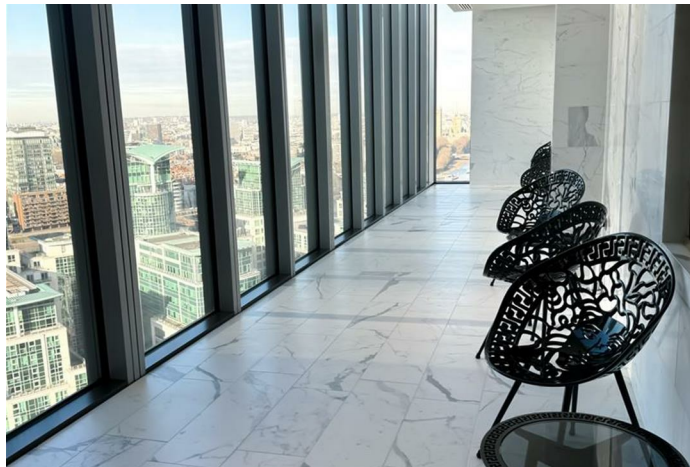
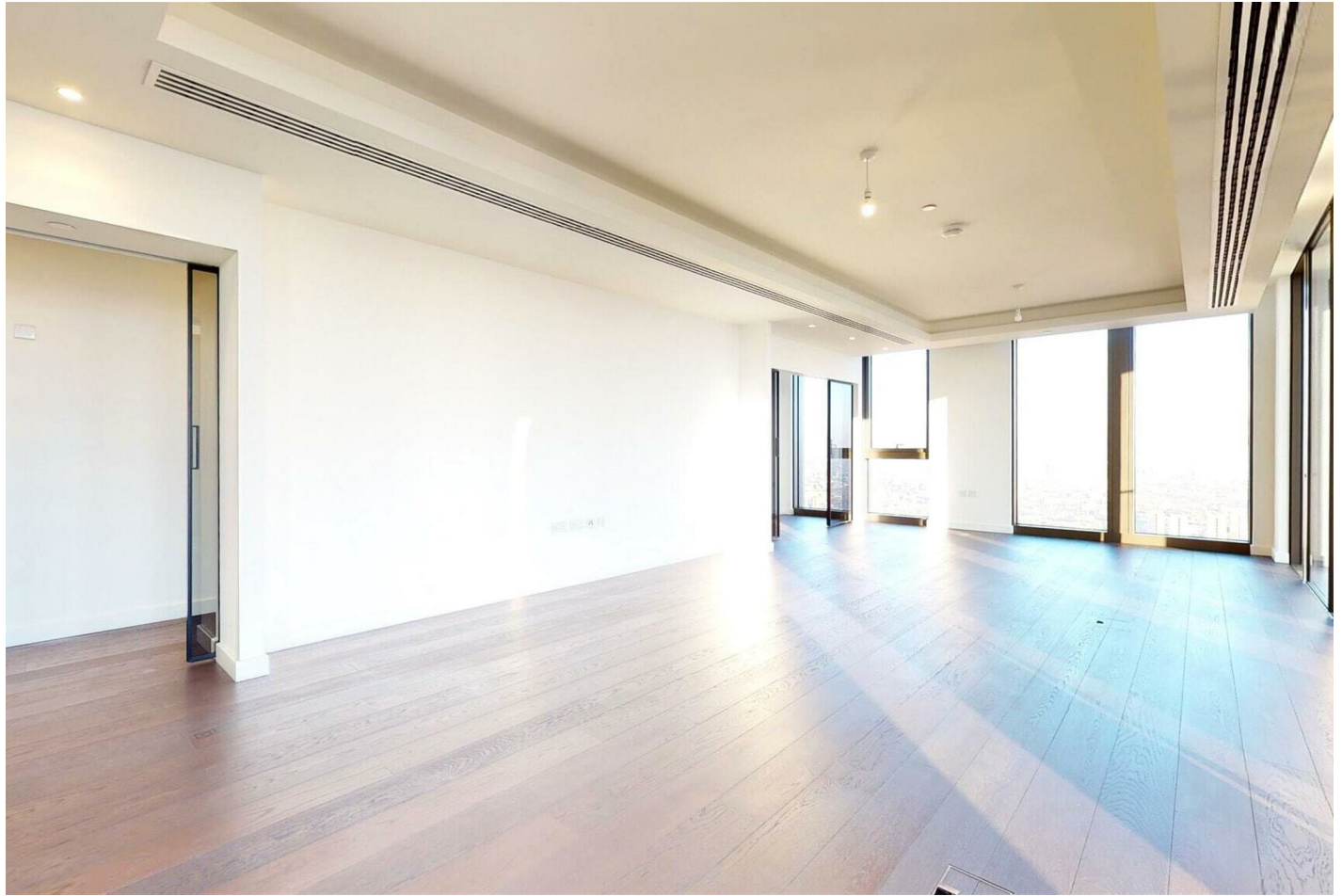
Damac Tower enjoys amazing facilities include 24/7 concierge, an indoor swimming pool and Jacuzzi, a gym, a private cinema, a residents' lounge on the 24th floor, and a roof garden with panoramic London views. .



## Key Features

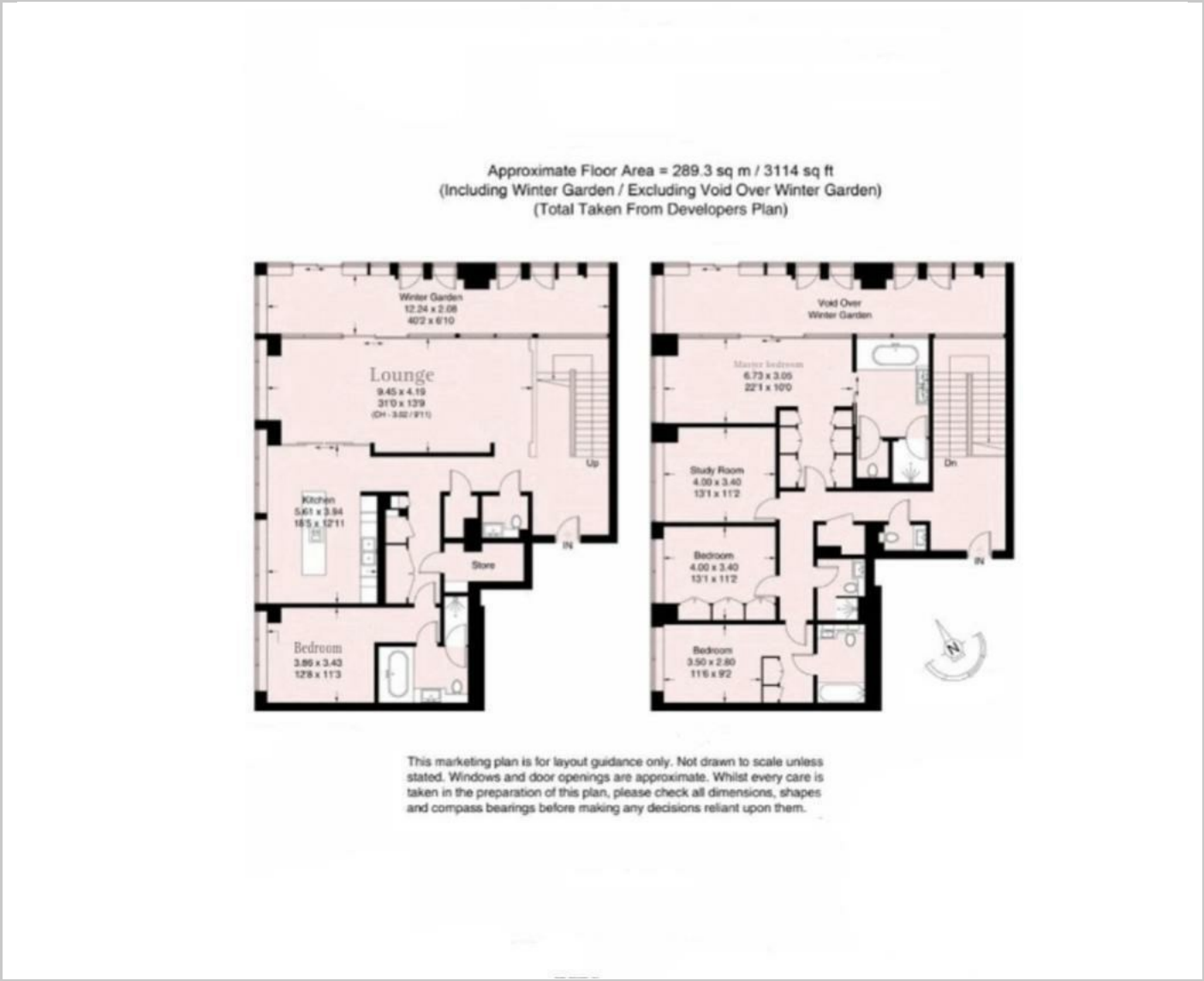
- Luxury Penthouse
- Versace Interior Design
- Panoramic London Views
- Winter Garden
- 24/7 Concierge, Spa and Gym
- Private Cinema
- Communal Roof Garden
- Excellent City Centre Zone 1 Location Close to Nine Elms & Vauxhall
- Valet Parking
- Secure Bicycle Space

## Situation

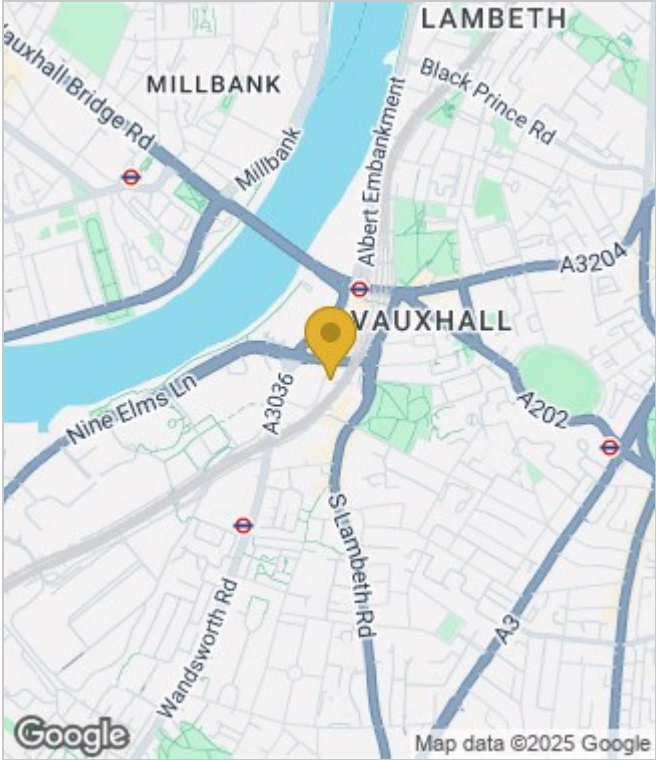


Council Tax Band: New Build

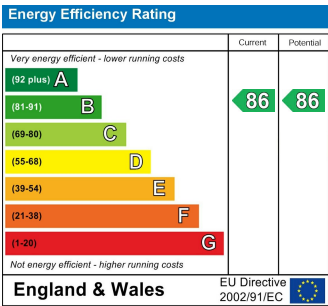
Floor Plans



Area Map



Energy Performance Graph



These particulars, whilst believed to be accurate are set out as a general outline only for guidance and do not constitute any part of an offer or contract. Intending purchasers should not rely on them as statements of representation of fact, but must satisfy themselves by inspection or otherwise as to their accuracy. No person in this firms employment has the authority to make or give any representation or warranty in respect of the property.